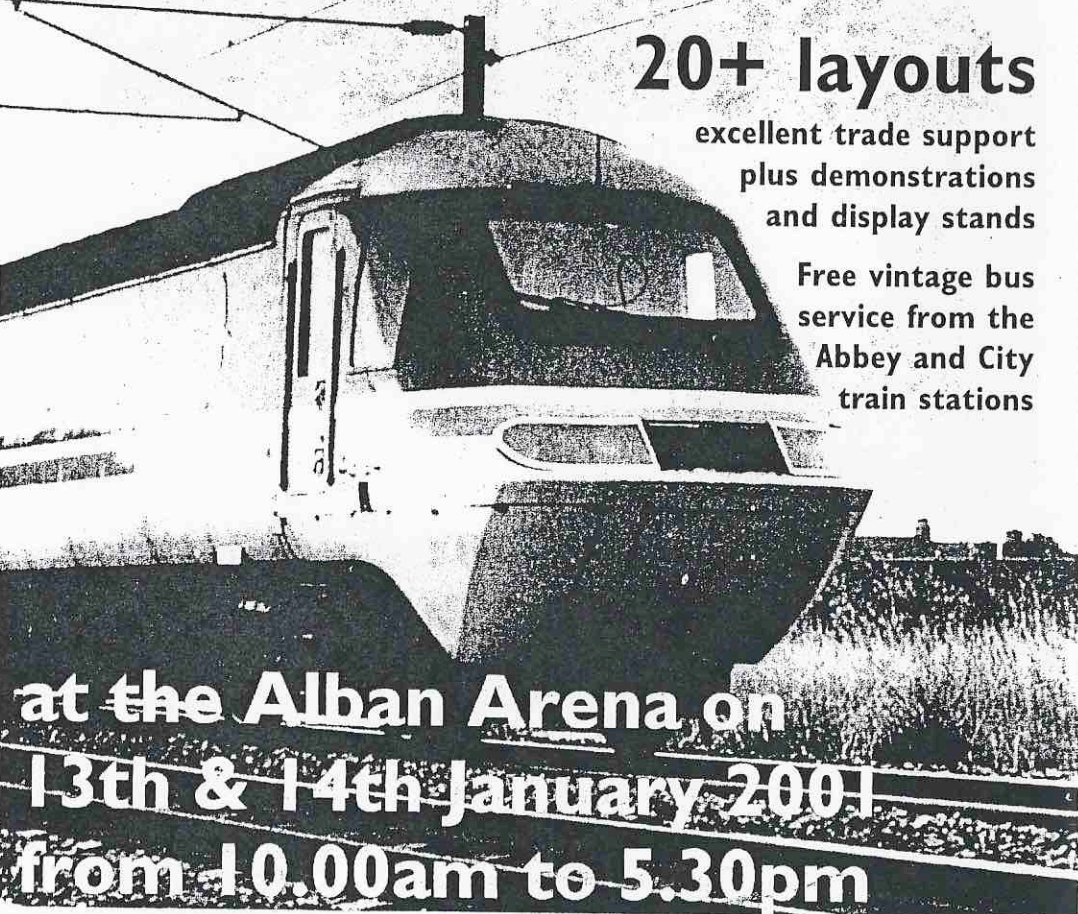


St Albans Model Railway Exhibition

20+ layouts

excellent trade support
plus demonstrations
and display stands

Free vintage bus
service from the
Abbey and City
train stations



**at the Alban Arena on
13th & 14th January 2001
from 10.00am to 5.30pm**

Adults £4⁹⁹

Concessions £3 ~ Children £2

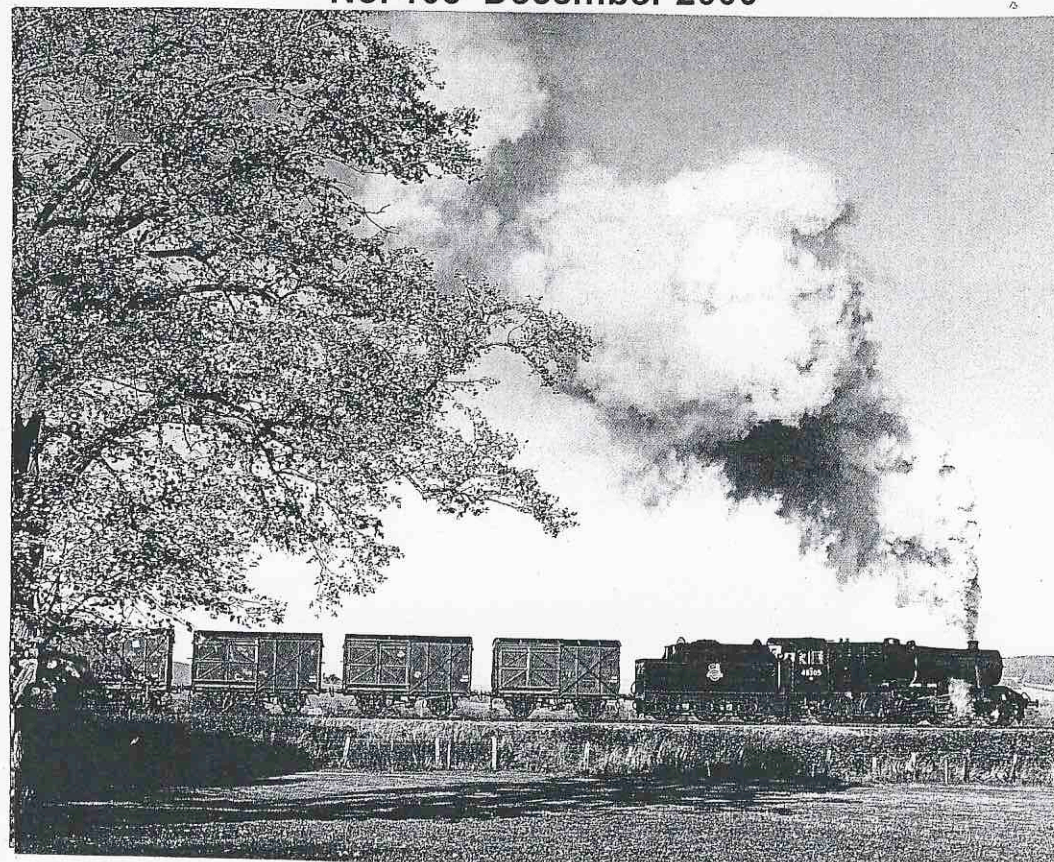
Family tickets (2 + 4) £10

Tickets at the door or from the Box Office
from 11th December - 01727 844488

Managed by St Albans Leisure on behalf of the City and District of St Albans



No. 105 December 2000

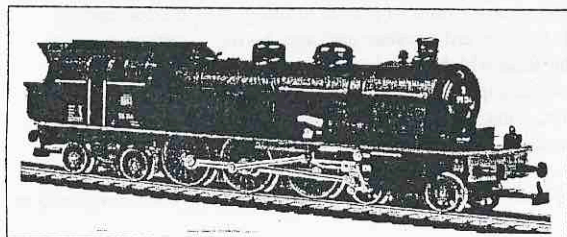


The MKMRS is associated with:
The Chiltern Model Railway Association - The Model Railway Club
The World War II Railway Study Group

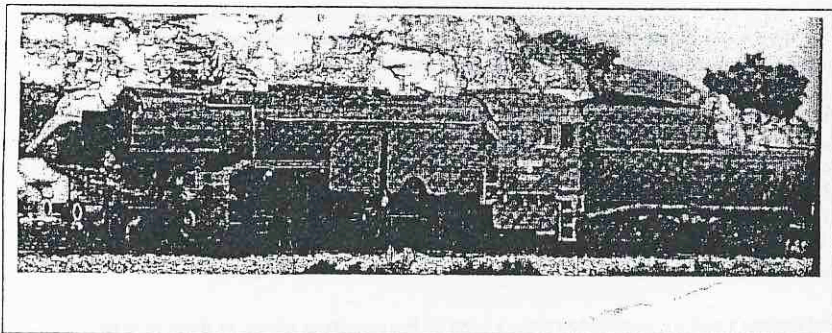
Working within the Bletchley Park Museum

Germany during 1993. A newly established sales office was set up in Nuremberg, at the heart of the German toy and model railway manufacturing industry, a number of other model railway manufacturers having a long association with the city. A new warehousing facility was established at Furth in Germany. Bachmann's policy of researching, designing and developing new models for the British OO range at Barwell was successfully recreated at Furth to cater for the HO European market and the German Class 62 4-6-4T locomotive was the first new model to emerge under Bachmann ownership.

Bachmann's influence on Liliput has been considerable and in 1998, it was necessary to transfer warehousing from Furth to larger premises at Altdorf. In addition to despatching orders to Liliput dealers throughout Europe, the British and American ranges are also distributed to specialist stockists in mainland Europe. The British model railway traders selling Liliput are equally well served from Barwell.



Left a Liliput model from the 1970s and below one from the current catalogue in German War Time livery



MILTON KEYNES MODEL RAILWAY SOCIETY FOUNDED 1969

Local difficulties

There was a little concern recently within the clubroom as confusion set in regarding our accommodation within the Park complex. A number of groups are having to move into other buildings as Falconer House is scheduled for demolition – a position known for many years.

Thanks to hard work by our President and Secretary we were able to ascertain the exact position and have been reassured that we can continue to develop our facilities as before and remain within the current building and adjacent garden area.

I know that the rumours circulating were giving cause for concern and none of us relished the thought of having to undo 5 years work and transfer it elsewhere. The morale suffered for a week or so – I was delighted to find on my return from working in Belgium that smiles had returned to peoples faces and that work was again in full swing.

During the coming year there will be plenty to keep us entertained and I would like to thank all members for their support during the past year. We have achieved much and I am sure that we shall continue to fulfil our ambitions over the coming year.

I wish all members, friends of the club and fellow Bletchley Park workers a Merry Christmas and a Happy New Year.

Dennis Lovett
Chairman

IMPORTANT NOTICE

Bletchley Park will be closed over the Christmas Holidays from

Saturday 23 December

And will reopen on Tuesday 2 January

There will be no club nights between those two dates and the first club night of the new year will be on Tuesday 2 January

Club Notice Board

2001 Woughton Swapmeets

The Swapmeet will take place between 1100 – 1500 at Woughton Campus on:

4 February
13 May
16 October
4 December

Admission is £1 Adults, 80p concessions, children under 18 free

Gauge O Guild Auction -2001

The third auction will take place on Saturday 10 February 2001 at Bletchley Park. The last two have gone down particularly well and the event, after several years of decline in Central London, is now proving popular again. One of the features has been our ability to open up our facilities and keep the visitors entertained and out of the way of those organising the proceedings in the hall. Please book the date in your diary.

Historical Model Railway Society

The following meetings are open to MKMRS members free of charge (tea / coffee available at small fee). Meetings commence at 1930 and further details are available from Eric Bowman. Meetings below are in the MKMRS clubrooms.

28 February Reconstruction of Euston Station - Prior to electrification
25 April Bullied Locomotives of the Southern Railway

The HMRS also meets in **Bedford** (details available from Eric Bowman). The following subjects will be covered:

31 January "Fragile"- a review of parcels and perishable traffic

Bala was the result. Known as the KIVOLI centre to reflect the principal products then imported Kibri, Vollmer and Liliput, today only the retail side remains trading as Bala Model Railways.

Meanwhile back in Austria, in order to meet demand, Liliput expanded by setting up a number of other workshops around Vienna. By 1962, the workforce had expanded to 60 and all production was concentrated in one building in Vienna's 17th District.

In 1966, a new modern factory was opened at Kalvarienberggasse 22, also in Vienna's 17th District. Capacity again became a problem and in 1977, Liliput opened an additional production facility at Baden near Vienna. By now, Liliput was well established in Europe as a supplier of fine quality models, which received many, accolades and often "model of the year" trophies to go with them. The Rheingold coaches, introduced in 1971 set new standards in the production of model coaching stock, following the introduction of the first scale length coaches from any European manufacturer just a year previously.

By 1990, however, the company was struggling and eventually declared Bankrupt. Herpa Miniaturmodelle, the GERMAN manufacturer of plastic building kits, model road vehicles and miniature aircraft put forward a rescue package, taking over the company name and inheriting the tooling from which models were made. Herpa began life producing a range of accessories to support the model railway industry in Bavaria. When Herpa was taken over by RIWA, a manufacturer of photographic accessories in 1965, production moved to the Nuremberg area. Unfortunately the take-over of Liliput by Herpa, resulted in the closure of the Vienna factory in Kalvarienberggasse 22 and transfer of production to a new Herpa plant in Elsfield in Thuringia. The Baden plant continued to produce trains at this stage.

Herpa sold Liliput to Bachmann Industries Europe Ltd in 1992. This resulted in the closure of the Baden factory and the transfer of production to Bachmann's parent company, Kader Industries Ltd in Hong Kong (now China). Day to day responsibility for the operation in Europe was established under Graham Hubbard, Managing Director of Bachmann Industries Europe Limited, whose current portfolio covers British, European and American models in an ever expanding number of scales and gauges.

Amongst the tools shipped to Hong Kong were those for the former Trix / Liliput British LNER A4 pacific locomotive and the BRT 35-ton bulk grain wagon. These were subsequently heavily modified and upgraded before becoming part of the British Bachmann OO gauge range. The locomotive chassis was completely retooled to Bachmann standards before being allowed into the shops. Not all the former British Trix / Liliput factory moulds passed to Bachmann, the others had been acquired by Dapol back in 1988.

Bachmann sensibly needed to retain a base in Europe from which to distribute its products and to research new models for future production. Barwell in Leicestershire, which performs this function for the British OO range, was already well established and the decision was taken to concentrate these activities for the European HO range in

Famous Names: The Liliput Story

By Dennis Lovett

Liliput is today an integral part of Bachmann Industries, flying the flag for the Bachmann group in Europe and well known to followers of European railways in Britain. Like many companies in the model railway world, Liliput has a distinguished history and its products have been developed over the past 50 years, winning many trophies for its research and quality engineering. We are, therefore, taking the opportunity to outline the history of Liliput and introduce you to a range of exciting HO European models, which sit neatly alongside the British OO range with which we are all familiar.

Walter Bucherl formed Liliput in 1947 in the 4th District of Vienna in Austria with a workforce of six working from a small workshop. The following year, the company trading as Liliput produced its first toy trains, albeit made in wood and tin. Two years later in 1950, the first HO models in plastic were manufactured, from which today's models have evolved. The company, not surprisingly, initially produced models of Austrian and German prototypes.

The name Liliput was first brought to the attention of British railway modellers back in 1958 by Ernst Rozsa, an Austrian who had emigrated to Britain with his parents, nine years earlier. Ernst set up Miniature Construction Ltd in London and acted as British importers for the Liliput range. Miniature Construction introduced under the Liliput banner, an excellent model of the Class 81 (AL1) electric locomotive built for the electrification of the West Coast Main Line in 1960, assembling components supplied from Vienna. This was a 4mm scale OO gauge model produced to meet the needs of the British market. Production continued until Ernst joined Trix, one of the leading model railway producer's back in 1962 and he later became Managing Director, greatly improving the products that Trix offered at that time. Trix by 1962 were, however, lagging behind both Triang, Hornby - Dublo and the much cheaper Playcraft range, produced in France by Jouef. Ernst later used his contacts at Liliput to produce the tooling for a range of locomotives and wagons, which raised the profile of Trix. The former Liliput produced Class 81 locomotive tooling was purchased by Trix in 1964 and became the first 4mm scale Trix locomotive to be introduced (the others being in a compromise 3.8mm scale, roughly halfway between European HO and British OO). Amongst the models tooled and the components produced in the Liliput factory were a LNER A4 Class Pacific locomotive and a BRT 35 ton bulk grain wagon, the significance of which will be outlined later.

Despite the efforts of Ernst and the excellence of Liliput's involvement in the British Trix range, the Trix model railway items were withdrawn in 1972. By 1974, Ernst was free to mount a rescue operation for the model railway side of the business and set up Liliput UK to recommence production, again working with his contacts in the Vienna factory. The setting up of a production facility alongside a permanent exhibition and retail premises at

Club News Continued - HMRS Bedford Meetings

28 March Slides by Chris Youett (including new material on the Southern and London & North Eastern

30 May A modelling clinic (no appointment necessary!!)

NORTH NORFOLK RAILWAY ANNUAL EXHIBITION

The club has been invited to provide layouts again for the North Norfolk Railway exhibition to be held in the new carriage shed at Weybourne near Sheringham. Our Norfolk member Gordon Eckersley of GE Models is once again organising this event.

Anyone wishing to exhibit a layout at this event which is being held on Saturday 23 and Sunday 24 June should contact the Chairman a.s.a.p

MKMRS SWEATSHIRTS & POLO SHIRTS - AT LAST YEARS PRICES

Sweatshirts (Maroon with MKMRS logo)	£14.50
Polo shirts (Maroon with MKMRS logo)	£12.50

*Both can be personalised with your name for
£3 extra.

Please see Gordon Shrimpton

NORTHAMPTON INTERNATIONAL MODEL RAILWAY EXHIBITION

SATURDAY 3rd MARCH 2001

Moulton Secondary School, Pound Lane 20+ layouts
Adults £2 - Free car parking

Bletchley Park Roster

Please note: If you are unable to cover any particular date – please arrange a swap on the roster in the club room – Chris Hughes

UNROSTERED PEOPLE ARE WELCOME AT ANY TIME – THANKS

Saturday 6 January: Gordon Shrimpton / Tony Winn
Sunday 7 January: Chris Hughes / Nick Hughes

Saturday 20 January: Bruce Garwood / Ken Wiggins
Sunday 21 January: Dennis Lovett / Bernard Worden

Saturday 3 February: Chris Lester / Tim Davey
Sunday 4 February: Fred Collins / Roy Cobb

Saturday 17 February: Eric Bowman / Eric Preston
Sunday 18 February: Les Wood / Geoff Blackwell

Saturday 3 March: Brian Barnes / Stan Pennington / Mick Clements
Sunday 4 March: Chris Hughes / Nick Hughes

Saturday 17 March: Gordon Shrimpton / Ken Sharpe
Sunday 18 March: Bruce Garwood / Martin Shenton

Saturday 31 March: Chris Lester / Stephen Walker
Sunday 1 April: Dennis Lovett / Ted Mellor

Saturday 14 April: Eric Bowman / Paul Wakeley
Sunday 15 April: Fred Collins / Ken James
Monday 16 April: Easter Les Wood / Roger Blackburn / Ian Leigh

Saturday 28 April: Geoff Bell / Ray Cousins / Richard Cousins
Sunday 29 April: Chris Hughes / Nick Hughes

Saturday 12 May: Gordon Shrimpton / Geoff Blackwell
Sunday 13 May: Bruce Garwood / Ken Wiggins

Please note that John Hatton / John Tennant and Ken Ranns are not rostered as they attend most weekends.

NOTICE OF ANNUAL GENERAL MEETING

In accordance with the club rules, I hereby give advance notification of the 2001 Annual General Meeting of the Milton Keynes Model Railway Society which will be held on:

Tuesday 30th January 2001
Commencing at 2000, in the clubroom at Bletchley Park

Nomination forms for the appointment of club officers will be available from me in due course. These should be completed and handed to me before the start of the meeting on the date specified above.

Chris Hughes, Secretary
10 December 2000-12-17

CLUB COMPETITION

As usual the club modelling competition will be run in conjunction with the Annual General Meeting so now is the time to be completing your models.

The classes of competition are as follows;

7mm or above

Scratchbuilt locomotive
Kitbuilt or modified RTR loco
Scratchbuilt rolling stock
Kitbuilt or modified RTR rolling stock

4mm or less

Scratchbuilt locomotive
Kitbuilt or modified RTR loco
Scratchbuilt rolling stock
Kitbuilt or modified RTR rolling stock

2mm or less

Kitbuilt or modified RTR locomotive

Any scale

Scenic items

RULES

- 1 – NO ENTRY shall have been previously entered in a club competition
- 2 – The entry shall be made by a fully paid up member at the time of entry

The competition will be judged during the meeting and the prizes awarded afterwards