



MILTON KEYNES
MODEL RAILWAY SOCIETY
NEWS

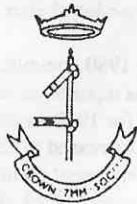
No. 12

MARCH 1993



Front & Back: GWR steam at Quanton Road in 1992

Published by Dennis Lovett, Chairman, Milton Keynes Model Railway Society
c/o 4 Browning Crescent, Bletchley, Milton Keynes MK3 5AU.
Telephone: 0908 376750.



Crown 7mm Society

Presents
In conjunction with the
Gauge One Development Society
The Fifth 'O' Gauge
Model Railway Convention

Saturday 5th June 1993

10.00 am to 5pm
at the
Bletchley Leisure Centre
Princes Way, Bletchley, Milton Keynes

Featuring: Bring & Buy Stall
A number of 'O' Gauge layouts and Gauge 1 layouts
Trade Stands, Test Track for Gauge 1
Modelling Demonstrations in both scales

Refreshments - Licensed Bar - Free Parking



MILTON KEYNES MODEL RAILWAY SOCIETY

The club was formed in 1969 and is an Associate Member of The Model Railway Club and a Member of The Chiltern Model Railway Association.

President:	Jim Wood	Secretary:	Chris Hughes	Committee:	Geoff Bell
Vice President:	Les Wood	Treasurer:	Gordon Etherington		Fred Collins
Chairman:	Dennis Lovett	CMRA Rep:	Eric Bowman		Colin Catley
Vice Chairman:	John Symons	Librarian:	Mark Wilson		Chris Garner

Some thoughts on building kits

After an absence of several years, I suddenly felt the urge to build a couple of 4mm wagon kits. Wagon building activity has been confined in recent years to 7mm kits, so the exercise proved interesting!

7mm kits tend to be more expensive than their 4mm counterparts. 7mm kits however, tend to come complete with wheels, transfers and couplings (not that I use them anyway!). 4mm kits tend to require the supplied wheels to be confined to the rubbish bin, along with the couplings which rarely look like any of the ready to run versions. After making these additional purchases the kit is beginning to close the price gap with the 7mm version.

One of my purchases was from a company who had entered the 7mm market in recent years. Although I had never built one of their 7mm new generation plastic kits, I opted for a 4mm version to see what it was like.

On returning home with my trusty purchase, I opened the packet. Horror! The mouldings were far from crisp. Cleaning up the parts was a lengthy process and building the basic van box took twice as long as building a complete 7mm kit! Then I fitted the floor only to find that it was 5mm too wide and 3mm too long. It was quite simply a potential disaster.

By now my enthusiasm was waning and I questioned my own judgement in trying to build a 4mm kit. Club Chairman are supposed to be impartial to scales, but I can assure you that this kit was enough to make anyone give up the hobby, let alone change scales!

I decided that I ought to try something else. I therefore went out and purchased products from Mr Dapol and Mr Ratio. Both had been around for years. The mouldings were crisp and the parts actually fitted together. The Dapol moulds were introduced by Airfix in the good old days of Kitmaster and Co. Despite being 30 years old they were a joy to work with. I wish my new generation, all dancing and singing kit manufacturers had hired a few of the old Airfix tool makers!

So having restored my faith and finished all three kits what did I learn? Firstly, the old kits were far better than the new. Secondly, the new manufacturers need to build some of their own kits - it was obvious that they hadn't. Finally with ready to run wagons at around half the price with Bachmann quality, the kit manufacturers need to keep looking over their shoulders if they wish to survive.

Dennis Lovett
Chairman



Club Diary

23 February - Illustrated talk "St. Pancras to Bedford through the years". - Gordon Eckersley.

30 March - Illustrated talk "World Steam" by Mike Hedderley.

Gauge O Guild Spring Convention

The Gauge O Guild is holding its Spring Convention at Bletchley Leisure Centre on Saturday 27 March. Volunteers for catering and stewarding urgently needed please.

Exhibition Diary

27/28 Feb - Twickenham, Richmond
6 Mar - Chesham
13/14 Mar - St Neots
13/14 Mar - Epsom & Ewell
20 Mar - Slough
27 Mar - Norwich
27 Mar - Abingdon
27/28 Mar - Ilford

HMRS

The Historical Model Railway Society will be meeting at our club room on Wednesday 24 February commencing at 7.30pm. The speaker will be Gerry Arundel who will talk on "4mm finescale modelling". MKMRS club members are welcome to attend.

Club Quiz Night

Thanks to Colin Catley for organising our traditional Christmas evening of fun and frustration. He was ably assisted by our Secretary, Chris Hughes who kept the scores (and the teams) in order. Seven teams of three took part and the final results were;

1st - Les Wood, Chris Garner, Dennis Lovett - 89 points.
2nd - Geoff Bell, Colin Jamieson, Mark Wilson - 83.5 points.
3rd - Eric Bowman, Gordon Etherington, Phil Gilbert - 80.5 points.

It was a very close contest with Gordon Etherington's team leading for most of the competition. The eventual winners trailed them for most of the evening by the odd point and Geoff Bell's team put in a spurt to finish in runners-up spot. The scores were not over important - the evening was after all only a fun contest!

ExpoEm

ExpoEm is being held at Bletchley Leisure Centre over the weekend of 15/16 May. There is no official MKMRS involvement.

exhibited Rewley Road which had made a comeback following extensive refurbishment. All layouts were well recorded in the railway press of the time.

Our own Verney Junction made its debut, but the least said about that the better! Still it looked good, even if the running was somewhat restricted! It should be mentioned that the scenery was only started a fortnight before the exhibition. It kept us fairly busy for a couple of days (and nights)!!

Club members produced the following layouts; Chris Holmes (Stoke Goldington Light Railway - 0/16.5), Jarvis Family (Farmyard & Rabbitmarch - 009), Chris Avis (Hazzard County RailRoad - American N), Trevor Nunn (Wicken - S Gauge) and Colin French (Burnham-on-Sea - OO).

Other layouts included the large scale trams from Luton, Alderstone (Brian Golding our former Vice-Chairman - TT), Buntingham (Ray Hammond - S4), Brookhurst (Nigel Adams/Leamington & Warwick MRS- OO), Mansfield Park (J Hutchinson - OO) and Worksop (P Young/Marlow & Maidenhead MRC (OO Modern image).

The guide was the first to be edited by your current Chairman and included historical local pictures for the first time. The adverts included several for long since forgotten model shops including Bryan Scale Models (Bedford), MK Model Railways (Leighton Buzzard), Neals (Bletchley), Wolverton Models & Hobbies (Wolverton) and Ladymans (Winslow).

At the December committee meeting, the treasurer reported a favourable result from the exhibition. Looking to future layouts, Les Wood had acquired the plans for Winslow for

the proposed N Gauge Layout. This project was subsequently abandoned after a few years.

At the January 1980 committee meeting, the upstairs area was reported as being in need of decorating. Subs for 1980 would be put to the AGM for being increased to £6. The committee discussed a document on the clubs future. There was a need to look after new members better and visitors generally. Four committee members had talked to the local Festiniog Railway Group on model railways,

The 1980 AGM was held at the club room on 29 January. After the Chairmans report, the Treasurer in presenting his report outlined the need to increase subscriptions. A general discussion followed. Chris Holmes recommended a weekly attendance fee, whilst George Barratt suggested raising the fee to £8. The Chairman welcomed enthusiasm from the floor for improving our financial position, but felt that the committee proposal was all that was needed. It was put to the vote and passed. The President (Jim Wood) thanked the committee for its hard work and thanked retiring members Mike Knowles, Eric Bowman and Don Hilton who were stepping down due to their Leighton Buzzard commitments. In the elections which followed, Gordon Shrimpton and Tony Hill were re-elected, Terry Scott returned after a two year absence and Geoff Bell and Fred Collins were still level after two rounds of voting. The President suggested that both should be elected and they were! They have both served on the committee since. Chris Holmes became CMRA Rep.

Competition results were; Scratchbuilt loco - Jim Wood, Kitbuilt loco - Gordon Etherington, Kitbuilt rolling stock - Dennis Lovett, Scratchbuilt scenic/kitbuilt scenic - Chris Holmes.

To be continued



In the beginning (Part 10)

At the July 1979 committee meeting, Mike Knowles reported on the meeting that had been held at his home to establish the possibilities of forming a club in Leighton Buzzard. Over 40 prospective members attended and considerable overcrowding was experienced in Mike's lounge! As a result of this meeting, it had been decided to form a club with Mike Knowles as Chairman, Eric Bowman as Secretary and Don Hilton as Treasurer. Mike agreed to make a statement at the QGM and the three MKMRS committee members agreed to remain on active MKMRS service at least until the AGM. Eric has recently told the story of the club in News and remained active in MKMRS throughout. Our President Jim Wood, wished the new club every success and offered them some friendly advice gained from our own starting up.

At the QGM, it was Eric Bowman who informed the membership of the Leighton Buzzard developments. There was little to report otherwise. The Chairman (Les Wood) outlined Exhibition proposals. Admission would be 30p Adult, 15p for children. Family tickets cost 75p! How times (and prices) change!!

To enable work to proceed on Verney Junction before the exhibition, the committee agreed to postpone the planned speakers for August and September and to rearrange the dates for after the exhibition. Don Pigott was congratulated for his efforts on the scenic front and for the excellent station buildings in particular.

At the September committee meeting, Mike Knowles and Don Hilton declared an

interest in a new model business MK Model Railways. Initially trading from Mikes house in Leighton Buzzard, the firm negotiated a shop in Dunstable but unfortunately went out of business after a couple of years. The Chairman also welcomed our first ever lady member - Jane Etherington (Gordon's daughter).

The club organised a trip to Pendon Museum and The Great Western Society at Didcot on September 30th. This was organised by Gordon Etherington and was a great success. The turnout (from actual members) was disappointing.

The October committee meeting was reminded by the Chairman that unless the exhibition was a success financially, the clubs hard work would be wasted and we would be forced to return to Holne Chase. The message was obviously heeded!

Terry Scott attended the Beaconsfield exhibition on 6 October. The October committee minutes record that Terry's layout ran well, but that the catering provided by the host club was unacceptable.

The 1979 Exhibition was held at Bletchley Leisure Centre on Saturday 10 November.

Some of the finest layouts ever attracted to Milton Keynes appeared that year. Barnet MRC were persuaded to exhibit their famous Peterborough North (OO) layout outside Barnet for the first (and I believe the only) time. It lined up alongside the Model Railway Club's Chiltern Green layout (2mm/N) and Bishops Hemingway (7mm). Oxford MRC



Swapmeet

The Milton Keynes Swapmeet will be held on Sunday 14 February from 1100 - 1530 at Woughton Centre, Rainbow Drive, Leadenhall. Admission is 60p Adult, 30p for children and Senior Citizens.

Abingdons new shop

Geoff Osborn has left The Oxford Model & Book Centre at Headington, Oxford after being manager there for several years. Geoff was an enthusiastic supporter of the MKMRS exhibition and could be found in his favoured corner, selling books at great speed.

Geoff has now branched out on his own and has recently opened a new shop at Edward Street (Geoff Osborn's Railway & Model Shop), Abingdon. Telephone 0235 - 522700. He will be delighted to meet you when passing Abingdon way!

7mm on the Rails

Jeff King, the former owner of a West Midlands Model Railway shop, moved to Milton Keynes a few years ago and has built up a thriving mail order business specialising in kits and bits in both 7mm and more recently 4mm.

In partnership with Rails, 21 St. Marys Avenue, Bletchley, a good selection of 7mm kits etc. are now available on a retail basis at very competitive prices. Rails now stock extensive supplies of 7mm products from all the leading manufacturers including Parkside Dundas, Peco, Slaters, Oakville etc.

In addition to the new retail agreement, Jeff King Models will continue to operate a mail order service from Heelands and will also attend exhibitions.

7mm modellers will be welcomed at Rails and for the first time can benefit from having a local stockist with specialist O scale products.

STOP PRESS - AGM Rule Changes

At the AGM on 26 January, two rule changes took place and the meeting was informed that it will also be necessary to amend rule 28 once we are able to obtain the correct information from our insurers.

This will be done at the QGM in April.

Rule 14 now allows the Chiltern Model Railway Association Representative voting rights at MKMRS Committee meetings.

A new rule has been introduced as 28a. It reads;

Any trading or service provision between individual club members contracted on Society premises or elsewhere shall be the sole responsibility of the members concerned and in no way shall the Society be implicated.

Profile Geoff Bell (MKMRS Committee)

Geoff Bell's association with model railways started when his aunt bought him a Triang 00 train set with Series 3 track. Geoff can remember little about it except he drew the curtains and turned out the lights in order to take full advantage of the headlight on the Dock Authority diesel shunter. Born in Enfield, Geoff attended Chase School, which over the years did much to further the cause of railway modelling in the borough. Geoff never managed to get into the model railway club, but he did manage a fortnight on the Festiniog Railway with one of the school trips when he was 15, and remembers concreting sections of Boston Lodge Works under the watchful eye of school teacher Keith Catchpole.

Geoff sold his layout to his brother when he became more interested in motorbikes and girls. His brother built up the layout in the loft of the family home and recently during a trip to visit his parents, Geoff managed to salvage some items from the loft that had survived over the years. His brother is still active in the hobby although he now prefers Hornby tinplate in O gauge.

Geoff moved to Milton Keynes in 1973 and visited some of our shows. He recalls standing in front of Verney Junction at our 1979 exhibition (not one of our better moments - Ed.) and watching Eric Bowman scraping the ballast away so that trains could creep further along the tracks. He joined MKMRS shortly afterwards and a few months later found himself elected to the committee, which must be some sort of record! Apart from a years break in the mid 1980's he has served on the committee ever since.

Geoff began to build up a collection of ready to run items from the GWR and LMS in OO. He attended many exhibitions with both the O gauge layout and Verney but gradually found the O gauge models more enjoyable. He acquired the 4mm layout Watlington from near neighbour and one time club member Dave Fearn, which he still exhibits from time to time. Its next outing is in June when it attends the Shepton Mallet exhibition.

One of the excursions with the O gauge layout was to Geoff's old school at Chase for a CMRA exhibition. Geoff's contacts there came in useful when he spent the whole day repairing the trailer which had come to grief earlier in the day on a roundabout in St Albans!

Geoff joined the Gauge O Guild in 1988 and has recently been elected to serve as Chilterns Area Representative on the GOG Council.

Geoff began in O gauge by building Peco wagon kits before moving onto whitemetal and eventually etched brass kits. He has several locomotives under construction and is currently building a Siphon for a well known manufacturer, to test out any problems during construction, before it goes into production.

Wife Chris is an associate member of MKMRS and is now chief wagon builder, who looks forward to working on the scenery on the new club layout, for which Geoff is project leader. Both are keen on landscape gardening and welcome the prospect of putting their creative talents to good use.



SPRING CONVENTION **BLETCHLEY**

on: **SATURDAY 27th MARCH, 1993**
10.00 am to 5.00 pm

at: **BLETCHLEY LEISURE CENTRE**
BLETCHLEY

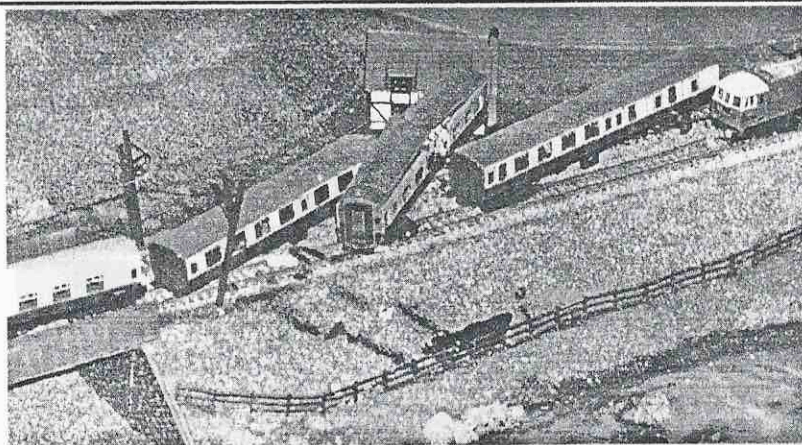
(FOLLOW LEISURE CENTRE SIGNPOSTS)

See: **LAYOUTS**
SPECIALIST TRADERS
BRING AND BUY STALL
REFRESHMENTS

More for the 7mm modeller!!

The first great project
- for instructing the emergency services
Photographs by Gordon Etherington

The photographs show the first project undertaken by the club after its formation in 1969. It was started in early 1970 and presented to the emergency services to be used as a visual aid in their training. It was completed in a few weeks and generated a lot of publicity for us locally.



Part of the team that took part

Left to right;
Colin Stacey,
Chris Brown,
Jim Wood,
Brian Golding,
Jem Wood,
John Symons,
Alec Rivett.

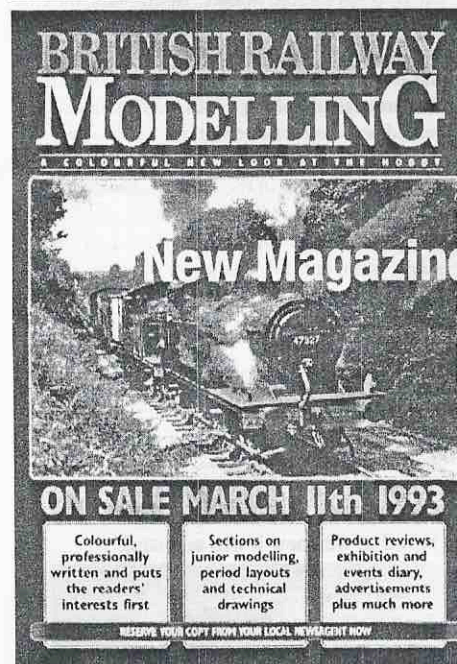
Volunteers needed

Gauge O Guild event
27 March 1993
Bletchley Leisure Centre

Please see Geoff Bell for details

Geoff and Chris are well known as Chief Stewards at MKMRS and GOG Exhibitions. Volunteers for the GOG Event on 27 March will be most welcome. Those not volunteering can expect to be contracted by Geoff or Chris in due course!

Another victim next month!



BRITISH RAILWAY MODELLING
A COLOURFUL NEW LOOK AT THE HOBBY

New Magazine Launched

ON SALE MARCH 11th 1993

Colourful, professionally written and puts the readers' interests first	Sections on junior modelling, period layouts and technical drawings	Product reviews, exhibition and events diary, advertisements plus much more
-------------------------------------------------------------------------	---------------------------------------------------------------------	-----------------------------------------------------------------------------

RESERVE YOUR COPY FROM YOUR LOCAL NEWSAGENT NOW

A new magazine "British Railway Modelling" hits the bookstalls on Thursday 11 March.

Edited by David Brown formerly Deputy Editor of Steam World, the magazine will be printed in full colour and aim at improving the standards of model railway journalism.

ModelRAIL93
BRITAIN'S ONLY ALL MODERN MODEL RAILWAY EXHIBITION

ModelRAIL 93 -
the show you cannot afford to miss

The Alban Arena
St. Albans, Herts

Saturday and Sunday
May 22 and 23 1993

OXFORD (PART 2) by Les Wood

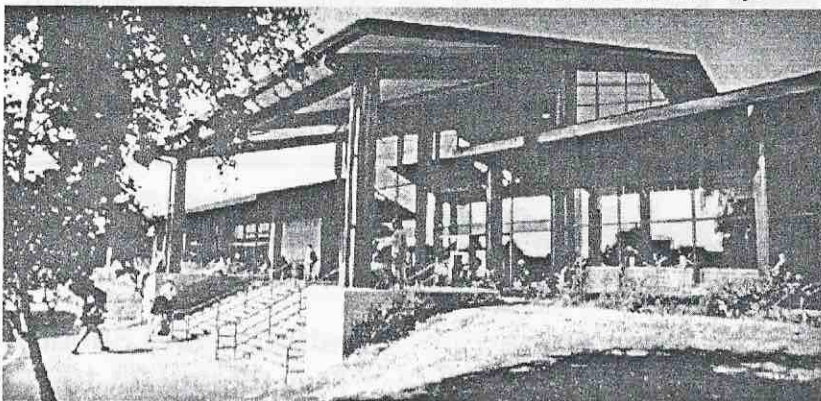
Concluding the article reprinted from Newsletter No 6, October 1971

It was during the 1950's when I began to pay frequent visits to Oxford (both for business and pleasure!). On summer Saturdays it was always most interesting, with the through services from the Midlands and North to the South Coast, changing locomotives there. One could often see locomotives of the four main constituent railways standing side by side on Oxford shed. Most trains arriving from the South were hauled by Bullied Battle of Britain or West Country locomotives to hand over to either L.M.R. Class 5's or E.R. B1's, whilst the Cambridge line produced J17, J20 or WD's on freight workings alongside the Stanier 8f's from Bletchley.

One amusing incident which comes to mind was when a GWR Grange arrived on a Wolverhampton - Poole and was replaced by a rebuilt West Country and delayed the service for about half an hour. The W.R. always operated their vacuum brakes at 25 sq. in., whilst all other regions used 21 sq. in., so a

gang of men was stationed at Oxford on such occasions to go along the train to pull the cords to release the brakes! In this case they went along as usual, the train was given the "right of way" and despite an almighty snatch and much skidding, the train failed to move. The process of pulling cords was again repeated and another attempt made without success. Eventually someone noticed the handbrake was on in the back brake van (the train had been worked by an Oxley goods guard and he had applied the brake as for a goods train, but this was never done on a passenger train in service!).

By the end of the 1950's, the diesels were appearing, Oxford - Bletchley - Cambridge went to Derby lightweight multiple units and Oxford - Reading - Paddington to Pressed Steel units. Slowly the Castles on the Worcester line went over over to Hymeks and Warships. The end of steam was in sight and Oxford as we knew it was to change.



Oxford station today is far removed from the station described in the article. Photo NSE.

A 12 Projector multi-vision family entertainment - a unique experience in Light & Sound!

Presented LIVE
By Colin Garratt

Shortly to arrive at:
Corn Exchange, Town Centre, BEDFORD
Monday 8th March 1993 at 7.30pm
Tickets ON SALE at the Box Office, Bedford Central Library
and the Tourist Information Office, St. Paul's Square, Bedford
TELEPHONE BOOKINGS - Ring Bedford 351771

AGFA Agfa
ELECTROSONIC

£3 Adult £2 Children

Tickets also available from Mr J Bristow MK 370501