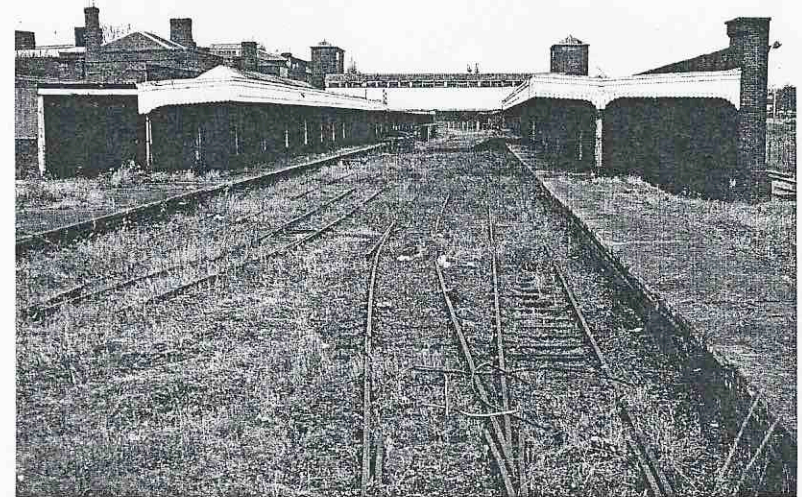




# **MKMRS NEWS**

**No. 136    MAY / JUNE 2005**



Wolverhampton Low Level station

**Milton Keynes Model Railway Society is associated with:  
The Chiltern Model Railway Association, The Model  
Railway Club, The World War 11 Study Group**

**Working within The Bletchley Park Museum**

Whilst the Virgin models stole the limelight a number of other new models were announced. The original streamlined Bulleid Pacific had been damaged in 1992 and the tools could no longer be used. A new model was announced to run alongside the rebuilt version of these famous Southern locomotives. A number of wagon livery variations were also announced that day.

*To be continued*

## Visit by Warley Model Railway Club

Sunday 3<sup>rd</sup> July 2005

Members of Warley Model Railway Club are visiting us during the afternoon of Sunday 3<sup>rd</sup> July (they are at the Leighton Buzzard Narrow Gauge Railway in the morning).

We would like to put on a good show for them and have as many layouts operational as possible (including outdoors) etc. We need plenty of volunteers to assist with operating etc.

John Hatton is co-ordinating the visit. If you are able to help on this occasion please let John know.

Warley MRC have just purchased their own club rooms which are located in a former industrial unit in Birmingham. They are known for putting on their annual exhibition at the National Exhibition Centre and many MKMRS members are well known to them.

Unfortunately their visit coincides with your Chairman being in Devon on holiday. So apologies for not making it myself.

Dennis Lovett  
Chairman

## MILTON KEYNES MODEL RAILWAY SOCIETY FOUNDED 1969

### A story worth telling

The recent televised events surrounding the 60<sup>th</sup> Anniversary of VE Day reminded me how we were involved in our first year at Bletchley Park celebrating the 50<sup>th</sup> Anniversary. I am not sure where that 10 years went but the role that railways played in the conflict of 1939-45 has still largely gone unnoticed. At Bletchley Park we do our bit to show the efforts that went into it and our efforts are appreciated by teachers getting to grips with the national curriculum, which includes the Second World War.

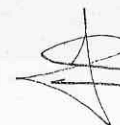
Sadly many of the railway staff involved in those movements have also passed by. Despite the need to keep the railways running – over 110,000 railway staff were released into military service and nearly 400 of them paid the ultimate sacrifice. At home there were amazing heroics being performed evacuating children, building planes and tank parts, maintaining food and supplies and moving troops, equipment and ammunition to the places that they were needed. Difficult enough in peacetime but when the enemy is blowing up large parts of the network and disrupting services, then the efforts are even more outstanding.

Soon as the railway was damaged, then trains were at the ready to move in sleepers, rails, ballast, infill rubble and the staff to do the work. The craters were still smoking when the gangs arrived and they carried on until the railway was reopened to traffic, usually in a matter of hours.

The second world war not only left the railways themselves in a very run down condition, but it taught thousands to drive and then supplied cheap redundant army lorries to kick start the road haulage industry when peace returned. The result was nationalisation – but the world was much different in 1945 and the railways never did return to their pre-war glory days.

Our railways can be proud of the part they played and we too can be proud in the way that we remind visitors to the club rooms of just what they did for the benefit of all of us.

Dennis Lovett  
Chairman



## Club Notice Board

### 2005 Woughton Swapmeets

The Swapmeet will take place between 1100 – 1500 at Woughton Campus on:

**11 September**

**11 December**

Admission is £1 Adults, 70p concessions, children under 18 free

### Welcome back

We are glad to see Ken Sharpe, Fred Fox, Ken James and Mick Clements back with us after their enforced visits to various hospitals in the area.

### RAILWAY CORRESPONDENCE & TRAVEL SOCIETY

The RCTS meets on the first Thursday of the month at the C.I.U. Working Mens Club, London Road, Stony Stratford at 1930 hours. Our long-standing friend Bob Ballard is the Chairman. *Further details from Bob Ballard on [01908 562195](tel:01908562195)*



The sad scene at Dunstable where the railway remains but unused

Another Special Edition (Silver label) release was reviewed in the same issue, Hall Class locomotive appearing as No. 6994 'Baggrave Hall'. This model retailed at £68.25.

### Another GWT release

The Class 47 locomotive was released, when No. 47813 'SS Great Britain' appeared in the green livery of Great Western Trains. In the last issue, I described how the livery adopted from 1996-99 was being changed following the takeover of the company by First Group to become First Great Western. The livery applied to No. 47813 was, therefore, already historic by the time the Farish model was released.

### Warley Exhibition News

The big news from the exhibition was the release of a number of relevant models in the red livery of Virgin Trains. The launch itself had to be toned down due to the tragic train crash which had occurred at Paddington a few days earlier. At the Graham Farish press conference, organised in conjunction with Virgin Trains, Peter Graham-Farish revealed the previously unannounced Virgin Trains models to the model railway press and presented each with an HST pack for review purposes. Peter then went on to reveal the release schedule for the other models in the range to be added before Christmas. Peter went on to thank Virgin for recognising the importance of railway companies by permitting model manufacturers to release models in their livery. Virgin's policy is to continue the traditional link, recognising the tremendous public relations benefits that such relationships bring.

Peter Graham-Farish presented Chris Green (Chief Executive of Virgin Trains) with a glass case containing the four locomotives being released in Virgin livery (HST Power Car, Class 47, Class 87 and Class 90. In return, Peter Graham-Farish was presented with a full size locomotive nameplate 'Graham Farish', with a red background. The significance of the nameplate will become apparent later in the series. This nameplate was hung on the wall at the works a few days later.

A new catalogue supplement (Volume 2) was added to accompany the main catalogue. This featured all new models produced since 1997, the photographs being taken on the former 'Mandlebury Central' layout of Milton Keynes Model Railway Society under considerable secrecy. Not one member of the club knew the significance of the photo shoot that took place and the pre-production models in Virgin livery that graced the layout. You can imagine that when all was revealed at the Warley Show, the MKMRS Chairman came in for some stick!

## **The N Gauge Story – Part Nineteen** **By Dennis Lovett**

### **Secrecy leading up to Warley**

The lead up to the 1999 Warley National Model Railway Exhibition at the National Exhibition Centre, Birmingham was pretty hectic. At the 1998 show I had been part of the MKMRS team operating the Mandlebury layout. At the show Farish were asking for suggestions for future releases. We lamented the fact that we could not run Virgin liveried models on the layout. Led by Dave Lean (a Virgin Trains driver and MKMRS club member) several of us completed suggestion forms regarding the introduction of such a product, which was acknowledged by Peter Graham Farish a couple of weeks later with the promise to see what could be done. As I was working for Connex South Eastern at the time, little did I realize that I would be the one who would be doing just that twelve months later! I had joined Virgin in April 1999 and almost immediately was told to sort out the problems that various model manufacturers were having at that time. Prior to the show, I was involved with Greg Phillips the designer at Holton Heath in providing photographs and drawings to ensure that the Virgin Trains red livery was accurately reproduced on the models. This involved a couple of factory visits and the planning process for launching the range.

The October 1999 Railway Modeller in previewing the show reports that the opening would be performed by Chris Green. He had recently returned to front line railway management to lead the renaissance of Virgin Trains. Paul Jones the Exhibition Manager is quoted in the magazine as saying "His appearance at the show is welcomed by the organisers reflecting that a large number of visitors travel to the exhibition by Virgin Trains". What it did not report is that prior to this there would be a press conference for the railway press at which Farish would reveal the release of Virgin liveried models or that the curtains at the opening would reveal the complete range for all visitors to see. Or that the three part HST set would go on sale (and sell out) immediately the show opened!

### **More Special Editions**

The British Railways rebuilt Bulleid pacific was released as a Special Edition (Silver label) model as West Country Class No. 34012 'Launceston'. This model was reviewed in the November 1999 Railway Modeller and cost £89.95.

## **Obituary – Stan Pennington** **By John Forman**

All of us were saddened to hear of the death of Stan Pennington on Saturday 26<sup>th</sup> March.

My first recollection of Stan, was having a lengthy conversation with him at an event known as The Watford Wind-up back in 1983. It was during this discussion, that I happened to mention I was operating a tinplate layout in the village of Hanslope, the following day.

I was very surprised when Stan turned up, at what was only my second exhibition, I certainly appreciated his help and encouragement.

Over the years we met regularly at all the local and popular events, even occasionally meeting at the Milton Keynes 'Thursday' market, probably both looking for the same 'gems'. I also believe that Stan visited many car boot sales, where he picked up the odd bargain. Although I have only seen a small part of his collection, he certainly had some very unusual and diverse items.

Of course, Stan will also be remembered for the layouts he organised with his long term friend Brian Barnes. These were at Gauge O Guild events, the annual Christmas light switching on ceremony in Stony Stratford, transport days at Stacey Hill Museum and our own MKMRS exhibitions. Stan and Brian travelled together to swapmeets, get-togethers, Train Collectors Society events and exhibitions all over the country.

With Brian he was one of the main instigators of our tinplate room, here at Bletchley Park. During the last two years, I have spent some very enjoyable Tuesday evenings with Stan and the rest talking about and more importantly, 'playing trains'.

Stan was a real gentleman and will be sadly missed by everyone who knew him. Our sympathies go to his wife Joan, daughters Jane and Vera and all their families.

### **Chairman's postscript**

I am grateful to John for providing Stan's obituary

Stan was a long standing member of MKMRS and joined us long before a tinplate train ever turned a wheel in our tinplate room. Whilst there was little opportunity to run his own trains in the old club room, the creation of space at Bletchley Park

gave the opportunity to do something positive for those who shared Stan (and Brian's) enthusiasm for historic models. I know it has given a lot of people a great deal of pleasure and our tinplate team has been expanded as a result.

The club was well represented at Stan's funeral at Stoke Hammond Church. We learn't that Stan had been brought up in Shropshire, had been employed at Crewe Works and served during the war in the RAF. He was later employed at Bletchley Park. In the churchyard it was ironic that as we said farewell to Stan, the silence was broken by a plane passing overhead and the sound of a train horn passing through the village.

Stan will best be remembered for his patience and understanding. He and Brian were certainly responsible for kick starting our club's growing interest in historic model trains and his contribution towards establishing our complex can now be rightly acknowledged.

## **BLETCHLEY PARK ROSTER – 2005**

Please arrange swaps if you cannot attend

### 2005 Roster

			National Shows
Sunday	01-May Derek Hart	Chris Baker	Bristol
Saturday	07-May Bill Ball	Pete Ball	
Sunday	08-May Chris Hughes	Daniel De'ath	
Saturday	14-May Bruce Garwood		
Sunday	15-May Bruce Garwood	Matt Rainer	
Saturday	21-May Ian Gilroy		
Sunday	22-May Geoff Blackwell	Ken Sharpe	
Saturday	28-May John Hatton		
Sunday	29-May Fred Collins	Phil Wood	
Saturday	04-Jun Stephen Walker	Alan Thompson	
Sunday	05-Jun Anthony Careless	Michael Careless	
Saturday	11-Jun Chris Lester	Robin Rowles	Chatham
Sunday	12-Jun Les Wood		Chatham
Saturday	18-Jun Ken Wiggins	Fred Fox	
Sunday	19-Jun Brian Barnes		
Saturday	25-Jun Ken Ranns		
Sunday	26-Jun		
Saturday	02-Jul Eric Bowman	Eric Preston	
Sunday	03-Jul Dennis Lovett		
Saturday	09-Jul Matt Rainer	Ted Mellor	
Sunday	10-Jul Fred Collins	Phil Wood	
Saturday	16-Jul Tony Winn	Tim Davey	
Sunday	17-Jul Bill Ball	Pete Ball	

Saturday	23-Jul Derek Hart	Chris Baker	
Sunday	24-Jul Chris Hughes	Daniel De'ath	
Saturday	30-Jul Bruce Garwood		
Sunday	31-Jul Bruce Garwood		
Saturday	06-Aug John Hatton		
Sunday	07-Aug Geoff Blackwell	Ken Sharpe	
Saturday	13-Aug Chris Lester	Robin Rowles	
Sunday	14-Aug Les Wood		
Saturday	20-Aug Stephen Walker	Alan Thompson	
Sunday	21-Aug Anthony Careless	Michael Careless	
Saturday	27-Aug Ken Ranns	Matt Rainer	
Sunday	28-Aug Fred Collins	Phil Wood	
Saturday	03-Sep Eric Bowman	Eric Preston	
Sunday	04-Sep Brian Barnes		
Saturday	10-Sep Ken Wiggins	Fred Fox	
Sunday	11-Sep Les Wood		
Saturday	17-Sep	Ted Mellor	
Sunday	18-Sep Dennis Lovett		
Saturday	24-Sep Tony Winn	Tim Davey	
Sunday	25-Sep		
Saturday	01-Oct Bill Ball	Pete Ball	
Sunday	02-Oct Geoff Blackwell	Ken Sharpe	
Saturday	08-Oct Derek Hart	Chris Baker	
Sunday	09-Oct Chris Hughes	Daniel De'ath	
Saturday	15-Oct John Hatton		
Sunday	16-Oct Anthony Careless	Michael Careless	
Saturday	22-Oct Chris Lester	Robin Rowles	
Sunday	23-Oct		
Saturday	29-Oct Ken Ranns		
Sunday	30-Oct Brian Barnes		
Saturday	05-Nov Bruce Garwood	Ted Mellor	
Sunday	06-Nov Bruce Garwood		
Saturday	12-Nov Eric Bowman	Eric Preston	
Sunday	13-Nov Les Wood		
Saturday	19-Nov Stephen Walker	Alan Thompson	
Sunday	20-Nov Fred Collins	Phil Wood	
Saturday	26-Nov Ken Wiggins	Fred Fox	
Sunday	27-Nov Anthony Careless	Michael Careless	
Saturday	03-Dec Tony Winn	Tim Davey	Warley
Sunday	04-Dec Geoff Blackwell	Ken Sharpe	Warley
Saturday	10-Dec Derek Hart	Chris Baker	
Sunday	11-Dec Dennis Lovett		
Saturday	17-Dec John Hatton	Chris Lester	
Sunday	18-Dec Chris Hughes	Daniel De'ath	
Saturday	24-Dec closed		
Sunday	25-Dec closed		