



Peter Findley's '00' gauge layout 'Oakhill Green'



Drive a train '00' gauge DC layout operated by Ian Bartlett, which with the 'Underground Ernie' layout was raising funds for Willen Hospice.



'QUARTERLY NEWS'

155

40th ANNIVERSARY 1969 – 2009

SPECIAL

CLUB EXHIBITION 2009



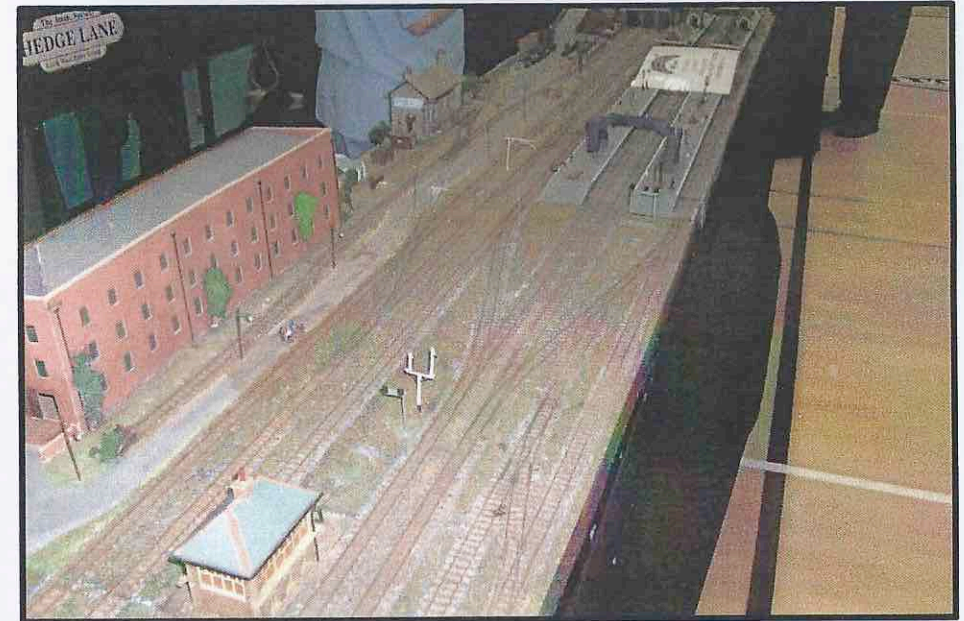
Chris Baker with his 'N' gauge DCC layout 'Contrarius Junction' which was voted best club layout at the exhibition.

Editorial

This is intended to be a 'snapshot' of our excellent exhibition, I just took photographs as and when I could, whilst helping to run the tinplate layout. I hope I have at least captured a small flavour of what actually happened. However, I could not get everyone at their particularly layouts and it was impossible to include every single person, because there were so many members, doing so many different jobs. We had 1299 visitors through the door and we made a profit, we also raised £160 for Willen Hospice. We must say a big 'Well done and thank you' to Gareth, and to every single member, who helped in whatever way during this show. In my opinion, I think it was a brilliant performance by everybody concerned, certainly all members were a credit to the club. John.



'Setting up' on the Friday evening.



The 3mm Society's layout, 'Hedge Lane'.



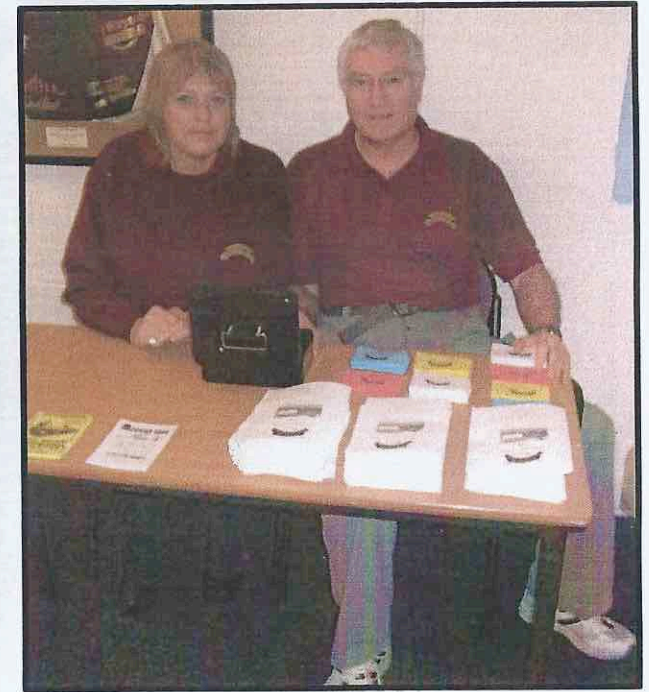
Amersham & Chorleywood MRS's '0' gauge layout 'Dewhurst'.



Graham Sturman's 'HO' gauge DCC layout 'Auerbach Yard'.



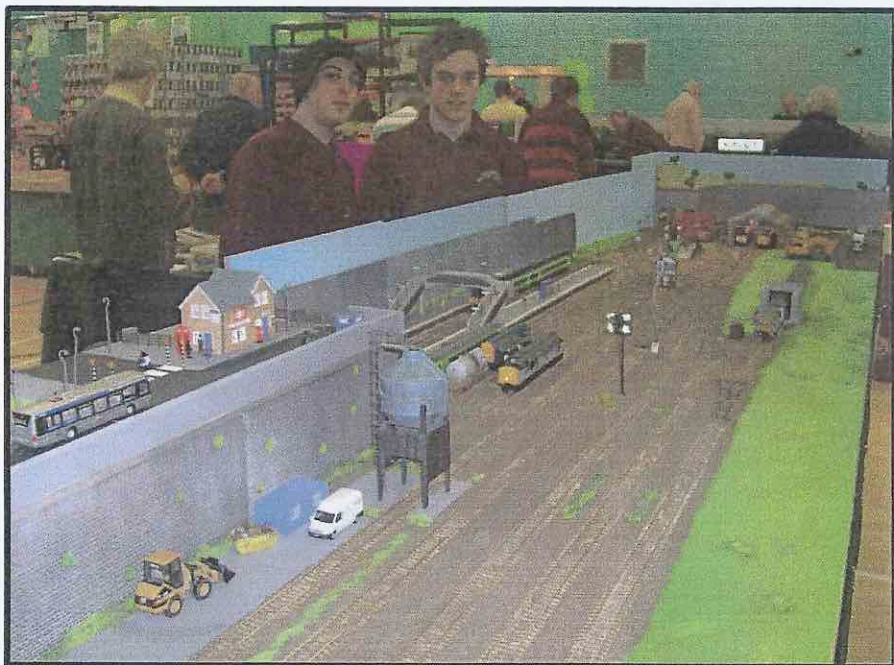
Graham Jones's 'Z' gauge layout 'Standen Watchett'.



Gareth Homersley, exhibition manager and Chris Hughes, club secretary and his wife Sue, taking the money.



The 'N' gauge group with their layout 'Norgate'



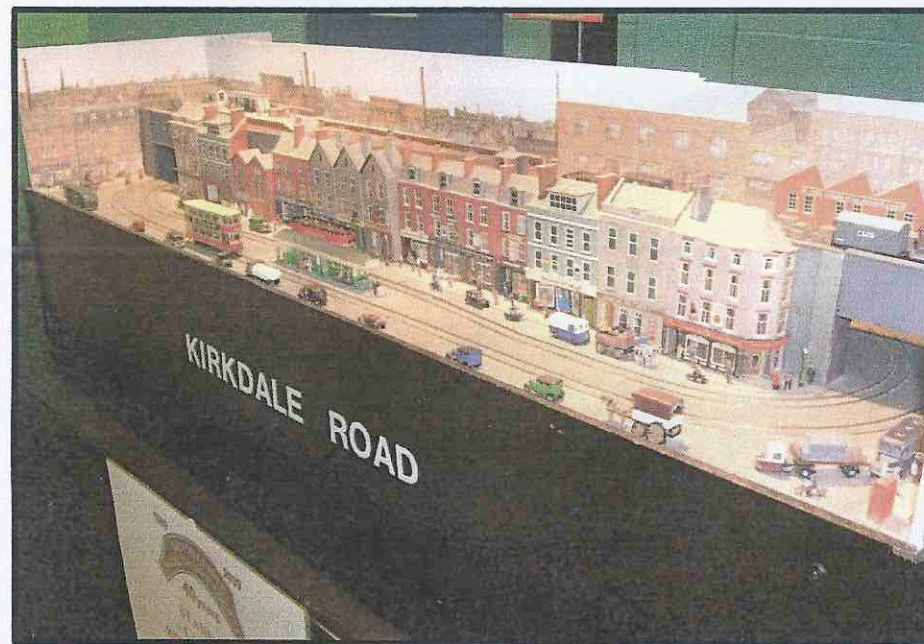
Daniel and Samuel Deathe on their 'OO' DCC layout 'Castle Bridge'



Bruce Garwood's 'N' Gauge layout 'Westcastle'



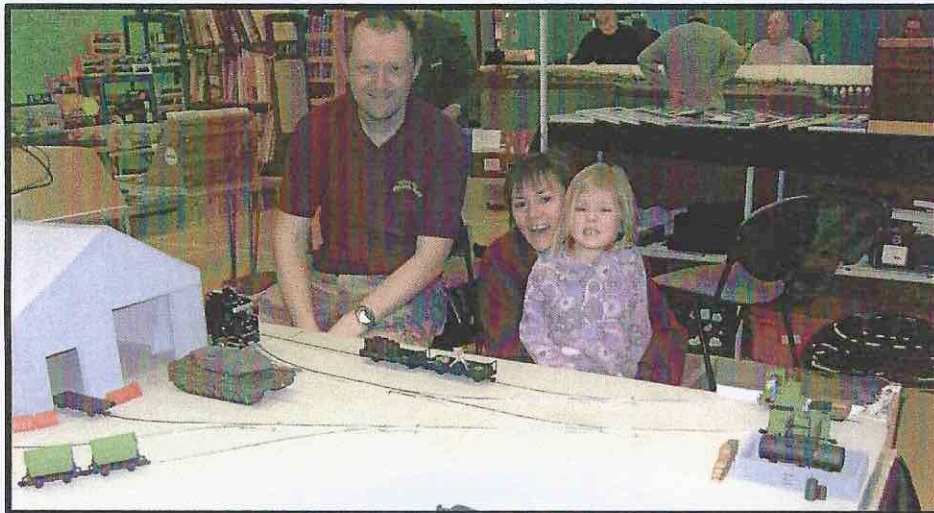
Dave Dawes's 'N' gauge DCC layout 'Lincoln' which won the best visiting layout in the show



Andy Mason's 'N' gauge layout 'Kirkdale Road'



Mark Agnew and his wife Angela, with his model of a class 50 Diesel Electric Locomotive.



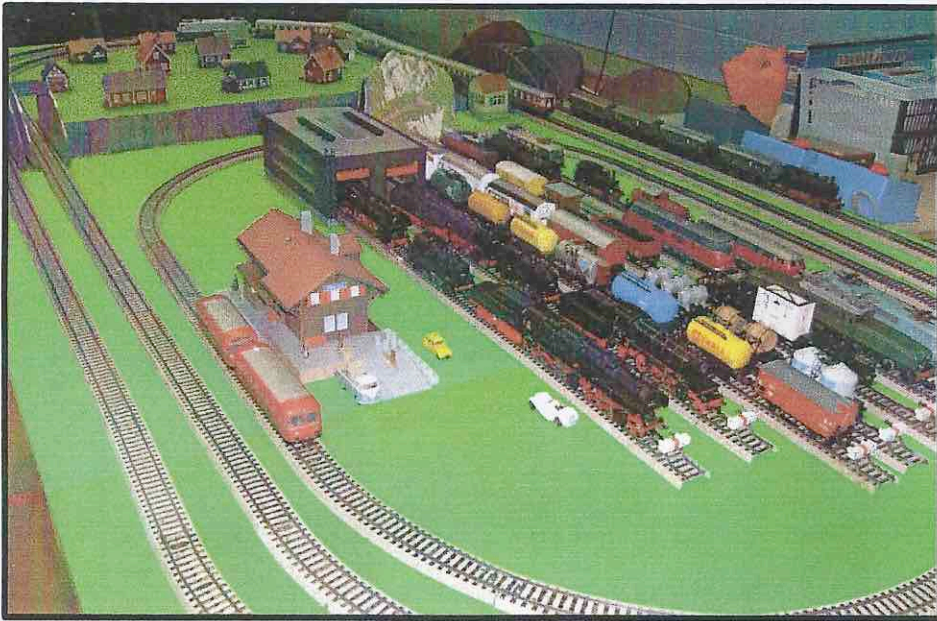
Martin and Tracey Shenton, with their daughter Verity, on their 'Shortmoor Military Railway'.



Phil Wood, Fred Collins and Bruce Hankins, on the 'Thomas the Tank' layout 'Sodor Junction'.



Colin Goodenough's '00' DCC layout 'Thrasher Road'



Roger White's Marklin 'HO' layout 'Weissentalbann'



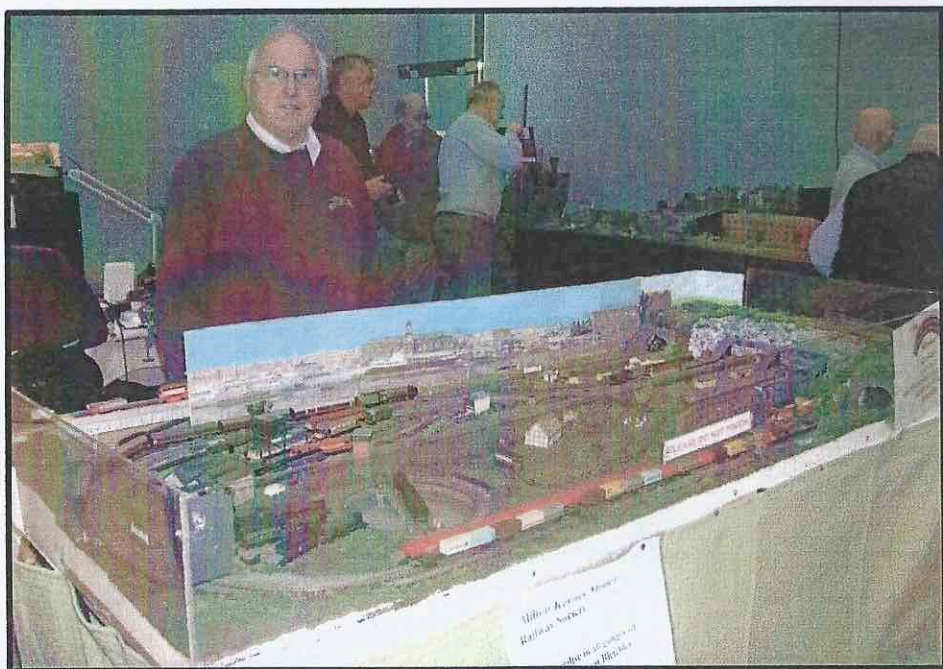
Last year's best layout, Chris Lester's 'EM' gauge 'Burton Bradstock'



Geoff Blackwell's 'O' gauge light railway layout 'Town End' with Geoff Trenholme.



Ken Rann's on 'Barwell' explaining something to Bruce Hankin and Martin Shenton.



John Hatton on his 'N' gauge 'Steam and Diesel' layout



Peter and Bill Ball on their 'N' gauge KATO demonstration layout.

Fulfilling An Ambition

Although Brian Barnes has organised many exhibition layouts over the years, he has had an ambition to organise a 'very large' 0 gauge tinplate layout, for a very long time. When Gareth came into the tinplate room to ask if we had any ideas of a layout for this year's show, that is when we told him, about Brian's ambition. Gareth offered us 20 tables, all exactly the same. John Forman came up with several proposals of various table plans and eventually one was chosen as the best suitable, covering an area of 30ft by 12ft. Brian would provide three bridging sections, one at each end and one across the middle. David Ramsey drew a track plan to suit the table design we were going to use and then, produced a complete list of the track we would require. It was then a matter of finding the required track, which we achieved with the help of a mutual friend Bill Marston. Michael Clement and Les Duncan soldered wire onto various pieces of track to attach the controllers. John made four identical signs in picture frames, one for each corner of this large layout. Brian would provide the stock and controllers for the outside line, David for the second and third tracks, John for the fourth and fifth and Michael for the sixth. Trains running during the day included the following makes, Bassett Lowke, Hornby, Ace, ETS, Paya and Carette. The layout created a great deal of interest throughout the day. After it was over, Brian was very satisfied to have achieved this ambition, but, as we all were, he was extremely tired! See a picture of the complete layout on the next page.



The gang of four, David Ramsey, Michael Clement, John Forman and the man who had the dream, Brian Barnes, they have a combined age of exactly 300!



The 'O' gauge tinplate layout presented by the MKMRS Tinplate Group, with Brian looking very happy in the centre.