



BRISTOL MODEL RAILWAY EXHIBITION 1992

SPONSORED BY
REPLICA RAILWAYS

BRITAIN'S LARGEST MODEL RAILWAY EXHIBITION

Friday	May 1st	3pm - 9pm
Saturday	May 2nd	10am - 7pm
Sunday	May 3rd	10am - 7pm
Monday	May 4th	10am - 6pm

BRISTOL EXHIBITION CENTRE

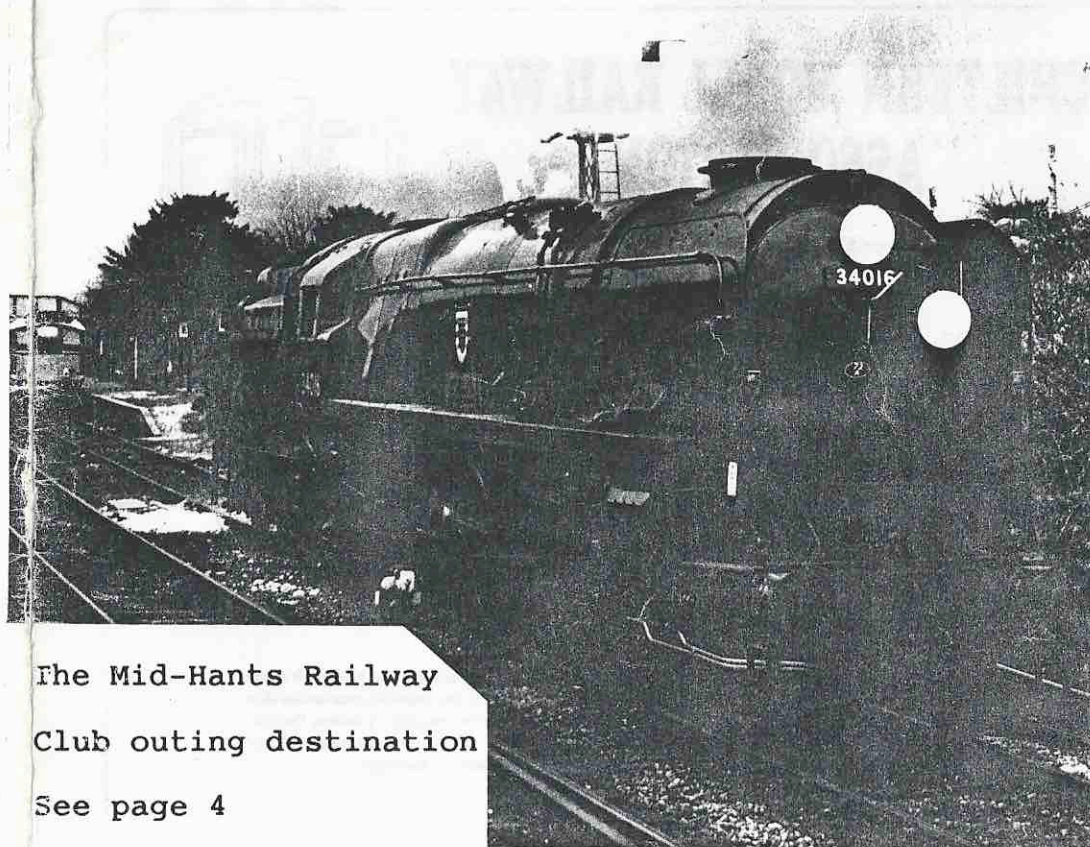
Layouts, Trade Stands, Preservation Societies,
Demonstrations,
Licensed Bar, Snacks,
Restaurant.



ADULT PRICES HELD
2 CHILDREN ADMITTED FREE
WITH EVERY FULL PAYING ADULT
ADULT £5.00 OAP/EXTRA CHILD £3.50

MILTON KEYNES MODEL RAILWAY SOCIETY NEWS

No 2
May 1992



The Mid-Hants Railway
Club outing destination
See page 4

Published by Dennis Lovett, Chairman, Milton Keynes Model Railway Society
c/o 4 Browning Crescent, Bletchley, Milton Keynes MK3 5AU.
Telephone: 0908 376750.



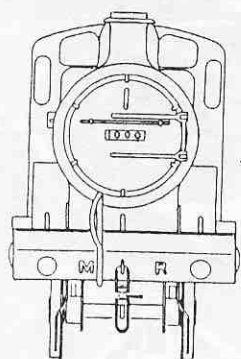
Quarterly General Meeting
including presentation of 1991 audited accounts

8pm at the club room

MAKE A DATE FOR 93

THE
CHILTERN MODEL RAILWAY
ASSOCIATION

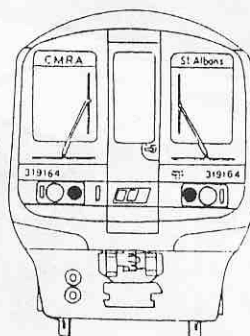
MODEL RAILWAY EXHIBITION



IS TO BE HELD AT

THE ALBAN
ARENA

ST. ALBANS



Sat. 9th and Sun. 10th January, 1993

SEE THE MODEL RAILWAY PRESS OR LOCAL ADVERTS
FOR DETAILS NEARER THE DATE

MILTON KEYNES MODEL RAILWAY SOCIETY

The club was formed in 1969 and is an Associate Member of The Model Railway Club and a Member of The Chiltern Model Railway Association.

President: Jim Wood	Secretary: Chris Hughes	Committee: Geoff Bell
Vice President: Les Wood	Treasurer: Gordon Etherington	Fred Collins
Chairman: Dennis Lovett	CMRA Rep: Eric Bowman	Phil Gilbert
Vice Chairman: John Symons	Librarian: Mark Wilson	Colin Catley

Welcome to the second of our monthly newsletters. I have endeavoured to increase the number of pages to enable our range of activities to be properly reflected. The first issue was well received and several members have told me how much they appreciated our efforts at improved communication.

Since the last issue we have progressed on both the extension and the library areas. Mark Wilson is now attacking the large boxes of magazines we have accumulated over the past few months and these are now being incorporated into the files. When the work is completed we should have a very comprehensive library and one which will be invaluable in the years to come.

We shall be holding a short QGM on April 28 at the club room starting at 8pm. The club accounts were presented at the AGM but have since been audited and will therefore be formally presented by Gordon Etherington our Treasurer.

May is a busy month. Both the Crown 7mm Society and the EM Gauge Society are holding conventions at the Leisure Centre during the month. As a club we are involved in hosting the Crown 7mm event and we need all the help we can muster for this event. See details elsewhere in this issue and please complete the enclosed form.

Plans are now being finalised for our club outing on July 5th. Details appear elsewhere in this issue and a booking form is enclosed.

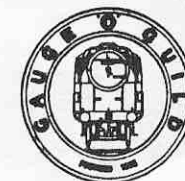
Items for inclusion in the June edition should be passed to me by 15 May.

Dennis Lovett
Chairman.

Milton Keynes Branch Gauge O Guild

Open Day - June 21st Masonic Hall

Full details next issue.



CLUB OUTING TO MID-HANTS

The club outing has been organised for Sunday July 5. Gordon Eckersley has kindly volunteered to take a busmans holiday and drive "Bertie" again.

The Mid-Hants runs from Alton to Arlesford and has a fine collection of motive power. July 5 is scheduled for an American Day, so not doubt the lines USA S160 will be in service.

Seats on the bus are limited to 29, so it is a case of first come, first served. Costs will include train fare and appear on the booking form.

The bus will start from the club room at 9.15 and will pick up in Bletchley. Full details on the attached form. Please complete and return a.s.a.p. to avoid disappointment.



The N Gauge Project

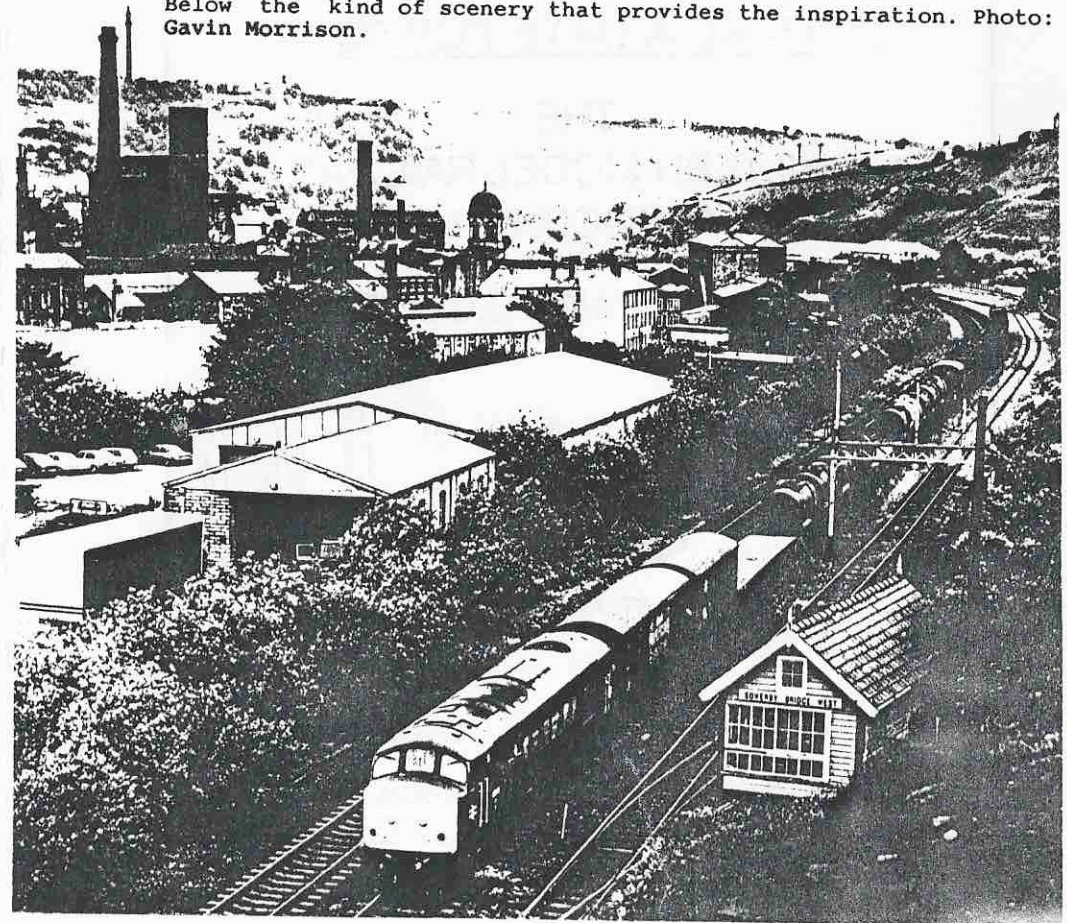
Over the past few weeks the N Gauge project has been progressing with great vigour. Not only have the baseboards been built, but the track laying gang have been working well and the first trains have already graced the main lines.

The project is set in the Pennines, somewhere on the Yorks/Lancs border. This gives excellent potential for the scenery and although not based on any particular prototype encompasses many of the features that are associated with this area.

The decision was made to build a modern image layout based on current BR practise. To enable steam locomotives to be seen a preserved line is being built. The Keighley & Worth Valley and East Lancs Railway provide the excuses and will deal with the minature tourists who will no doubt flock to the line. Rumours have it that the preservation boys have been eyeing up American diesels, German pacifics and Japanese multiple units to provide alternative motive power!

If you want to know more introduce yourself to the team. We will soon find you a job.

Below the kind of scenery that provides the inspiration. Photo: Gavin Morrison.



HISTORICAL MODEL RAILWAY SOCIETY

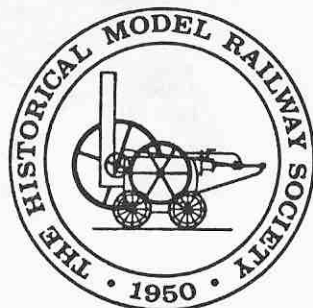
Bedford Area Meeting - 29 April 7.30pm

Milton Keynes M.R.S. Club Room

- MKMRS members welcome

"Midland & Great Northern

Modelling in 7mm Scale"



CHILTERN MODEL RAILWAY ASSOCIATION

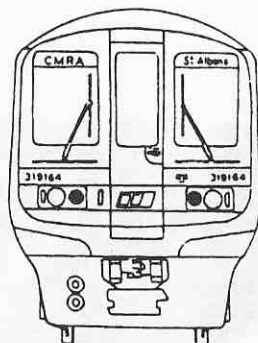
C.M.R.A. Convention

6 June at Hatfield

Admission, including lunch is free

Places must be pre-booked by May 5th.

Further details and bookings to Eric Bowman.



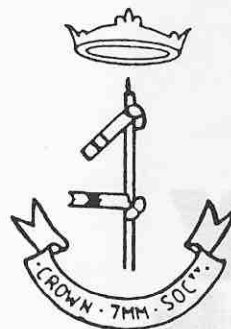
Founded in 1955, the E.M. Gauge Society remains the specialist Society for followers of 4mm scale modelling in both EM and 18.83mm gauges.

The Society holds three major expoEM events each year which are more than just exhibitions. It is true that layouts can be viewed and the purchase of model supplies is possible, but expoEM goes further than this. The whole "atmosphere" must be experienced; continuous demonstrations, a lecture theatre; and the informal chat all contribute to this unique event. The layout operators actually stop and talk! Trade suppliers explain their products, give advice and generally assist the modeller.

expoEM

Bletchley Leisure Centre

Saturday 16 & Sunday 17 May



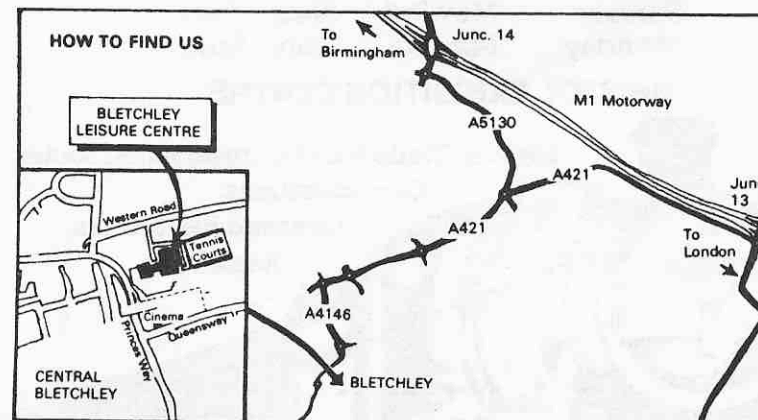
CROWN 7mm SOCIETY



PRESENTS
IN CONJUNCTION WITH THE
7MM NARROW GAUGE ASSOCIATION A.G.M.

THE FOURTH 'O' GAUGE MODEL RAILWAY CONVENTION

AT THE BLETCHLEY LEISURE CENTRE
PRINCES WAY, BLETCHLEY, MILTON KEYNES



SATURDAY 30th MAY 1992 (10am - 5pm)

Featuring: Bring and Buy Stall
10 Layouts, Gauge 1 Layout,
Trade Stands, Test Track for Live Steam,
2 and 3 rail, Fine and Coarse Scale
running, 16mm and 7mm
Narrow Gauge

REFRESHMENTS
LICENSED BAR
FREE PARKING