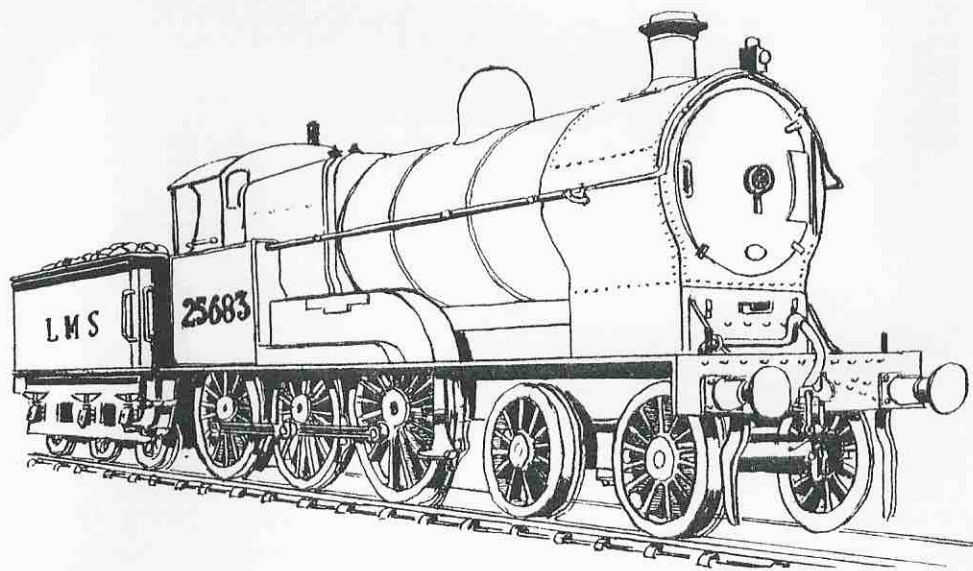




Eleventh Model Railway Exhibition



The Leisure Centre, Bletchley

Saturday 30 October 1993

10.30 - 6pm

Sunday 31 October 1993

10.30 - 5pm

20+ working layouts in all the popular scales.

Well supported by trade and other stands.

Live steam rides. Refreshments

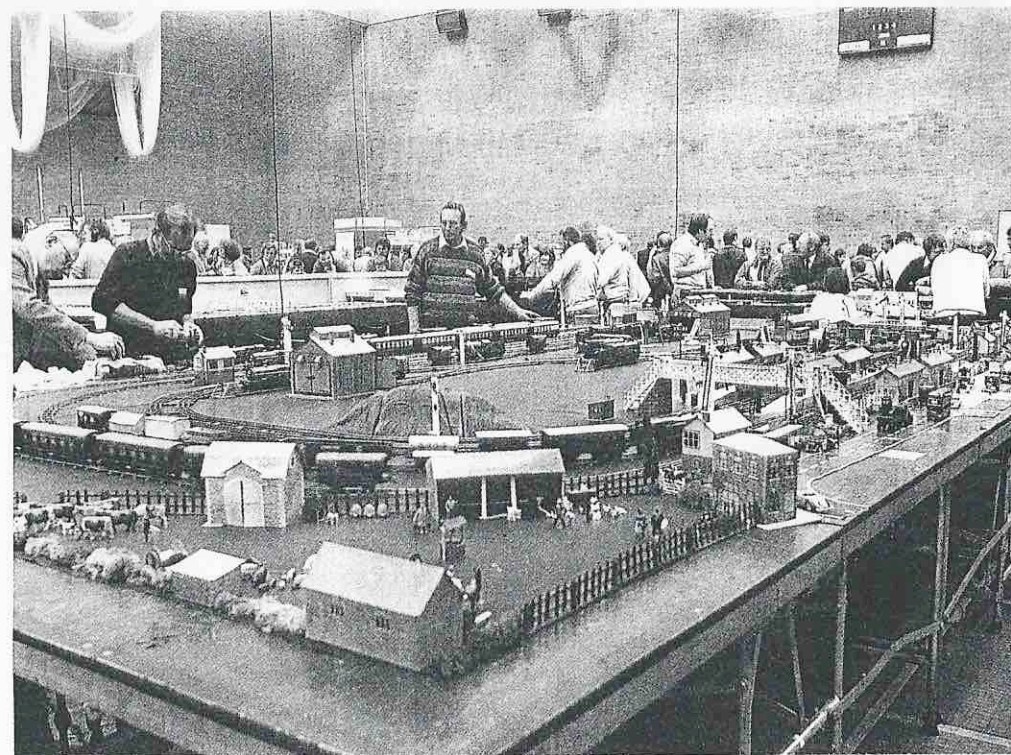
Day membership £2, Family (2+2) £5, Children & Senior Citizens £1.

Bletchley Leisure Centre is 10 minutes walk from Bletchley Station (Euston-Northampton line) and has an adjacent multi-storey car park (free).



No.20

November 1993



Exhibition Time

Published by Dennis Lovett, Chairman, Milton Keynes Model Railway Society
c/o 4 Browning Crescent, Bletchley, Milton Keynes MK3 5AU.
Telephone: 0908 376750.

QUIZ CORNER from SAGITTARIUS

HILL 60

Over the hills and far away. There are 30 names of hills in England, Scotland and Wales in this word search. All are to be found today in use on BR but on which class?

G A N I U Q Y T G A I L S A C R A I G P
 O E S Y A H L L I W H G I H P S O L L F
 A I R C O S D E T R I R M Y A R A M Y O
 T N E I H D A I L L O P C A T S T E D I
 F E G R E I T G P U T S H R T G D B E U
 E A R M K G E R E F X E T O S U H E R Y
 L H E H A R N H Z N A E N T R R N N F T
 L X A O Z E Q E A X S B T G O R Y M A R
 O A T R K A R O T L U E O R A N L A W E
 P T G N E T W N R R L N C O N A L C R W
 U B A R Y W O F Y M T I A T U C E D T Q
 D L B P H H A T F B W A O G H I V U G A
 S L L E K E O D A E I C R N T C L I B S
 X E E D S R D Q N S F D E I U H E Y I D
 V F B E N N E V I S U X A N R E H O D F
 S R A O G S T R Y F Z I K I O W H I E G
 C A D E R I D R I S C S F H S C D T A H
 A O M L R D A X K A N T Z S O A H K N J
 F B L A O E Y I D T N E H G Y N E P N K
 E D H U T F D A M A Y O B T E I A T A L
 L L E H M D V T N O T I E A S S P F M Z
 L I J T A A F U S E R A N R T P K T B X
 O W H W M R O T K C A B L H O J M Z I C
 V O H R C M P I U A D L U T R O H K A V
 G R A G A N H C O L Y A I S T D C R N B

Ailsa Craig	Glastonbury Tor	Quinag
Back Tor	Glyder Fawr	Scafell
Ben Lui	Goat Fell	Schiehallion
Ben Macdui	Great Gable	Sgurr Na Ciche
Ben Nevis	Great Whernside	Shining Tor
Bidean Nam Bian	Helvellyn	Skiddaw
Cader Idris	High Willhays	Stac Polliadh
Canisp	Lochnagar	Tryfan
Cir Mhor	Mam Tor	Wild Boar Fell
Crib Goch	Pen-y-Ghent	Yes Tor

Answers from last month

1. Hull & Barnsley Railway
2. Great North of Scotland Railway
3. Bideford, Westward Ho! & Appledore Railway
4. Burry Port & Gwendraeth Valley Railway
5. Weston, Clevedon & Portishead Railway
6. Oldham, Ashton-under-Lyne & Guide Bridge Railway
7. Maryport & Carlisle Railway
8. Stratford upon Avon & Midland Junction Railway
9. Lynton & Barnstaple Railway
10. North Staffordshire Railway
11. Taff Vale Railway
12. Mersey Docks Harbour Board

MILTON KEYNES MODEL RAILWAY SOCIETY

The club was formed in 1969 and is an Associate Member of The Model Railway Club and a Member of The Chiltern Model Railway Association.

President: Jim Wood	Secretary: Chris Hughes	Committee: Geoff Bell
Vice President: Les Wood	Treasurer: Gordon Etherington	Fred Collins
Chairman: Dennis Lovett	CMRA Rep: Eric Bowman	Colin Catley
	Librarian: Mark Wilson	Chris Garner

Making an Exhibition of ourselves

Is it really two years since the last exhibition? The answer I am afraid is yes and the time between shows seems to fly by. In the few remaining weeks up to the 30/31st, the activity will be increasing and with it the apprehension that some of us feel as the weekend approaches.

Our Exhibition Manager, Chris Hughes, has already been busy for most of the time since our last show, contacting layout owners, laising with the venue, booking tables, dealing with telephone enquiries and writing letters. As someone who has undertaken that role in the past, I can assure you it is not easy. There are times when most exhibition managers get tired and emotional, although we are fortunate that Chris is far more placid and patient than some. When I was exhibition manager, the tiredness was associated with the lack of sleep that resulted from the damage I had done, albeit temporarily and only on paper, to the clubs bank account. Putting on an exhibition is expensive and it is important that we attract plenty of people through the doors to pay for it. We have always done so and I am confident that we shall do so again.

An exhibition manager works under many constraints. Some layouts are booked up years ahead, others are suddenly unavailable. The big ones from far away cost lots of money. There are beds to find, meals to cook, leaflets to print, guides to write and vans to be driven. There are times when an exhibition manager feels that he is doing most of it himself, even when he is not!

The success or otherwise of a model railway exhibition does not lie in the hands of one person. Like a football manager, the exhibition manager can do very little once the kick off comes. It is down to teamwork and thats where we, the players come in. Chris has done an excellent job in kitting us out for the match. We must now take on the remaining tasks and ensure the kind of result, for which our exhibitions are well known - quality, value for money and enjoyment. We must go out of our way to be friendly to those who are exhibiting and patient when visitors ask questions. Please do all you can to promote the show in the area where you live and work. Please assist the exhibition team by offering assistance with overnight accomodation, catering and stewarding.



Dennis Lovett
Chairman

Club Notices

JOHN SYMONS

Les Wood, Gordon Etherington, Ken James and myself attended the service at Truro on Monday 6 September 1993. The Rev. Ian Pusey, vicar of St. Mary's, Bletchley and a well known railway modeller officiated at the service, which was well attended by family and friends including those with railway links from Cornwall. There was a good turnout at the Memorial Service on 24 September

The club has agreed to donate £50 to the Royal National Lifeboat Institution (Penlee Branch) and several members have also generously contributed. In addition we shall have a RNLI lifeboat collecting box at our exhibition to enable additional funds to be collected from visitors and fellow exhibitors.

VICE CHAIRMAN'S DUTIES

Following the death of John Symons it has been decided by the committee not to appoint a new Vice-Chairman until our Annual General Meeting in January. In the meantime our Vice-President, Les Wood, has kindly offered to cover the Vice-Chairman's duties until the AGM, thus giving us time to consider candidates for the role after our exhibition.

KEITH REYNOLDS-ROBINSON

It is with regret that I have to inform members of the death of Keith Reynolds-Robinson at his Northampton home recently. Keith was a skillful modeller who recorded several successes in club competitions and was active on the O gauge layout where his colourful private owner wagons made a pleasing sight. At the time of going to press further details were unknown, but the funeral had taken place before we were notified. Our sympathy to Keith's family in their time of loss.

QGM

A QGM will be held on Tuesday 26 October at 8pm in the club room. This will be the last chance for us to get together to discuss arrangements before the Exhibition the following weekend. Please do your best to be there.

STEAM IN TOWCESTER

Around 12 members attended the second of Steve Dennison's running sessions at Towcester on Sunday 12 September. Despite the downpour (it also rained in 1992), a good time was had by all. Thanks to Steve and Peggy for looking after us so well. Steve hopes to arrange for some sunshine next year!

LEAFLETS & POSTERS

We have plenty of leaflets (10,000) and A3 size posters (2,000) advertising our exhibition and would be grateful for help with distributing them. Copies are available from the club room.

CONGRATULATIONS

Congratulations to Margaret Wood (Les's sister, well known for her culinary activities at our exhibitions) who has recently married. MKMRS wishes Margaret and husband Michael a happy future together.

In the beginning (Part 18)

At the October 1984 Committee meeting it was recorded that Doug Moorcroft had generously donated two trophies to the club for use in our annual competition. These remain in use today and include the GWR shield and rail trophy. Like September (see part 17 in the October issue), October 1984 was also a busy month. On the 7th, Allan Dare's "Chipping" and Don Pigott's "Trams", represented the club at the Railex show at Aylesbury. On the 27th the club took 5 layouts to an exhibition organised by Wolverton Methodist Church. They were; Trix Twin (John Hatton), Woodford O gauge (Les Wood), The old club test tracks, China (Peter Jarvis) and Chipping (Allan Dare). On the same day John Symons and the O gauge team took the old O (Ayot) layout to the Chelmsford MRC exhibition. Not a bad turn out that weekend!

At the October QGM, Chairman, Les Wood, explained that committee member Terry Scott had not attended the past four committee meetings, nor offered any apologies for his absence. Terry was a hardworking member and despite our efforts to contact to him, simply drifted from the scene. Les also reported on the poor attendance at exhibitions. The Wolverton event which the club participated in had been poorly attended and the Chelmsford exhibition had reported a £500 loss. The Chairman thanked those who had worked in the library area, notably Geoff Bell, Dave Fearn and librarian, Mark Wilson. The Chairman reminded the membership that the library was now up and running and open for business, and that he hoped the members would make good use of it. The HMRS used the club room on the following evening when Bill Ibbott spoke on the Midland Railway.

At the November committee meeting it was reported that the Hedingham Insurance claim had not been settled and that legal action now looked the only option. Because of the heavy loss encountered by the home club at the Chelmsford Exhibition, MKMRS reduced its travelling expenses to £9.

London Central represented the club at the Hatfield Exhibition on November 17 and a successful Bring & Buy was held on the 27 November which made £12 for the club funds. HMRS used our club room on November 28 when Geoff Williams gave a lecture on his famous 4mm Aylesbury LNWR layout.

Issue No 30 of the club magazine (by now known as THE LINK and under the Editorship of Mike Thomas), appeared in December 1984. Articles included a report on the Wolverton Exhibition, Electrics by George Barratt and items on our involvement with the first Bletchley Gauge O Guild Convention including reproduction in full of thank you letters from Doug Moorcroft (Organiser) and Colin Horn (President). Les Wood reported on "Exhibitions & things" and discussed the importance of such events. I believe No 30 was the last club magazine to be published before the first issue of MKMRS NEWS appeared in April 1992. We need only 11 more issues for the record!

At the AGM held on 29 January 1985, the Chairman (Les Wood) reported that the trade was at last showing some stability. The club had attended some 21 exhibition venues during 1984. Les expressed disappointment that some of the social events planned for the past year had been cancelled due to lack of support. Roger Blackburn reported that the new O gauge layout would be named Alverton. Our own 1985 exhibition plans were progressing well and several layouts had been booked already. Les Wood and Dennis Lovett were appointed joint Exhibition Managers. The club officers were returned unopposed with Geoff Bell, Fred Collins, Chris Hughes and Austin Daly elected to the committee.

1985 looked to be another busy year. /to be continued.

1993 Exhibition Guide



MKMRS 11th Exhibition
List of Exhibitors
Layouts shown in Bold

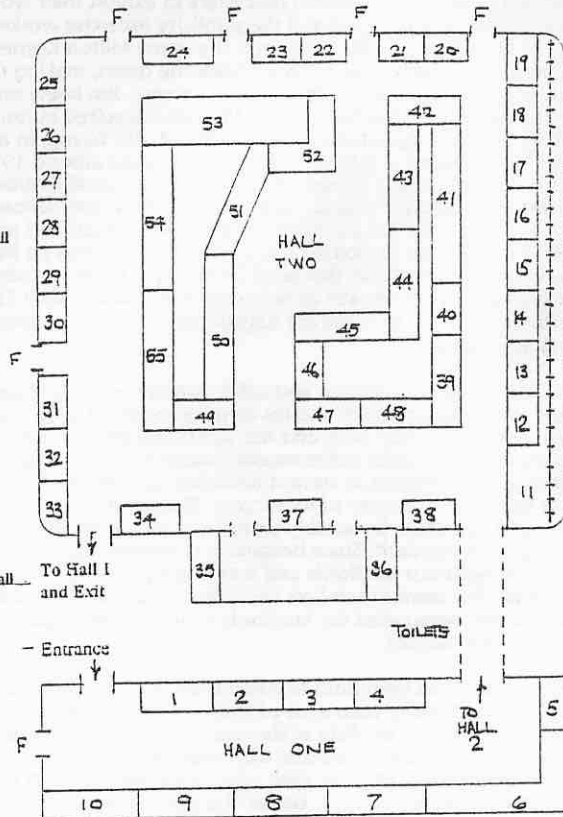
Stands No. 1 - 10 are located in Hall No. 1

- 1 Hornby Dublo layout
- 2 Triang Layout
- 3 Gauge O Tinplate
- 4 Gauge 1 Tinplate
- 5 Five Lanes
- 6 The Cwm Railway
- 7 Leighton Buzzard Narrow Gauge Railway
- 8 Bletchley - Bedford Rail Users & Oxon - Bucks Rail Action Committee
- 9 Trix Twin Layout
- 10 Lego Trains

Stands No. 11 - 55 are located in Hall No. 2

- 11 Live Steam Rides / Model Display
- 12 Red Dog Woodworking
- 13 Shire Lane Crafts
- 14 Festiniog Railway
- 15 RCTS
- 16 HMRS
- 17 Bill Ibbott - Modelling Demonstration
- 18 Jim Armstrong - Modelling Demonstration
- 19 Pendon Museum - Modelling Demonstration
- 20 Modelex
- 21 Westdale Coaches
- 22 Isinglass Models
- 23 Jeff King Model Supplies
- 24 Richards Spares
- 25 Geoff Gumble Books
- 26 Modern Traction Kits
- 27 Railway Lines
- 28 Quanton Road Models
- 29 Woodhead Models
- 30 Bletchley Railwayana
- 31 Springside Models
- 32 Ratio Plastic Models
- 33 MKMRS Information
- 34 Bletchley Motor Group
- 35 Cloakroom
- 36 Refreshments
- 37 Crownline Models
- 38 Garsdale
- 39 Tuscar Rock Company
- 40 The Gauge O Guild
- 41 Black Canyon
- 42 Camden, Maine
- 43 Alnhill
- 44 Mandelbary Central
- 45 Lower Loxley
- 46 Thomas the Tank Engine
- 47 Connoisseur / Oakville / Pocket Money Kits
- 48 Lifford Lane
- 49 BH Enterprises
- 50 Great Falls Railroad
- 51 Ronsthorpe
- 52 Bogsworth Harbour Extension
- 53 Maristow and Coldrennick Road
- 54 Willshaw
- 55 Dormans Hill

Information available from Stand No.33



JOHN SYMONS MEMORIAL TROPHY

Barbara and family have kindly presented a salver in memory of John for presentation to the best layout at our future exhibitions. This award was introduced at our 1991 exhibition and judged by the members of the local branch of the Historical Model Railway Society. This is particularly fitting as John was an active HMRS member over many years. The award will be made after the show closes on the Saturday evening and will be retained by the club for display in the club room. A replica will be awarded by the club to the winners.

BLETCHLEY RAILWAYANA & J.KING (MODEL SUPPLIES)

Bletchley Railwayana and J. King (Model Supplies) have terminated their trading arrangement to concentrate on their own core activities. Bletchley Railwayana are now offering their own mail order service and have expanded since opening by being appointed stockists of a growing range of model equipment. Recent agencies have included Dapol, Graham Farish and Bachmann.

J King (Model Supplies) will continue to offer a mail order service from their Milton Keynes address.

SWAPMEET DATE

The next swapmeet at Woughton Campus is on Sunday December 12th from 1100 - 1530. Admission is 60p Adult and 30p for children/senior citizens.

OCTOBER EXHIBITIONS

- 2 Oct Sudbury and Beaconsfield
- 9 Hillingdon and West Norfolk (Kings Lynn)
- 9/10 Mole Valley (Dorking), Warley (NEC, Birmingham) and Farnham
- 16 Tring, Bushey and Corby
- 16/17 Harlow
- 23 Chelmsford
- 23/24 Maidstone and Croydon
- 30/31 MILTON KEYNES and Colchester

There are exhibitions in November at Dunstable (6th), Banbury (13/14th) Oxford (20th), Aylesbury Railax (20th) and Watford (20/21st).

VERNEY JUNCTION IN STORE

Our Verney Junction layout has recently been placed into storage at Holne Chase School. A key to the store is held by the Chairman, who lives close by to Holne Chase.

WING BOOK FAIR

A book fair is being held at Wing Village Hall on 3rd October. Railway Books are understood to be on sale amongst others. Further details 044282 4440.

EM ON THE MOVE

Trains have been running on part of the EM Gauge layout recently. Congratulations to the EM team on their progress. A move downstairs will take place after our own exhibition, when the completed N gauge layout will move upstairs.

Profile

Jim Wood (President MKMRS)

The role of the President is an important one and is often unseen by the vast majority of members. It is a lot more involved than making a speech at the AGM and dismissing the committee and Jim works tirelessly for our cause, liaising with the landlords and advising us on a range of important subjects. The President has an equally important role at club exhibitions, working as an ambassador for the club with our guest exhibitors, the trade and the paying public. Jim has been the subject of a profile before having been caught by the Railway Modeller back in 1959 when he was a member of Norwood Model Railway Club. This article is reproduced below;

Personality Parade

Jim Wood

*Vice-Chairman
Norwood Model Railway Club*



JIM Wood specializes in OO gauge, two-rail, of course, and prefers the construction of locomotives above all. He has been fortunate to win the club's Wilson trophy three years running, a feat he modestly concludes was due to the others not trying during the period under question. He has no particular favourite region or railway; anything of a railway nature is grist to his mill.

He is a great believer in the benefits of club membership, for he considers that in this way one gets the maximum enjoyment from all spheres of the hobby.

By profession he is a technical representative, and is fortunate in this connection to be able to visit many large locomotive works and indulge in a considerable amount of railway travel.

The rest of the family—Mrs. Wood and their two sons—also enjoy the hobby; indeed, it all started in the traditional fashion, a proprietary set for the boys.

Two years after the article above had been written, Jim, Joy and sons David & Jem found themselves moving out to Bletchley following the location of Jim's employer S.S. White. The only locomotive he had managed to build during this period was his GWR King, which was named King James 1, naturally! Following the move to Bletchley, Jem build a layout which was later donated to the fledgling MKMRS in 1969 to become our first layout.

In 1968 Jim was persuaded to display three of his scratchbuilt locomotives at the Bletchley Arts & Crafts Exhibition. Amongst the visitors to the event were John and Barbara Symons and John pumped the organisers for information on the builder. The result was that John made contact with Jim and the formation of MKMRS was in the air. John persuaded other known modellers to exhibit their work utilising Colin Stacey's motive power depot and the publicity exercise worked. There was sufficient interest to start a club in Bletchley and the name Milton Keynes (then in the early stages of development) was adopted from the onset, making us one of the first organisations in the area to adopt the new name. Jim knew one or two members of the earlier Bletchley club. The formation of the club resulted in Jim restarting modelling. He built a joint layout with a friend, Bill Young, in a garage in Bill's house in Manor Road. A layout of his own followed around 1973, when following the departure of Jem to join Thames Valley Police, the small bedroom was put to good use. Along with another friend, Laurence Kirk, they commenced a pair of Coronation Pacifics. Jim currently has a centrally heated (for winter) and air conditioned (for summer) 12' x 9'shed to house his layout. In recent years he has built a Duchess, an original Royal Scot and Hall (for Jem). In the shed under construction are a pair of 55xx 2-6-2T's in 7mm. He still uses the lathe he bought for £23 in 1948 which works as accurately as ever. All locos are fully detailed, Jim only subcontracting the painting and lining.

Jim became our first Chairman and subsequently our first President in 1977. He led the search for new premises and his contacts enabled us to move into our present facilities, adding the top floor and the workshop/kitchen over the years. He is rightly proud of the clubs achievements under his leadership in the early years and maintains a keen interest in current activities. Jim told me "the stability of the club has been the mainstay of its success. The number of long serving members speaks volumes and contrasts favourably with the turnover of officers and members from his earlier days at Norwood". Since becoming President, Jim has continued to look after our interests with our landlords and was heavily involved in our workshop/kitchen negotiations. For newer members those buildings were wrecked in a fire and facing demolition. Jim persuaded the landlords to let us have a go at rebuilding them. We have not let him down!

Throughout his time with both Norwood and MKMRS, Jim has been ably supported by Joy. Joy confesses to having seen a lot of kitchens in Jim's time in the hobby and yes, Joy will once again be on duty at the end of October! Youngest son Jem is a Newbury Policeman who was also a founder club member and is still actively involved in the hobby modelling the GWR. He even persuaded Dad to build him a model of GWR No 111 "The Great Bear" as his uniform carries the same number! So if you run foul of the law down Newbury way look out for the number!

Jim worked for S.S. White before retiring as Technical Manager in 1986. He was actively involved in supplying equipment to the motor and aircraft industry and his job also brought him into contact with railways. The company supplied flexible drive for the rev. counters on W.R. Warship diesels and was also involved in the tilt mechanism for the APT, which now lives on in Sweden! Amongst other projects were Tornado aircraft and Concorde!

Jim looks forward to our exhibition. He told me "I hope we retain our professionalism at exhibitions and continue to build on the foundations that we established nearly a quarter of a century ago. If we do so then the next twenty five years will be even better than the first!".