

MODEL RAILWAY EXTRAVAGANZA

MARCH 26/27 1994

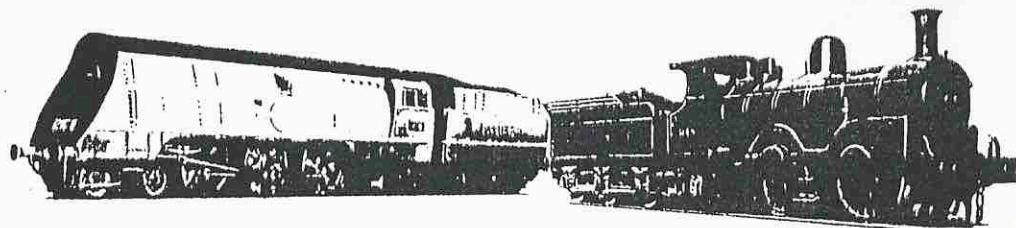
10 am - 5 pm

at

The Community Hall,
Queen Marys Hospital for Children and
Orchard Hill, Queen Marys Avenue, Carshalton, Surrey

Adults £2.00 Children £1.00

Family (22) £4.00



20+ LAYOUTS
INVITED

FEATURING

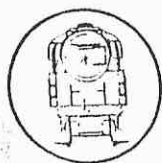
TRADE
STANDS

3 MILLIMETRE
CLUSTER

LIVE
STEAM

KIDDIES
CORNER

SOUTHERN
NICHE



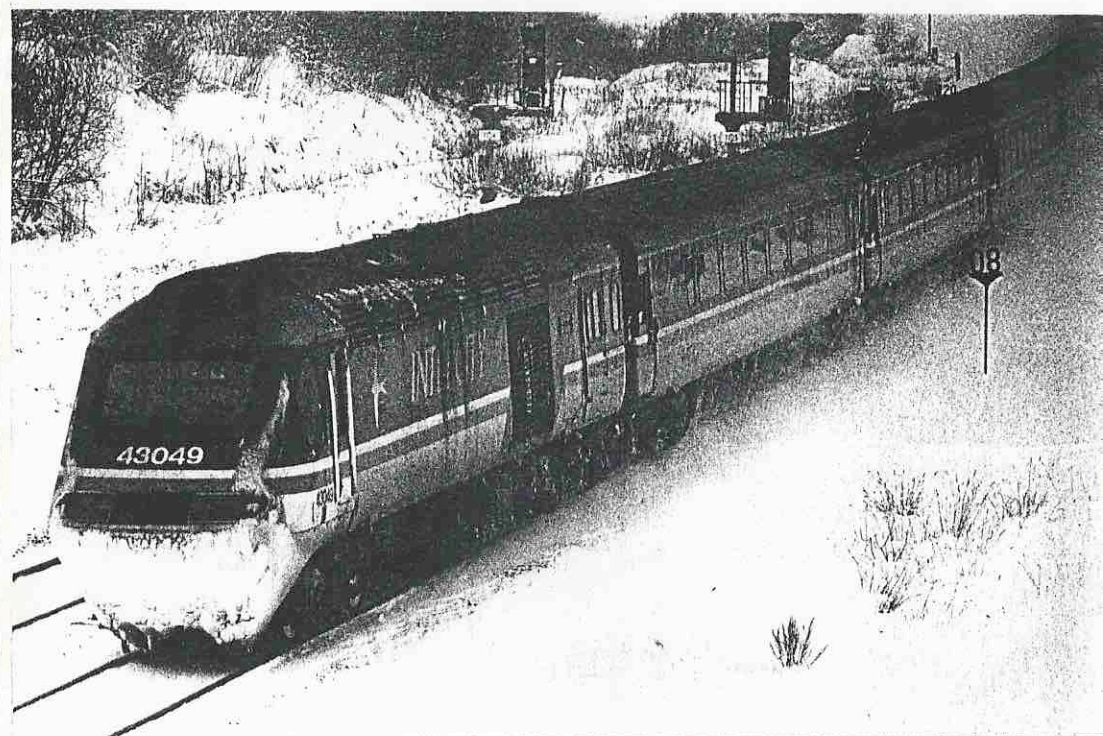
IN SUPPORT OF THE LEAGUE OF FRIENDS OF QUEEN
MARYS HOSPITAL FOR CHILDREN & ORCHARD HILL

Managed by The North Downs Model Railway Circle



No.22

January 1994



An HST weathers the storm.

Photo InterCity

Published by Dennis Lovett, Chairman, Milton Keynes Model Railway Society
c/o 4 Browning Crescent, Bletchley, Milton Keynes MK3 5AU.
Telephone: 0908 376750.

QUIZ CORNER from SAGITTARIUS

BACK TO SCHOOL

There are 30 names of "Schools" class locomotives of the former Southern Railway for you to find in this month's word square.

W G S M B Y C H A N Q Y U V B E C A D K
 N I S E B K D A E O I R T H O U W G H I
 O X N G D S V R S T R F E Y U N O X F N
 D A U C O A S R W E A Y R C S E V A T G
 E R N A H T I O K R D I Z S T P A U L S
 L M L X A E N W T F L A O G T S R Y E C
 B J C S F D S T O V E F D R S O D C B A
 M E R C H A N T T A Y L O R S M R W X N
 I A L Y L Y R W E L L I N G T O N R E T
 W E A N Q I U I P R A M S T P A O B S E
 S C T A R O F T S G N B E C A G T L K R
 G D I F C E R T B N C E V I L N H U N B
 N B P W N F V G O C I T A F U I G N A U
 I J S H E L H L V N N O L M J K I D B R
 K F O I A S G H A M G N O T P E R E T Y
 A I H T N H T U X M Z M T K H R B L H G
 N O S G L E H M A R L B S H E R B L Y V
 A R T I O R G T I G E N R U O B T S A E
 R E S F J B Z D E N T B A A L T D B R D
 W H I T G O P O I L S E N T E N U C D I
 R G R K C R A V L R B T E I M A L R I S
 E E H N B N L E U E B Y E L L O W O N N
 I V C N O E S R E D H N U R A N I H G W
 T B T S A U R T N A E M O T O H C N L O
 Q K V W U J E S U O H R E T R A H C Y D

Ardingly	Downside	Lancing	St Olaves
Blundells	Dulwich	Malvern	Stowe
Brighton	Eastbourne	Merchant Taylors	Tonbridge
Charterhouse	Epsom	Radley	Wellington
Christ's Hospital	Eton	Repton	Westminster
Clifton	Harrow	Rugby	Whitgift
Dover	Kings Canterbury	Sherborne	Winchester
	Kings Wimbledon	St Pauls	

Answers from last month

1. They were Chief Mechanical Engineers (CMEs) on the North Eastern Railway. A Locomotive Committee followed in 1884.
2. "King" class locomotives on the GWR. After January 1937 6028 "King George VI" came next; before then it was "King Henry II".
3. Stations on the old M&GNJR: Potter Heigham.
4. All members of BR class 87: 87207 City of Lichfield.
5. CMEs of the Midland Railway; Henry Fowler 1909-1923.
6. Stations on the LSWR/SR "Withered Arm"; Tower Hill.
7. CMEs of the LBSCR; R J Billinton 1890-1904.
8. Stations on the Great North of Scotland Railway; Peterhead.
9. After September 1940 it was 5071 "Spitfire"; before then "Clifford Castle". Members of GWR "Castle" class.
10. Hay; stations in Herefordshire on the GWR. Hay was the junction with the former Midland Railway.
11. All members of BR class 73; 73126 Kent & East Sussex Railway.
12. 70044 "Earl Haig". BR "Britannia" class engines.

MILTON KEYNES MODEL RAILWAY SOCIETY

The club was formed in 1969 and is an Associate Member of The Model Railway Club and a Member of The Chiltern Model Railway Association.

President: Jim Wood	Secretary: Chris Hughes	Committee: Geoff Bell
Vice President: Les Wood	Treasurer: Gordon Etherington	Fred Collins
Chairman: Dennis Lovett	CMRA Rep: Eric Bowman	Colin Catley
	Librarian: Mark Wilson	Chris Garner

Another great exhibition - but!

Our 11th Exhibition held at Bletchley Leisure Centre at the end of October was a success in so many ways. We managed to end up on the right side of the financial fence and the standard of exhibits was probably the best yet. The mix of layouts was right, the blend of trade right. Visitors liked the vintage exhibits and lots of nice things were said.

It is a pity therefore that our attendance was 50% down and our visitors fell from 3,700 to a few below 2,000. I have tried to work out why and I know others have tried to do so. There is no one reason and we did publicise the exhibition in all the usual ways. Perhaps we just need to face the fact that model railways are no longer the draw that they used to be and that life is going to have to be radically reviewed before we take the plunge again.

Chris Hughes our Exhibition Manager did an excellent job and we can be proud of all our efforts in supporting him. The catering team did their usual excellent job, the stewards were always in place and the N Gauge did something that we have never achieved before, they finished it, it not only looked good but it ran well and all weekend at that!. The days of us putting half finished non working layouts into our own shows are over and I hope that the N gauge project has given others something to aim at. We need to be professional and our layouts need no longer be the jokers of the pack. In future nothing will go out unless it works and works well. Properly resourced and properly financed, then there is no reason why MKMRS cannot live with the best.

Over the next few weeks we shall be looking very closely at exhibitions and how we react to the disappointment of losing 50% of our attendance. We have suffered a little setback on the field of play but I am determined we shall not loose the match!



Dennis Lovett
Chairman

Club Notices

SEASONS GREETINGS

On behalf of the club officers and committee I would like to wish all members and their families an enjoyable Christmas and New Year.

SPECIAL EVENTS

- 21 Dec Christmas Quiz Night. Come along for a mince pie and our seasonal evening of friendly team competition.
- 25 Jan AGM/Competition
- 22 Feb Illustrated talk by Les Wood.

ROYAL NATIONAL LIFEBOAT INSTITUTION

The lifeboats at our recent exhibition collected £45.17 for the Penlee Lifeboat in memory of our former Vice-Chairman, John Symons.

JOHN SYMONS MEMORIAL TROPHY

The first winners of this trophy were Ray and Cida Earl with their Lower Loxley layout. Our thanks to Colin Underwood and the HMRS for sticking their necks out and for judging the best layout competition. Our congratulations to the winners. We were delighted that Barbara, Joanna and family were able to join with us for the presentation.

DECEMBER EXHIBITIONS

- 3/5 Manchester
- 4 Letchworth

JANUARY EXHIBITIONS

- 8 Marlow
- 8/9 Kidlington
- 15/16 CMRA Exhibition, St. Albans

DECEMBER SWAPMEET

The next swapmeet will take place at Woughton Campus on Sunday 12 December from 1100 - 1530. Admission is 60p adult and 30p children/senior citizens.

CMRA EXHIBITION

Eric Bowman is looking for volunteers to assist with stewarding at the CMRA Exhibition at St. Albans on 15/16 January. If you would like free admission in return for some stewarding duties please see Eric as soon as possible.

SEVENTH HEAVEN FOR MODEL MAKERS

BLETCHLEY Leisure Centre echoed to the sound of railway engines and station-master's whistles over the weekend.

For the main hall was the mecca for model railway fans young and old and from all over the country, as the Milton Keynes Model Railway Society staged their seventh exhibition.

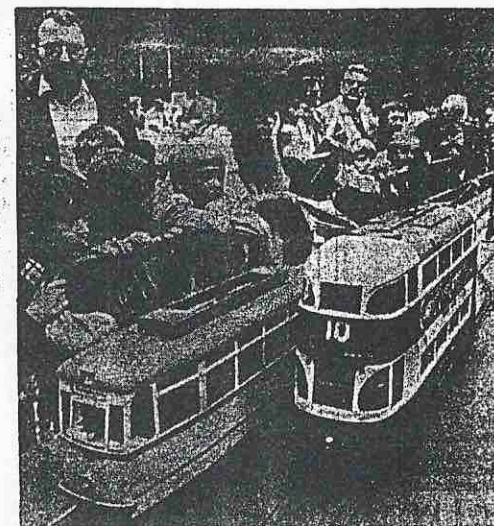
Over 5,000 people attended the two day event — one of the major exhibitions in the country — and were rewarded by glimpses of layouts that showed the history of the railways in miniature.

The fine detail — one even

had a little bird flying overhead — showed just how dedicated the modelers can be.

And for those who were looking to pick up a few tips, or even start out on a scale layout of their own, there was the opportunity to buy equipment and models to start those long hours of work.

The exhibition, first staged in 1973, is held every two years



Model trams captivate both young and old.

The December 1985 committee meeting reported back on the exhibition. It was decided to book the hall for our 1987 show. Spurred on by the lack of a modern image layout in our own show the committee received a proposal from a group of club members to build a new layout based on current operations around Gainsborough. It was agreed to support the project and 25 yards of track was made available to the project team. The project was however destined not to go much further.

At the January 1986 committee meeting the distribution of AGM notices was severely criticised. It was felt that they should have been posted rather than distributed via the club room as several members had left them lying about!! Fortunately the publication of MKMRS News has avoided this problem for the past couple of years!! See page three for details of the 1994 AGM!

To be continued....



PASS

Name _____

Stand Number _____



EXHIBITOR

In the beginning (Part 20)

On August 17 1985, the club took part in the Wolverton Works Open Day. Several layouts were exhibited in the main works canteen, giving us a good opportunity to publicise our forthcoming 7th Exhibition.

The gauge O Guild held their second Bletchley Convention on 14/15 September at Bletchley Leisure Centre and the event was again a large success.

The Open University used Dennis Lovett's Lulworth Cove O gauge layout and Les Wood's fiddle yard for filming models for a programme being made for foreign television at the OU Television Centre. George Hinchcliffe introduced some splendid models on to the layout for the cameras and the operators (DAL and LVW) had to be on their toes.

On the 21 September Don Pigott's tram layout represented us at the Small Arms MRC Exhibition at Enfield whilst on 19 October, Verney Junction appeared at Raillex, Aylesbury.

Our 7th bi annual model railway exhibition took place on 26/27 October 1985 when some 5,000 visitors attended Bletchley Leisure Centre for the second of our two day shows. Layouts included; Port Erin (Dale Cotton), Dursley (Jim Guthrie), China (Peter Jarvis MKMRS), Llanastr (Rodney Hall), Shaftesbury (Martin Finney), Leighton Buzzard (Dave & Shirley Rowe), Trix Twin (John Hatton MKMRS), South Beds Trams (Leo Taylor), Watlington (Dave Fearn MKMRS), N Gauge (MKMRS), Wednesbridge Trams (Don Pigott MKMRS), Coombe Mellin (Ipsley Circle), Chateaux d' Oex (Ernie Hancock MKMRS), Alverton (MKMRS), Woodford/Agar Town/Lulworth Cove (Les Wood, Gordon Eckersley, Dennis Lovett MKMRS), Uppingham (Peter Simmerson), Porth Nevin (Ray Arnold), and Petherick (Barry Norman).



There was the usual mix of suppliers including Ray Rippon, Alan Gibson, Ratio, Oakwood Press and Bournemouth Model Centre. The local press were impressed and so were the visitors. Several of the layouts appearing were well known in the magazines and the Leighton Buzzard layout of the Rowe's was a good local attraction although it came from South Devon!! The club N gauge layout was the only minus point and made its only exhibition appearance. We all learn't a lot from it although N gauge remained a taboo subject and was avoided until the Mandlebury project was started two years ago. The only criticism was the lack of modern image and the committee promised to do something about it for the 1987 show!

Notice of Annual General Meeting

In accordance with the requirements of the club rules, I am giving in excess of the 21 days notice needed, to notify you that the Annual General Meeting of Milton Keynes Model Railway Society will take place on **Tuesday 25 January 1994 commencing at 8pm.**

The nomination form for club officers and committee positions will be circulated in due course and will be available in mid - December. Further copies will be available in the club room and should be completed before the AGM commences and handed to myself before the start of the meeting.

Chris Hughes
Secretary
October 15th 1993

Competition Rules

As usual the club modelling competition will be run in conjunction with the Annual General Meeting, so finish of your projects in good time.

The classes of competition will be as follows:

- 4mm or less Scratchbuilt locomotive (For G Barratt Memorial Trophy)
- 7mm or more Scratchbuilt locomotive (For T. Wilson Trophy)
- 2mm or less kit/modified R.T.R. locomotive (For P & D Marsh Trophy)
 - 4mm or less kit/modified R.T.R. locomotive
 - 7mm or more kit/modified R.T.R. locomotive
- 4mm or less Scratchbuilt rolling stock
- 7mm or more Scratchbuilt rolling stock (For The Moorcroft Shield)
- Scenic items (to any scale) (For Rail Trophy)

The rules of the competition state that:

1. No entry shall have been entered in a previous club competition
2. The person entering shall be a paid up member of the club at the time of entry.

C. Hughes, Secretary.

Profile

Colin French

Colin French was born into a railway family in a railway house in Ledsam Street, Wolverton in 1943. His father was a French Polisher in Wolverton Works and his Grandfather a bricklayer with the artisan gang in the Works. On his Mothers side, his Grandfather worked in the LMS Gas Works in Old Wolverton Road. The family later moved to the house next door which had a large garden running down to the Goods Shed which was well served by wagon turntables. From an early age, Colin watched the horse shunting in the goods yard and the saddle tanks at work in Wolverton Works.

When Colin was a little older, he spent considerable time trainspotting at Wolverton Station next to Platform 5, the platform serving the Newport branch. Here "Newport Nobby" waited for its passengers and in the early days the locomotive was a LNWR Coal Tank and later an Ivatt 2-6-2T. Other locos appeared on this turn ranging from a Stanier 0-4-4-T to a Standard 2-6-4T.

Colin received his first train set at the age of 9 which was a Hornby Dublo 3 rail set which was expanded each birthday and Christmas.

Colin attended Wolverton Technical College in Church Street and latterly the Radcliffe School when the Technical College and Grammar School merged. He left school at 16 and started work in the British Railways Signal & Telegraph Department at Bletchley as an apprentice. Colin was actually serving with the S & T linesman at Leighton Buzzard when the Great Train Robbery occurred and was responsible for the signals at Sears Crossing although, he insists that the Police did rule him out of their enquiries at a very early stage! His love of block bells and the obscure bell codes known to only a few close friends obviously stem from this time! Colin attended the then new British Transport Commissions Work Study Centre at Swanbourne which he insists is far more complicated than studying people working!

All railway activity was suspended when he met future wife Margaret who hails from Newton Blossomville near Olney. He joined the Prison Service and left North Bucks and after marrying Margaret in 1966, lived in Brixton for 3 years whilst working in the nearby residence of that name. During this time he began modelling in OO gauge again and showed particular leanings towards the Somerset & Dorset and Joint Railway. They have three daughters Julie, Sharon and Debbie which Les Wood insists were named after Colin's favourite railway as their initials appear as SDJ. Colin denies this!

The French family moved back to New Bradwell in 1971 after Colin joined Bucks Ambulance Service and was stationed at Newport Pagnell. He joined MKMRS at Holne Chase and eventually became Vice-Chairman. He also acted as joint Exhibition Manager with Les and brought the name of MKMRS into disrepute on several occasions. Promotion to Suffolk Ambulance Service in 1978 has resulted in Colin being their current Assistant Chief Ambulance Officer. The move away resulted in Colin standing down as Vice-Chairman and becoming Honorary Member No.2, an honour still proudly retained.

Colin changed to O gauge modelling following several years of nagging from Les Wood and his interests now lie mainly with light railways, although he still has a yearning for the S & D.

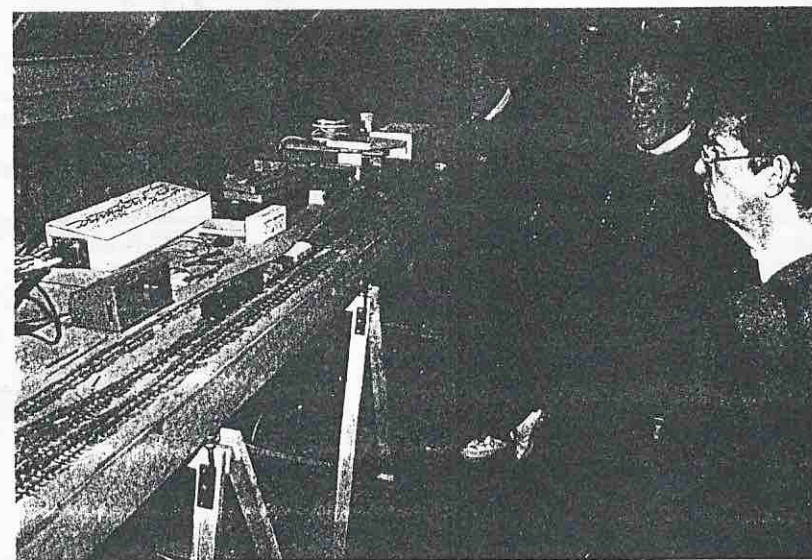
The arrival of a grandson, Ben, four years ago enabled Colin to become an expert on Thomas the tank engine and his friends. Colins latest layout reflects these activities and his layout at our recent exhibition was very popular as Colin enthralled the young visitors with his tales. Needless to say Grandad Colin is held in high esteem by Ben who is being properly educated in all matters flanged wheel.

Despite living in Suffolk, Colin still feels very much part of MKMRS and enjoys returning home for our exhibitions and other events. We look forward to having both Colin and Margaret at our 25th Anniversary celebrations. We might even persuade Colin to tell one of his many wonderful stories providing he avoids all reference to the current Chairmans stag night!

Another victim next month.

A NEW RAILWAY FOR MILTON QUAY(S) PART 2

By Chris Lester



Bernard, Tim and Colin witness the running of the first train on the new EM gauge layout. The layout has now moved downstairs so that the complete layout can be erected.