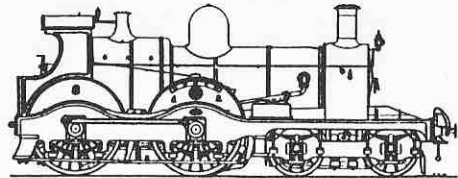
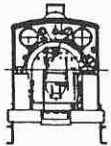


LANGLEY









GAUGE 'O' GUILD

Approved
MODEL RAILWAY SHOW



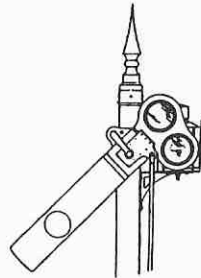
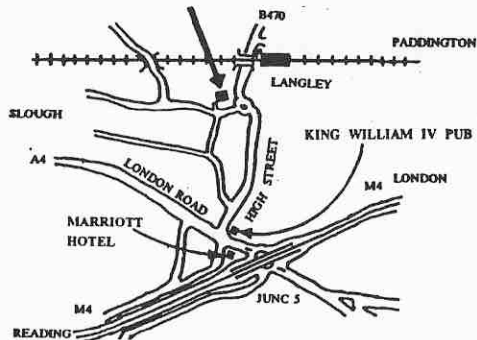
SUNDAY 4TH DECEMBER 1994

-  WORKING LAYOUTS
-  TRADE STANDS
-  TEST TRACK
-  LIVE STEAM
-  BRING & BUY
-  HOME MADE REFRESHMENTS

LANGLEY COMMUNITY CENTRE

LANGLEY ROAD, JUST OFF THE A4 NEAR SLOUGH

DOORS OPEN 10.00 am - 5.00 pm



ADMISSION £2.00
Family discount

GUILD MEMBERS
and OAPS £1.50

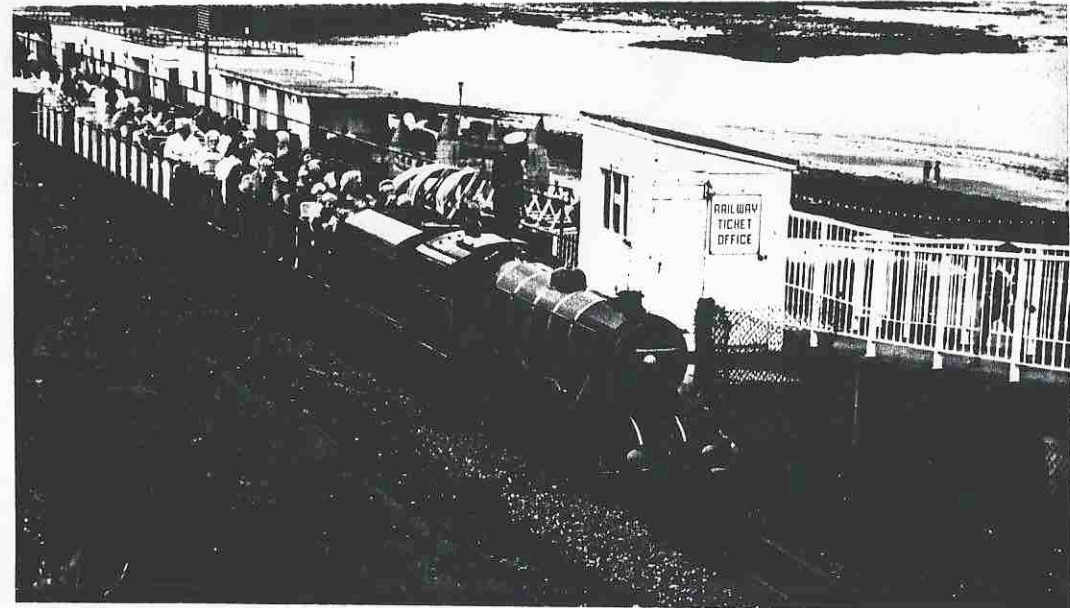
8TH ANNUAL WEST LONDON GROUP EXHIBITION



MKMRS NEWS

No. 28

JULY 1994



Summer Holidays at Scarborough

Photo Dennis Lovett

Published by Dennis Lovett, Chairman, Milton Keynes Model Railway Society
c/o 4 Browning Crescent, Bletchley, Milton Keynes MK3 5AU.
Telephone 0908 376750

The Model Railway Club

KEEN HOUSE, 4 CALSHOT STREET, LONDON, N1 9DA
Founded 3rd December 1910



THE MODEL RAILWAY CLUB

The Model Railway Club was founded in 1910 and is believed to be oldest such organisation in the world. Since the 1960's the club has been based in its own purpose built headquarters near King's Cross Railway station in London, named Keen House after the club's famous chairman, G.P.Keen.

The club has been renowned in the past for its project layouts and currently has the following layouts in the course of development:

New Annington : OO gauge Modern Image

Copenhagen Fields : 2mm finescale; approaches to King's
Cross in the days of steam

Happisburgh : O gauge steam layout set in East Anglia
and a new HO layout based on American practice.

Based at Keen House, is an extensive library which the membership can be justifiably proud of. The library is available for browsing and borrowing most meeting nights.

The club also boasts a lounge area in which test tracks are erected providing scope for operating models in all the popular gauges. There are also facilities available to provide light refreshments. It is to this area that the membership congregates on Thursday nights from 19.00 to discuss their latest models or to listen once a month to a lecture on a railway related subject.

In addition to being the Headquarters of the MRC, Keen House is also used by a number of other organisations to hold their meetings.

The Model Railway Club also organises the prestige Easter Exhibition, IMREX in Central London.

If you wish to pop along to one of the Thursday night meetings as either a prospective new member or as a visitor from an affiliated club, you will be more than welcome.

Further details of the Model Railway Club can be obtained from:

The Hon Secretary
The Model Railway Club
Keen House
4 Calshot Street
London N1 9DA

MILTON KEYNES MODEL RAILWAY SOCIETY 25th Anniversary year

President	Jim Wood	CMRA Rep	Eric Bowman
Vice President	Les Wood	Committee	Geoff Bell
Chairman	Dennis Lovett		Chris Garner
Vice Chairman	Fred Collins		Chris Lester
Secretary	Chris Hughes		Colin Jamieson
Treasurer	Gordon Etherington	Librarian	Mark Wilson

A walk through the town

With the car out of action and being attended to by our friendly mechanic, I recently had the pleasure of walking from my home to the clubroom through Bletchley.

Whilst this was nothing unusual, it was in fact a reverse journey to those I had made in our early days, when I walked (or cycled) from Fenny Stratford to Holne Chase.

The only difference between those days and this, was the lack of interesting shop windows to look through. Interesting mean't model railway or model shops in those days, where Bletchley's main thoroughfare was far more interesting than it is now.

No wonder model railways are in decline in the toy market, when you realise just how much things have changed. Here are just some of Bletchley's former toy and model retailers who have disappeared in recent years.

* Neals - opened in 1946 and located on the corner of Queensway and Oxford Street (now Weigh & Save), they were for many years the premier model railway stockist in Bletchley being dealers for Hornby O, Hornby Dublo, Triang Railways, Trix and GrahamFarish. They also had a shop in Hockliffe Street, Leighton Buzzard and Central Milton Keynes from its opening in 1980. Run by MKMRS member Ted Neal, the Bletchley shop was often an extension of the club room when new items arrived from the manufacturers. Ted now runs a toy shop in Lake Street, Leighton Buzzard.

* Taylor & McKenna, latterly Beatties, ran a shop from the opening of the Brunel Centre in 1973. This closed earlier this year. The model department was at

one time mainly model railways although by the time of its closure model railways played a very small part.

* Sports & Games were located in the block of shops by the Bletchley Arms. One of their two windows was usually full of diecast cars, kits etc. They had stocked Hornby at one stage as I can remember seeing some of the old O gauge red boxes on the shelves. No doubt Stan Pennington beat me to them! Closed at the end of the 1970s.

* Harringtons Handicrafts had a shop round the corner from the existing club room (now the DIY shop). I can remember viewing the Kitmaster models on my way to school and all those balsa wood airplanes and boats. Closed as a handicraft shop in the mid 1970s.

* Axfords, the paper shop in Fenny Stratford (the one that's still there opposite St Martins Church) was a Triang stockist. My first train set came from there. In the mid 1970s they still sold Wrenn

Other places who stocked railways at one time were Woolworths (Playcraft) which was managed for many years by MKMRS member Eric Preston and the paper shop in St Marys Avenue, who also sold Triang!

Today there is not one shop in Queensway selling model railways, come to think of it there is a proper toy shop either!

Thank goodness we have a model railway shop at St. Marys Avenue. At least it makes going for the Saturday paper that more interesting.

Dennis Lovett
Chairman

Club Notices

CMRA Convention Saturday 9 July 1994

This event will be held on Saturday 9 July at Beaconsfield School. Commencing at 1015, the day will include a talk on resistance soldering by Mike Gray, a talk on Plasticard buildings by Ted Coughlan, and Humour on the footplate by Keith Catchpole. Participating clubs are also expected to demonstrate their abilities.

Member clubs will also have a stand and demonstrate their activities. We hope to work on a section of the EM at the event.

Eric Bowman has a spare ticket. If you would like to attend please see him as soon as possible.

Swapmeet dates

Swapmeets will take place at Woughton Campus on the following dates;

18 September
11 December

Opening times are 1100 - 1500. Admission is 60p, child/senior citizens 30p.

Club Dinner 15 October 1994

The 25th Anniversary Club Dinner will take place on 15 October at the College in Sherwood Drive, Bletchley. Please see elsewhere in this issue for menu etc.

Further details - Please see Chris Hughes

Library

Opening Hours

Tuesdays
8 - 9 pm

A box is provided for the return of items at other times

QGM - Tuesday 26 July

A short QGM will take place on Tuesday 26 July commencing at 8pm in the club room.

Bletchley Park - D Day Celebrations

Thanks to Stan Pennington, Brian Barnes and John Hatton for providing the vintage wartime layouts that run at the special event in June at Bletchley Park.

Thanks also to Les Wood and Fred Collins for assisting with manning at this event.

We know our efforts were well received.

25th Anniversary Club Dinner Saturday 15 October 1994

at the "Bleccasslea Room",
Sherwood Drive College, Bletchley

Menu

Homemade vegetable broth
or
Egg mayonnaise
or
Fruit Juice

Roast Sirloin of Beef with Yorkshire pudding
Pommes de Terre du Jour
Bouquetiere de Legumes

Peach Melba
or
Sherry Trifle
or
Black Cherry Cheesecake

The price of £14 per head includes a glass of non-alcoholic punch on arrival and 2 glasses of wine or fruit juice with the meal. Further details will appear in future issues, a menu selection form will also appear shortly

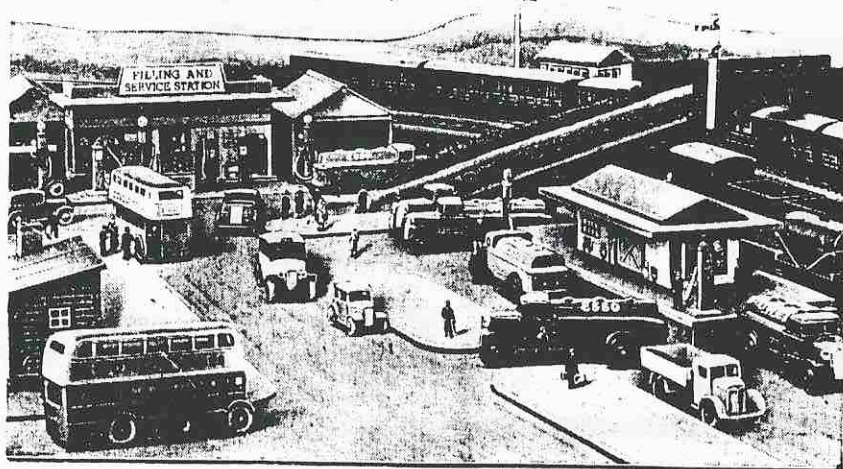


MECCANO DINKY TOYS HORNBY TRAINS DUBLO TRAINS

If you are still waiting for your share of Meccano and Dinky Toys, you will be glad to know that your dealer will have more during the coming weeks.

Obtainable **ONLY** from Meccano dealers.

MECCANO LIMITED - BINNS ROAD - LIVERPOOL 13



In the beginning - Part 24

At the June 1987 Committee meeting, it was reported that the team producing the Gainsborough OO modern image layout had "thrown in the towel". Work was progressing on the exhibition, Les Wood reported that the Hampton South layout had been successfully secured for the event. The committee reluctantly had to cancel the outing which was to have been by train, as numbers had dwindled to just 12. On June 6, the Lulworth Cove layout attended the Gauge O Guild Exhibition at Camborne, Cornwall. The team were once again most welcome and were based at John and Barbara Symons Penzance house.

Alvretton attended the Great Central Society celebrations at Woodford Halse on 4 July. The committee meeting noted that a new pump had been fitted at Holne Chase and that flooding should be no more! (They were wrong as those of us who paddled around last year well know!).

The September meeting was not unnaturally concerned with the forthcoming October exhibition. Several members attended the Gauge O Guild Convention in Blackpool on 12/13 September. Gordon Eckersley was unable to attend due to illness but his layout did, as part of the hastily joined together layouts of several members, giving the GOG its first taste of modular layout construction. Nearby were the Alvretton team thus ensuring that the MKMRS presence was well to the fore.

Alvretton also attended the Raillex event at Aylesbury on 3 October.

The MKMRS Exhibition took place over the weekend of 24/25 October and was once again most successful.

The November committee meeting reported

that a loss had been made on the guide and although it was too early to have any exact figures, indications were that the event had once again been to the clubs satisfaction. The committee had received a letter from Geoff King Models, formerly of Brownhills, West Midlands, who had moved into the area and were actively seeking retail accommodation. Phil Gilbert presented an evening of slides on 24 November.

On the 6 December, Austin Daly's Tynemouth Central made an exhibition at Austin's former club, Darlington!! On the same day, the Alvretton team attended the Langley GOG event.

The December committee meeting thanked Les Wood for his leadership over the past years. Les had recently announced his wish to stand down having been elected Vice Chairman of the Gauge O Guild. He has since served them as Chairman and will shortly conclude his term as their President.

As a result, your current Chairman was appointed at the AGM in January 1988 and this would therefore seem to be the logical place to conclude this look at our past. I do not feel that it is my place to record the past few years, I hope that some future MKMRS member will do that in the years to come.

Almost 20 years have been recorded in this series over the past 24 or so months. Whilst this may have been of more interest to older members, I hope it will have given those who have joined us more recently the opportunity to have seen where we have come from.

Dennis Lovett
Chairman

QUIZ CORNER from SAGITTARIUS

STATIONS

Earlier word squares have concentrated on locomotive names. This month we are trying something different. We take a look at the railway's fixed assets, stations. There are 36 station names drawn from all parts of Great Britain; some of them remind us that the railway was just down the road but rationalisation (and, more recently, other nasty long words) has changed what appeared to be well established features in the landscape.

I L L E N A L L E R M T H E T F O R D
 D A A S E S S C A L Y G N D E S T D I
 B K B R C O F F H N I E W O T S D A P
 A C P B K T O T Y E X M O U T H I P E
 M I D F O R D S O O L E C R N E F L M
 N R N S E T U R H L E F O B Y D N A S
 D G L A M I S O A E E K H T A B M I S
 X A L O W N K B U T T M U A S T A R K
 A C D M J E D B U R G H A E M U L H O
 Y T N A O N L L E R F O R F A R L S U
 N O R M A N T O N G Y S A A P M A C S
 N P D T K E A A E S V S S I K H I L U
 E G A N H P F C A R I R Y E L H G I H
 V B R O A F N O V D E S I B N D S F R
 A O E S M A E K L K N C E N I V E T F
 G S P R Z R E V O S L O B N G S N O G
 R C Y N S N S P R X I B T W M W G N A
 E N E S I E L S Q O E I D R A R O D N
 B P F E R P H L U L N K N T E U J O C
 A D D E R B U R Y G B T F S O V C W D
 H P T L O D S A A N E U N I T N L N C
 H T E I C C I R C E Y T S E D O L O G
 E S C K R A D L E T T F L A V M W C W



Abbotsbury
 Abergavenny
 Adderbury
 Bath
 Bat and Ball
 Bolsover
 Chelfham
 Clifton Down
 Criccieth
 Cwm
 Dinting
 Exmouth

Forfar
 Fyvie
 Glamis
 Highley
 Instow
 Jedburgh
 Kineton
 Llanelli
 Mallaig
 Midford
 Normanton
 Oakham

Padstow
 Penzance
 Quay
 Radlett
 Rhu
 Ringwood
 Sandy
 Thetford
 Usk
 Ventnor
 Wolverton
 Ynys

Answers to last month's Quiz

1. Tring: Denbigh Hall: stagecoach.
2. Midland.
3. Cheddington-Aylesbury: Leighton Buzzard-Dunstable North: Newport Pagnell.
4. Manchester, Sheffield and Lincolnshire Railway, later Great Central Railway.
5. London Road, GNR; Abbey, LNWR; City, MR.
6. Galatea and Mayflower.
7. Midland and Great Northern.
8. Verney Junction.
9. Stratford upon Avon and Midland Junction Railway; Oxford and Aylesbury Tramway; Oxford, Worcester and Wolverhampton Railway.
10. The Harpenden to Hemel Hempstead branch and the Blisworth to Stratford upon Avon line.

WARLEY NATIONAL MODEL RAILWAY EXHIBITION

at the NEC

15/16th OCTOBER 1994

- ★ 50+ Top Quality layouts from 'Z' to 'G'
- ★ 100 Specialist Trade Stands
- ★ 30 Preservation/Specialist Societies
- ★ Demonstrations, Live Steam Locos
and much, much more

THE BEST DAY OUT THIS YEAR, AND ALL FOR A FIVER!*

**Concessions and family tickets also available*

