



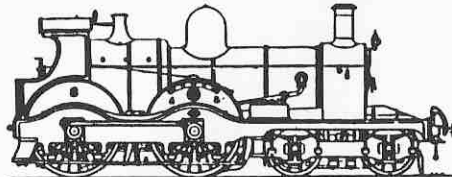
LANGLEY



GAUGE 'O' GUILD

Approved

MODEL RAILWAY SHOW



SUNDAY 4 TH DECEMBER 1994



WORKING LAYOUTS



TRADE STANDS



TEST TRACK



LIVE STEAM



BRING & BUY

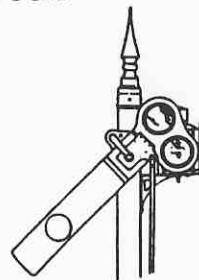
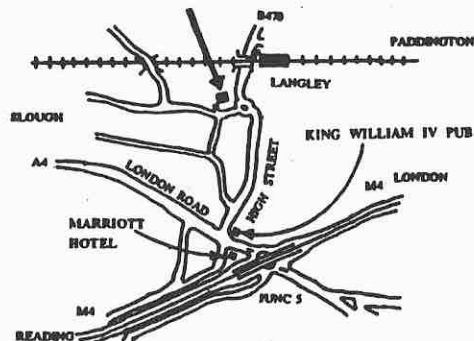


HOME MADE REFRESHMENTS

LANGLEY COMMUNITY CENTRE

LANGLEY ROAD, JUST OFF THE A4 NEAR SLOUGH

DOORS OPEN 10.00 am - 5.00 pm



ADMISSION £2.00
Family discount

GUILD MEMBERS
and OAPS £1.50

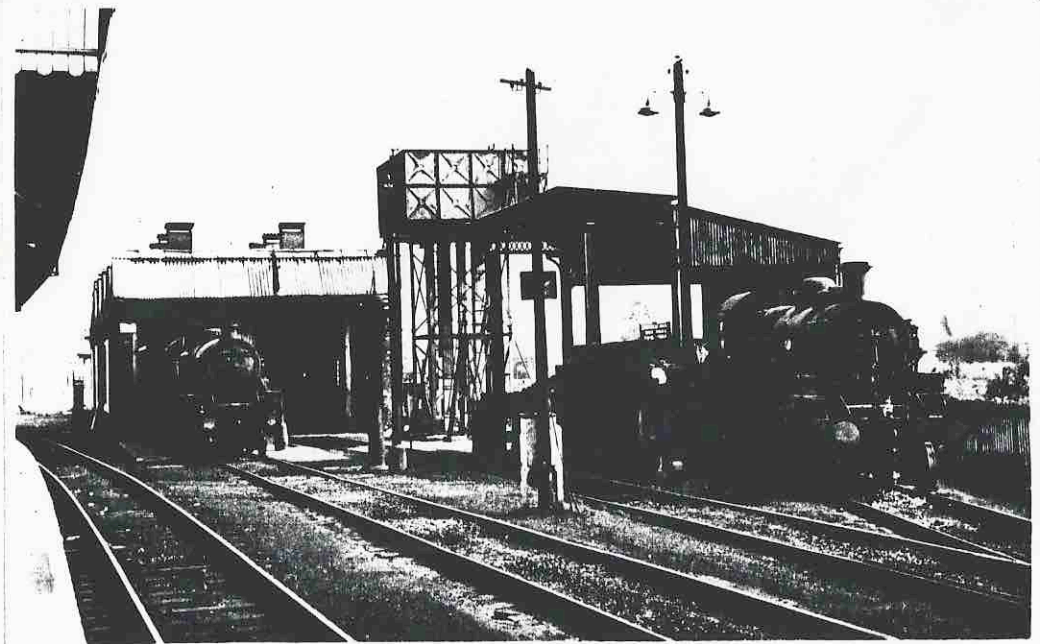
8TH ANNUAL WEST LONDON GROUP EXHIBITION



MKMRS NEWS

No. 30

SEPTEMBER 1994



Aylesbury depot in steam days

Published by Dennis Lovett, Chairman, Milton Keynes Model Railway Society
c/o 4 Browning Crescent, Bletchley, Milton Keynes MK3 5AU.
Telephone 0908 376750

TELEGRAPHESE

British railways did not want their staff sending long messages over the system when ordering wagons for a particular load so they devised a sort of shorthand to describe the wagons. The best known lists are those used by the GWR and BR(W), for example a GWR goods agent would not have ordered "a 25ft 6in well wagon for agricultural implements, etc."; he would have requested a "Loriot C". This wordsquare has a selection for you to find and includes some LNER ones. Good hunting!

C P A K L K Q G F D S J P R L G E G G
 R N O H P I S W A V Y Z G X E N H I R
 A L R L I Y G O A T F O R P L J R C G
 C D E B A B T B O O N H G A D F L Y N
 P O A T T N C R O C O D I L E O W T O
 D V L S O O T A C T C O A R P O T A M
 V L O H B I T O N A M A T C H W G N A
 E H T O B A N T E T O N Q U E C O K E
 S Y L V I F D A M O E A Y H L U N N B
 P A M A L R I N L V Q M A C K I B I M
 C O R A L T G O C U K R H D N A R M R
 L S T P Q J T T I T M Y I B N A G S J
 M I N C H C G E D A D I L A O X I A S
 U K I O H L T I U R F T N R L P E G M
 E S U D I A F Z A O W A T A H T L O P
 B W Q L L K N G C R B G P C A K T G M
 G L S P Y T H M E B O M S A Y C E H A
 L E O A F D A C H B F V U Y Q N E A C
 R B Y A Q U T H Y T I F G N O L B P A
 A F S N T A V R E W S N L D E O A B W
 E C H O N E L L O P H C E A S L H U W
 L G Y K W T R O F O C G I Y E C L D B
 A E R I A T R I C L L O A L O D N O G

- | | | |
|---------|-----------|------------|
| Aero | Coral | Macaw |
| Ale | Crocodile | Match |
| Alumina | Damo | Mink |
| Asmo | Egg | Pollen |
| Banana | Fruit | Python |
| Beetle | Gadfly | Quint |
| Bloater | Giant | Rectank |
| Bofish | Gondola | Siphon |
| Boplate | Hydra | Ventrebrig |
| Conflat | Longfit | |

Answers to last month's Quiz

- | | |
|--|---------------------------------------|
| 1. (c) SR Schools - 918 Harrow | 6. (c) BR Class 42 - D827 Kelly |
| 2. (a) GWR King - 6027 King Richard I | 7. (c) BR Class 42 - D814 Dragon |
| 3. (d) LNWR Jubilee - 1940 Trafalgar | 8. (c) LNWR Jubilee - 1931 Agincourt |
| 4. (b) LMS Royal Scot - 6169 Boy Scout | 9. (a) GWR Atbara - 3378 Khartoum |
| 5. (d) SR Schools - 909 St Pauls | 10. (b) GWR King - 6028 King Henry II |

MILTON KEYNES MODEL RAILWAY SOCIETY
 25th Anniversary year

President	Jim Wood	CMRA Rep	Eric Bowman
Vice President	Les Wood	Committee	Geoff Bell
Chairman	Dennis Lovett		Chris Garner
Vice Chairman	Fred Collins		Chris Lester
Secretary	Chris Hughes		Colin Jamieson
Treasurer	Gordon Etherington	Librarian	Mark Wilson

The changing face of history

Future railway historians/modellers are going to find themselves in a right mess. I see from recent press cuttings that the Managing Director of Waterman Railways, has authorised his locomotives to be painted in LNWR lined black which is better known to many of us as the livery carried by many BR steam locomotives up until August 1968.

Mr Waterman has also bought the company names of the London & North Western Company and the London, Midland & Scottish Railway Company, therefore becoming Chairman of each.

Waterman Railways is the first of the new companies to emerge. Pete Waterman is of course known to modellers, being behind M & L, the Coventry based kit makers at one time and a collector of fine model locomotives. He has also purchased a large number of full size diesels and coaches over the past few years. A former Wolverhampton Stafford Road apprentice, Pete Waterman has made his fortune in the pop business and has recently purchased half of Flying Scotsman Enterprises and more recently the former InterCity Special Trains operation.

The application of LNWR livery to Class 47 diesels and coaching stock has caused a rush of criticism, with many declaring how could he preserve rolling stock in non authentic liveries. Mr Waterman of course is now in the

real railway business and as the new owner is quite at liberty to paint them in any livery he so wishes.

Whilst all the proposed new names and liveries give the railway press a great deal of fun, they do present the modellers of the modern image scene, with a whole host of problems!

Our own Mandlebury layout made its exhibition debut last October as an up to date piece of the modern railway. Now it is decidedly out of date. Even those who work in the railway industry cannot work out what's happening from one day to the next, so what strategy can Modern Image modellers adopt!

To keep up to date is going to mean heavy investment in airbrushes, transfers and paint stripper. Manufacturers, particularly in N gauge, are hard pushed to introduce new liveries. Only OO manufacturers Lima, seem to be on the ball.

So there we have it. Do we try to keep up to date or do we become members of the HMRS? Only time will tell!



Dennis Lovett
 Chairman

Club Notices

Swapmeet dates

Swapmeets will take place at Woughton Campus on the following dates;

18 September
11 December

Opening times are 1100 - 1500. Admission is 60p, child/senior citizens 30p.

Club Dinner
15 October 1994

The 25th Anniversary Club Dinner will take place on 15 October at the College in Sherwood Drive, Bletchley. Please see elsewhere in this issue for menu etc.

Booking forms and further information from Chris Hughes

Transport Day
Stacey Hill Museum
Sunday 21 August

The Milton Keynes Museum of Industry and Rural Life is held a transport day on Sunday August 21.

The club N gauge layout Mandlebury was in attendance and ran well. Chris Garner was ably supported by Jeff Mathie, Bruce Garwood, Ken Wiggins and Dennis Lovett.

John Hatton, assisted by Fred Collins, ran his Trix Twin layout.

The Museum had a good display of railway items, not to mention considerable information and rescued tram cars from the Wolverton & Stony Stratford tramway.

Library

Opening Hours

Tuesdays
8 - 9 pm

A box is provided for the return of items at other times

QGM -
Tuesday 26 October

A short QGM will take place on Tuesday 25 October 1994 commencing at 8pm in the club room.

Club Library

Mark has a list of all the magazines not in our library at the present time.

If you are thinning out your own collection of magazines both prototype and model, then Mark is waiting to hear from you.

Now that the library reorganisation is complete, Mark is looking at those items which members have had on loan for some time. Please check at home and return a.s.a.p.



The BEDFORD TO BLETCHLEY
RAIL USERS ASSOCIATION

and the

LEIGHTON BUZZARD
Youth Theatre

presents

**Re-Open
the Line**

by Andy Collier

After seeing the highly successful first production of "Re-Open the Line" in May 1990, the Bedford to Bletchley Rail Users Association is delighted to be sponsoring a revised version of the musical play by the talented youngsters of the Leighton Buzzard Youth Theatre.

The play is based on a fictional, but highly imaginative, attempt by the rail users of Winslow to prevent Dr. Beeching closing down the Oxford - Bletchley - Bedford - Cambridge railway line in the 1960s. The play is revived at a very important time when the remaining tracks west of Bletchley are officially "mothballed" as far as Claydon and beyond see only one train per day between there and Bicester. With the new railway ownership confusing the re-opening campaign the play will form an excellent platform from which to step up the campaign to link the Bedford to Bletchley line back to Oxford.

PLEASE SUPPORT THE ASSOCIATION, AND THE MEMBERS OF THE YOUTH THEATRE BY BOOKING NOW FOR ONE OF THE PERFORMANCES AT A VENUE NEAR YOU.

Both performances will begin at 7.30pm with an "updating" colour slide show by the association's Chairman and the evening will conclude at approximately 9.35pm. There will be an interval with Refreshments and association sales stand available.

Tickets are now available for just £2.50 adult and £1.50 children and Senior citizen. IF YOU BOOK NOW USING THE FORM BELOW WE ARE OFFERING A REDUCTION OF 50P ON EVERY SEAT BOOKED!

Send the completed form with monies payable to "Bedford/Bletchley Rail Users" to: "SHOW", c/o 23 Hatfield Crescent, Bedford MK41 9RA. Please enclose an S.A.E.

Name (please PRINT).....Mr/Mrs/Ms

Address..... Postcode.....

Please send me the following tickets for the show at - (delete below as applicable) -

St. Martin's Hall, Queensway, BLETCHLEY - Saturday 3rd September

Memorial Hall, High Street, WOBURN SANDS - Saturday 24th September

..... Adult Child (ages up to 17) Senior Citizen

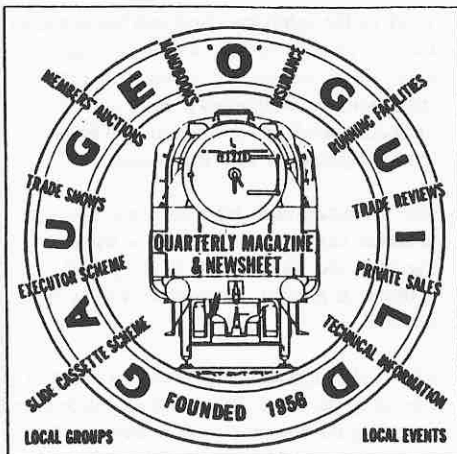
Please find enclosed cheque for £..... and an SAE. Signature.....

CMRA EXHIBITION DIARY

September 1994	1/2	Market Deeping
	8	Sudbury
10	8	Corby
10/11	8	West Norfolk, Kings
17		Lynn
17	8/9	Croydon
24/25	8/9	Farnham
	8/9	Mole Valley, Leatherhead
October 1994	15/16	Beckenham & West Wickham
1		Beaconsfield
1	22	Tring
		Soar

Further details in model press

Gauge O Guild GUILDEX '94



TELFORD

SATURDAY 10th SEPTEMBER 1994

10.00 am to 5.00 pm

SUNDAY 11th SEPTEMBER 1994

10.00 am to 5.00 pm

TELFORD EXHIBITION CENTRE
TELFORD, SHROPSHIRE

(follow signs to Exhibition centre)

At least 15 7mm Scale Layouts
Modelling Demonstrations
Specialist Traders — Plus Much More

Members £3.00

Non Members £6.00 (includes family)

For information on joining the Guild
please send S.A.S.E. to:

THE ENROLMENTS OFFICER, GAUGE 'O' GUILD, LTD.
HILLCROFT HOUSE, NEW ROAD, TALYWAUN,
PONTYPOOL, GWENT NP4 7QY

25th Anniversary Club Dinner Saturday 15 October 1994

at the "Bleccasslea Room",
Sherwood Drive College, Bletchley

Menu

Homemade vegetable broth
or
Egg mayonnaise
or
Fruit Juice

Roast Sirloin of Beef with Yorkshire pudding
Pommes de Terre du Jour
Bouquetiere de Legumes

Peach Melba
or
Sherry Trifle
or
Black Cherry Cheesecake

The price of £14 per head includes a glass of non-alcoholic punch on arrival and 2 glasses of wine or fruit juice with the meal.

Further details will appear in future issues, a menu selection form will also appear shortly

Bletchley Park

The establishing of a museum associated with Bletchley Park has been well chronicled in the local press. We have known for some time that the trustees wished for a railway involvement in their plans and for a model of Bletchley station during the war time to be established in a permanent exhibition room.

Negotiations between ourselves and the trustees, as to their requirements in relation to building the Bletchley model, have been taking place recently. You will be aware that we were asked to put on a display of wartime model trains at their D - Day event in June, which thanks to Brian Barnes, Stan Pennington, John Hatton and others, we displayed an impressive range of Hornby O, Trix Twin, Hornby Dublo etc. at fairly short notice.

Armed with the knowledge that there was to be a model railway involvement at Bletchley Park, our Chairman was keen to make sure that if any model railway societies were to be involved, then we were the people they should be talking to.

The committee therefore appointed a four man team comprising of Gordon Etherington, Colin Jamieson, Fred Collins and myself to meet the Trustees to establish their requirements.

The result is that we will soon have access to a building in which the exhibition layout of Bletchley will be located. The model will be some 55' long in OO scale, and we have told the trustees that it will be a long term project. If you think that a model of Bletchley as it is today is pretty challenging stuff, you should have seen it during the war!

In addition to the layout of Bletchley there will be adequate opportunity to display other layouts, some of which are currently stored at

Holne Chase and will need minor works before they can be exhibited. It will also allow us to make better use of the O gauge layout donated by Steve Dennison, which had originally been continuous run. The width of our club room has not enabled us to make use of the curved boards at Victoria Road and as a result these have had to be stored. We could only hope that one day we would be in a position to use them, now that day is approaching! There will be other opportunities to show other layouts once the exhibition room has been established.

The proposed exhibition room is more than adequate to undertake the role described. **It is however in need of some tidying up and repair work before we can use it in anyway. I am therefore requesting the assistance of members to join working parties on Sundays and evenings, if only for an hour or so, so that we can at least show we are committed to the project. There is also a need to remove a 4.5" brick partition (free standing), in due course.** Once this work has been completed we can start to plan the exhibition areas and make arrangements for layouts to be displayed.

This work is in **addition** to our own club activities which will continue at Victoria Road. Our current club rooms will continue as our base for our Tuesday activities and be used for the building of the EM layout and other projects. The new O layout will now be built in its continuous form and is likely to be moved to a temporary workshop (the former college Dining Hall!) so that work can commence on the layout in readiness for the move into the exhibition room.

Those wishing to be involved at Bletchley Park will need to be issued with identity cards. These are now almost universal in most places

of work and because Bletchley Park is a high security area, all members are advised to apply for a pass, which will permit access via the main security gate at the Wilton Avenue entrance. It will be necessary for MKMRS members to provide **two passport size photographs** of themselves, the type obtained from machines being perfectly acceptable. One copy will be attached to the pass, the other being retained with details by the security officers. Current legislation requires all of us to supply them with names, addresses, telephone numbers, next of kin etc. Please remember that Bletchley Park is still Government property, even though it is being leased out to the trustees. Please supply photographs to me, so that they can be forwarded to Bletchley Park. I shall have a supply of forms for you to fill in as part of the operation. Until then, members working on site will have to sign in at the gate.

Car Parking will be designated and mandatory - don't just leave vehicles anywhere, The

exhibition building also having access for loading/unloading etc.

In order to assist the full time Security Officers, MKMRS members should keep in close proximity to our designated working areas. When the area is open to the public then this obviously will not apply.

Bletchley Park provides a golden opportunity for us to show the hobby in a way never previously available to us. The complex is one with long term ambitions and has considerable support.

Further meetings are scheduled and I will keep members fully informed. It is however a project which is only just evolving and one which gives us the chance to show our modelling skills on something far more ambitious than is normally possible.

Les Wood, Vice President

Bletchley Park - Stop Press

The Bletchley Park Trustees have given us access to part of the complex on a temporary basis, whilst the exhibition hall is refurbished.

During the next month, some of our members will be working on site at Bletchley Park.

The **new O gauge layout** will be moved to the former dining hall, where it can be worked on to make it into a continuous layout. The end curved boards will be moved from store at Holne Chase. This will enable the layout to be a more advanced state when it moves into the exhibition hall next spring.

At the same time **Verney Junction** will be moved from store at Holne Chase to the same site. This will be refurbished over the next few months ready for installation in the exhibition hall.

Work on the **exhibition hall** will begin during the next few weeks. This will involve some major effort initially and a continuing commitment from our membership. Fred will be coordinating work and volunteers will be urgently required for working parties.

The **Victoria Road** club rooms will continue to be our base and will be open as usual on Tuesdays etc. The **EM** and **N** gauge will continue as present. The **library** will be open as usual.

Obviously we shall be operating on different sites at times. Please liaise with project leaders regarding the current situation. Until security passes are available, there will have to be temporary access arranged by the project leaders.

Dennis Lovett, Chairman.