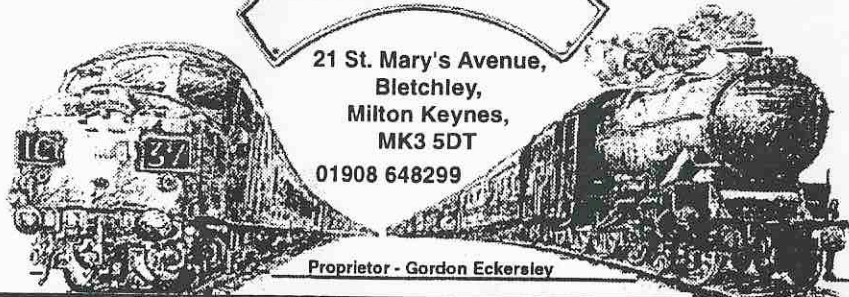


## BLETCHLEY RAILWAYANA

21 St. Mary's Avenue,  
Bletchley,  
Milton Keynes,  
MK3 5DT  
01908 648299

Proprietor - Gordon Eckersley



### Model Railways, Railway books, Ephemera and Relics BOUGHT AND SOLD

We buy or part exchange unbuilt or part built kits

#### MODELS

**Gauge O** - Try a kit or ready to run model - we stock both. The following O gauge ranges are in stock: Slaters, RJH, Janick, Mendip Models, Parkside Dundas, Connoisseur, Mikes Models, Oakville, Pocket Money Kits, Scorpio, Alan Gibson, Westdale.

**OO gauge** models by: Lima, Bachmann, Dapol, Ratio, Hornby, Slaters, Peco.

**N Gauge** models by: Graham Farish, Minitrix, Ratio, Peco, Slaters, KRS.

We also stock - paints by Humbrol and Railmatch, transfers by Fox, Howes and Woodhead. Nameplates from CGW and Jackson Evans. Electrical items by Seep and Gaugemaster. Try us for tools, drills, cutting mats, soldering irons, flux, glues and sundela board.

Mail order service available.

#### BOOKS

A good selection of new and secondhand books and magazines always in stock. We can also order books for you.

#### PAINTINGS

Commissioned railway paintings. Original oil paintings, drawings, pastels, watercolours, prints and acrylics. Picture framing service.

#### RAILWAYANA

Locomotive name and numberplates, lineside and station signs, signalling, handlamps, station lamps, railway silverware, station furniture, glass and china, uniforms, buttons, badges and clocks - bought and sold.

Telephone for details.

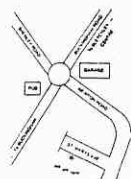
#### PRINTS

Photographic prints and post-cards always in stock to please the collector.

#### WANTED

Commercially made trains in all gauges, clockwork, steam and electric by Hornby (Dublo & O), Bassett Lowke, Trix, Bing, Marklin etc. Also early brass, tinplate, wood or cast iron trains, stations and accessories. Also required more recent models by Airfix, Lima, Mainline etc. American & Continental also purchased.

Where to find us



#### Open 6 days a week

Mondays	1000 - 1730
Tuesdays	1000 - 1730
Wednesdays	Closed
Thursdays	1000 - 1730
Fridays	1000 - 1730
Saturdays	1000 - 1730
Sundays	1000 - 1300

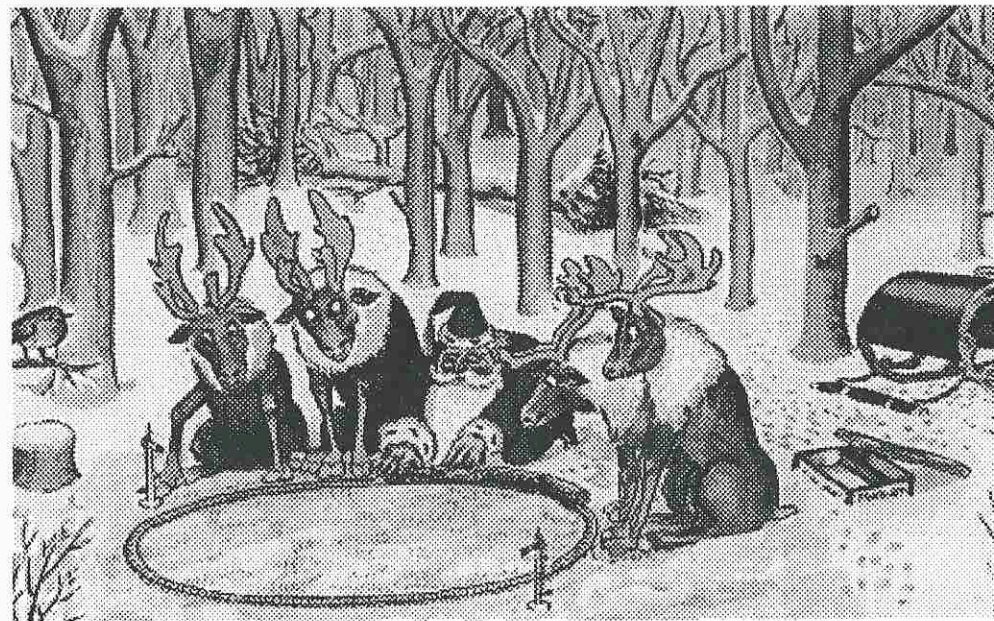
Free parking outside shop.



# MKMRS NEWS

No. 46

JANUARY 1996



A Merry Christmas to all our members

Published by Dennis Lovett, Chairman, Milton Keynes Model Railway Society

Telephone 01908 376750



JUST WHEN YOU THOUGHT IT WAS SAFE TO ....

Hi there, folks, I'm back! I'm sure you're all pleased to see me. We-e-ll, after that resounding welcome, here's something to fill in the time between the end of Christmas lunch and the start of decent TV programmes. This word square is a monster and, inspired by *Duke of Gloucester's* run along the West Coast main-line, takes us from London (Euston) to Glasgow (Central) as it was before "rationalisation" in the 1960s. Just find the station name in the square and cross it off the list - that's all there is to it!

Y E L E G U R G Y U D F A R C E N T W N J P S F A L A G U T  
W J S K L P I E B E R K H A M S T E D A A R G V P O R B T O  
Q W A F A G Y E X C H U R S N W E D E U N G I A N C U C E O  
I N S Y O H A P P Y F L T G D O U Z U O K N A B T S E H T F  
E Z E H G T I I A Y I Z X H E A U L T A P O W I H D R L O N  
A O A U T L R Z L S L G W O L V E G F P N B T E A C M P E A  
J H R O S Y I U L J L H I L A R N D E F C A Y A E D R N N V  
D N C W A T N E I R E D L B X I G R N E L G R E H T U R A L  
F C R O S R O C S T W E L O M L K O L V A N G N S E Y E I E  
Y L A T L I E N I H R F E Y I O I F M D Y Z N P E N R I T H  
C A V I E N O U E B E C S E A R O F M A N C U I A P P W S B  
H W E K T G E Z A M H B D I A D R A Z Z U B N O T H G I E L  
F E O R A E J O I U T A E Y S H O T I X D N E A S D E G I O  
D I A G W X F N L K O W N N V T N S W B A I M S T R A A S R  
E L S W E A U K H R M W J R E R V C R L T W L J I M E N A I  
T K W L P N R G R F V E U C H O P R M I O L M K X D O Z R G  
H L H R E L O K P R G F N V E F H P W R A C H R I S T M A S I  
E L I A E B A T X I T K C U P N L J B A J T K A N T E R G I  
C I T L A N C A S T E R T E I R T Y F O T E S E Y O P J D N  
Y O M T X E U Y Z E S U I Q H A K R D O X V E R R S D Q W A  
N E O L E X I E T D R A O N G C E R A J Z M W N A B N E L R  
R C R Q R M N L T G V P N O T R E V L O W D O I U C I G E S  
K S E U E H T H B P H S B F K E I M F H A I G O I B L E S W  
E O R V X M Q C E H I G H G L W Z Z R W T D N L R E F N A Q  
G H L E C A S T L E T H O R P E I O A C E T O D D A E R B U  
R O G A N D L E T A Y M A X Z R R E N E B B T O H T R C I M  
W N N H C I X L R Q H B U P E O B U I S F N G Q T T A L N G  
E T A H G Z A B R C W B G I S N J F O Q E T N R E O I J G V  
M R L N O T G N I R R A W U B D H R E D L E I F H C I L T C  
B Y S J T E S W T P E S T E R E D O M E Z V D I R K T L O B  
L I U E A N L J K T A M W O R T H A L E S R D O C H I M N E  
E O B L O O K M Q I X H F J D T C W S M L D E K E D H E L B  
Y A M S C R E R B W E T S G L Y E V L N E R H A R R O W Y T  
Y V A E W M F B Q L A N A R K S H R E W E R C N U M Q F O D  
U S C T A H T R O W S I L B O R A T G R A Y R I G G C E N H

- |              |                  |            |                    |
|--------------|------------------|------------|--------------------|
| Abington     | Central          | Lichfield  | Symington          |
| Beattock     | Cheddington      | Lockerbie  | Tamworth           |
| Berkhamsted  | Colwich          | Motherwell | Tebay              |
| Bletchley    | Crewe            | Nuneaton   | Tring              |
| Blisworth    | Elvanfoot        | Oxenholme  | Warrington         |
| Boxmoor      | Euston           | Penrith    | Watford Junction   |
| Bushey       | Grayrigg         | Preston    | Weedon             |
| Cambuslang   | Gretna           | Roadie     | Wembley            |
| Carlisle     | Harrow           | Rugby      | Whitmore           |
| Carnforth    | Hest Bank        | Rugeley    | Wigan              |
| Carstairs    | Lancaster        | Rutherglen | Willesden Junction |
| Castlethorpe | Leighton Buzzard | Shap       | Wolverton          |
|              |                  | Stafford   | Wreay              |

MILTON KEYNES MODEL RAILWAY SOCIETY

Founded 1969

President	Jim Wood	Committee	Geoff Bell
Vice Presidents	Les Wood		Chris Garner
	Gordon Etherington		Chris Lester
Chairman	Dennis Lovett		Colin Jamieson
Vice Chairman	Fred Collins	Librarian	Mark Wilson
Secretary	Chris Hughes	Museum Co-ord.	John Hatton
Treasurer	Eric Bowman	CMRA Rep.	Chris Lester

Out with a bang!

Our 12th Model Railway Exhibition, held at the end of the October, was once again a quality show. Congratulations to Chris Hughes and his team for coming up with the goods, even if he did have a few last minute problems, which necessitated some changes being required.

All around us, news was reaching us of IMREX being cancelled, and of shows reporting considerable loss of custom. We had already decided as a committee, that this show would be out last in the big league. Costs keep going up, and the only way to reduce these was to reduce the quality and standard of exhibits. We could have cancelled in the Spring, but we had already booked some layouts over two years ago and this would have reflected badly on the club. We took the brave decision to carry on - the objective being to break even. Our research indicated that this was the best we could hope for, if we did really well, then a small surplus might materialise. In the old days (up till last year) we relied on our bi-annual exhibitions to pay 50% of the rent bill for the two year period in between. If we had to rely on that still, then I can assure you, that if we had stayed at Victoria Road, then this editorial would have been the last and would probably have been entitled "Shutting up shop!".

For the first time ever we recorded a loss - we thought we might and it is nothing we cannot handle! The seriousness of it all could be seen

in several officers faces on the Friday evening, when we were sunk for £4,000 and had no idea if anyone would turn up to enable us to pay what we owed. There is no way that we can go through this in future.

We have now established ourselves at Bletchley Park and we must concentrate our effort there. There is much to be done and we can exhibit all we like, without having to hump everything down the road and back again, paying vast amounts of money for the pleasure!

If Bletchley Park fails then we fail. We have had two experiences in the past year, which could have resulted in our demise. The first was the increase in rent at Victoria Road, the second was the risky exhibition business we have just come through. But we are fighters, we are one of the most experienced clubs around and when faced with problems - we stand up to them and overcome them. They are not threats but opportunities and Bletchley Park is a glorious opportunity for MKMRS.

We may have to change direction - but that's how organisations and companies survive. Twelve quality exhibitions and everyone as good as the rest. We should all be proud. It was the ending of a chapter, but it was also the start of another one in our long and distinguished history.



Dennis Lovett, Chairman



## Club Notices

### Bletchley Park Opening Dates

Bletchley Park is open from 10.30 until 5pm on the following dates:

### 2nd/3rd December, 16/17th December

In order to co-ordinate our efforts properly in future, the committee has appointed John Hatton to act as Museum Co-ordinator. Your assistance in supporting the staffing of the club rooms is required. Please see Chris Hughes or John Hatton with dates you are available (2 people per day). A volunteer sheet appears by the signing in book in the entrance area.

From January, members will be rostered in advance, so that the workload can be spread amongst the membership. At the moment we are meeting our requirements by relying on a small team of members and this clearly cannot go on next year. We need your support in 1996.

### Swapmeet dates

A swapmeet will take place at Woughton Campus on the following dates during 1995;

#### December 17th

Opening times are 1100 - 1500. Admission is 60p, child/senior citizens 30p.

### HMRS Diary 1995/6 Season

MKMRS members are welcome to attend the meetings held in our club room free of charge. The programme is published well in advance

to enable you to book dates in your diary. Meetings are held on Wednesday evenings in our main club room, commencing at 7.30 pm.

### 28th February - MKMRS Club Room

Master of the lining pen - Bob Moore will be giving a practical "hands on" session on how to line your models. Pens will be available for sale if you fancy your chances after all the demonstrations. PS. The last "demo" job I attended on soldering, we all had a go. I've still got the burnt fingers to prove it!

### 24th April - MKMRS Club Room

The Barry Railway by C. Chapman

Following the interesting talk he gave on the Taff Vale Railway, the speaker returns to give the history and an operating review of the Barry Railway in South Wales. The movement of coal both for inland use and for export was the principal function of the Barry Railway.

*In addition to the HMRS meetings held at our club rooms, meetings for October, January and March are being held at Kempston. The March meeting (27th) will be by Richard Crane on Bedfordshires Railways.*

*MKMRS members are invited to attend the meetings free of charge. Further details from Eric Bowman.*

### Christmas and New Year Arrangements

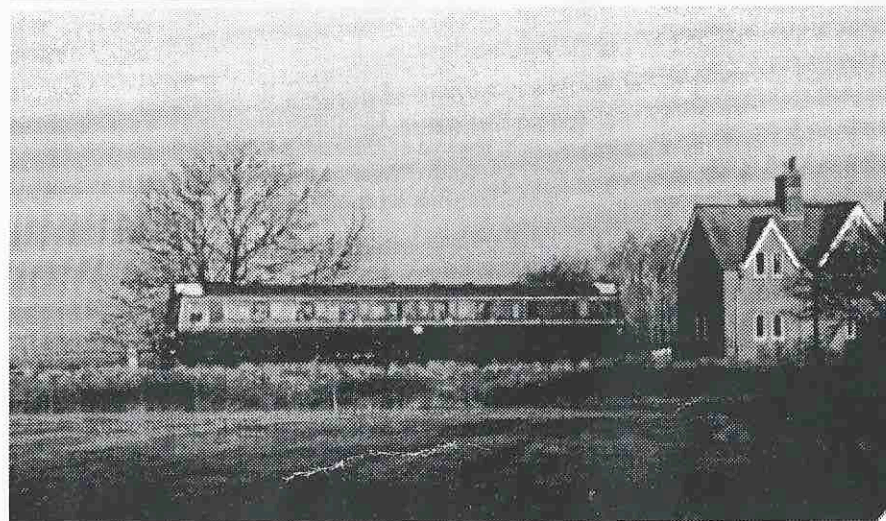
Tuesday 19th December - club open  
**Tuesday 26th December - Bank Holiday  
 CLOSED**

Tuesday 2nd January - club open

I would like to take this opportunity to wish all members and their families **A Merry Christmas and a Happy New Year.**

1996 looks like being pretty busy both at the park and elsewhere

Dennis Lovett, Chairman



### 3rd April

Talk - Bedfords Railway Age  
 at Toddington Methodist Church

### 21st May

Talk - Bedfords Railway Age  
 at Bedford U3A Group

### 1st July

Talk - Bedfords Railway Age  
 at Bedford U3A Group

### Saturday 14th September

Model Railway Exhibition  
 Fulbrook School, Woburn Sands

Of importance to our club is the model railway exhibition at Woburn Sands on Saturday 14th September, 1996, which MKMRS will be organising on behalf of the celebration committee. I, for my sins, have been nominated exhibition organiser and I have managed to rope in Chris Lester to assist me. Although this exhibition will not be anything like our own, we shall obviously need the support and

assistance from our fellow club members. I will be giving out more details as they become available through this newsletter and will be twisting arms nearer the time (so watch out!!!!)

### 30th September - 12th October

Bletchley - Bedford 150 Exhibition  
 Bedford Library

### 12th October - 4th November

Bletchley - Bedford 150 Exhibition  
 Bedford Museum

### October

Special Trains on the line (provisional)

### 16th November

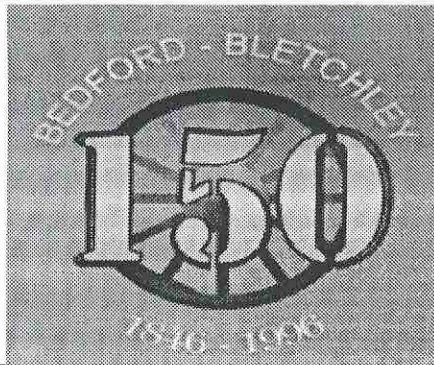
**BBRUA Rail Day**  
 Civic Theatre, Bedford  
**John Huntley Film Show**  
 Civic Theatre, Bedford

More next month



# Bedford - Bletchley 150

By Colin Jamieson



1996 sees the 150th of the Bletchley to Bedford Line. I have been "volunteered" to be our representative on the organising committee for the celebrations.

Once part of an important east - west link between Oxford and Cambridge, the original section was first built between Bletchley and the important town of Bedford, becoming the first railway to serve the county. Sadly, the sections between Oxford and Bletchley and Bedford and Cambridge lost their passenger services on 31st December, 1967. Part of the Oxford section has seen passenger services restored to Bicester in recent years and is used for freight as far as Claydon Junction, the Claydon Junction - Bletchley section, however, is currently "mothballed". The original Bletchley - Bedford line somehow kept its passenger services and remains in use. It has recently been marketed by North London Railways, of which our Chairman knows a little, as the Marston Vale line.

The first sod was cut by the Duchess of Bedford on the 13th December, 1845 using a silver spade and a wheelbarrow made from oak grown on the Woburn estate. This ceremony was carried out a little to the east of Ridgmont station, in the parish of Husborne Crawley, the mid-point of the line. The line was officially opened on the 17th November, 1846 amidst much rejoicing.

The planning committee has been formed to organise the 150th Anniversary events, with a

large number being planned throughout the year. This will include the opening of the line on Sunday 17th November, courtesy of NLR and Railtrack, when special trains will run and the sod digging ceremony reinstated by the Marchioness of Tavistock, the current lady of Woburn Abbey. The local councils along the route (Mid Beds, Bedford Borough, Milton Keynes, Bedfordshire County Council and Buckinghamshire County Council) have all expressed their support for the celebrations. As well as commemorating the lines birthday, it is hoped that the events will bring publicity to the line and encourage more people to use it, thus ensuring its survival and growth.

The events planned so far are:

## 5th January

Talk - Oxford to Cambridge - Then and Now at the Kettering Locomotive Club

## 7th February

Talk - Bedfords Railway Age at Kempston Ladies Guild

## 21st March

AGM of the Bedford to Bletchley Rail Users Association, Lidlington.

## 27th March

Talk - Bedfords Railway Age at the Historical Model Railway Society

## Notice of Annual General Meeting

In accordance with the requirement of the club rules, I am giving in excess of the 21 days notice needed to notify you that the Annual General Meeting of the Milton Keynes Model Railway Society will take place as follows:

**Tuesday 30th January, 1996**  
**Commencing at 8pm**  
**at the MKMRS Club Room, Bletchley Park**

The nomination form for the appointment of club officers will be circulated by me in due course. These should be completed and handed to myself before the start of the meeting on the date specified above.

Chris Hughes  
Secretary  
8th November, 1995

The club competition will take place on the same evening. Full details are given below:

## Club Competition

As usual, the club modelling competition will be run in conjunction with the Annual General Meeting, so now is the time to start finishing off your models.

The classes of competition are as follows:

- 4mm or less scratchbuilt locomotive (for **George Barratt Memorial Trophy**)
- 7mm or above scratchbuilt locomotive (For **T. Wilson Trophy**)
- 2mm or less kitbuilt or modified ready to run locomotive (For **P & D Marsh Trophy**)
- 4mm or less kit built or modified ready to run locomotive
- 4mm or less scratchbuilt rolling stock
- 7mm or above scratchbuilt rolling stock (For **Moorcroft Shield**)
- Scenic Items (any scale) (For **Rail Trophy**)

The rules of the competition state:

- 1 - No entry shall have previously been entered in a club competition
- 2 - The person submitting the entry shall be a fully paid up club member at the time of entry

*The competition will be judged during the AGM and prizes awarded afterwards*

Chris Hughes  
Secretary  
8th November, 1995

# Bletchley Park Roster Board

By the Chief Roster Clerk

Like all good motive power depots, MKMRS has found itself preparing rosters for engine driving duties at our home depot of Bletchley Park. Our commitment is to provide a crew to work on each day that the Park is open to the public and we have passed out on the route and gained considerable experience during our emergency rosters of 1995. Some of our crews are now reaching the time when they need relief and replacing with a fresh crew.

Duties are both pleasant and much more relaxing than the normal model railway exhibition. You run a few trains and talk to visitors and the time passes very quickly. For those crews that have not yet "passed out" on the "traction" then training will be given and our

Chief Traction Inspector - John Hatton will give any necessary tuition. Like all Depot messrooms there is plenty of time to catch a cuppa and free use of tea, coffee and sugar is allowed. Please bring some milk with you.

The roster starts from January 14th. we are asking all members to be available for a minimum of one rostered "shift". You can help me in this process by giving me your preferences. I know the Chairman has to watch Buckingham Town on Saturdays in the winter, so he's working in the Summer or on Sundays! Please see me at the club or contact me on 605417.

Your assistance is much appreciated.

## 1996 Open Days and staff arrangements

January 13th:	April 20th:
January 14th:	April 21st:
January 27th:	May 4th:
January 28th:	May 5th: Tattoo Weekend
	May 6th:
February 10th:	May 18th:
February 11th:	May 19th:
February 24th:	June 1st:
February 25th:	June 2nd:
March 9th:	June 8th:
March 10th:	June 9th: Military 96 Weekend
March 23rd:	June 15th:
March 24th:	June 16th:
April 6th:	
April 7th:	

## 1996 Opening Days

June 29th:	Boat Club Weekend
June 30th:	
July 13th:	
July 14th:	
July 27th:	
July 28th:	
August 10th:	
August 11th:	
August 24th:	
August 25th:	Bletchley Park show
August 26th:	
September 7th:	
September 8th:	
September 21st:	
September 22nd:	

October 5th:
October 6th:
October 19th:
October 20th:
November 2nd:
November 3rd:
November 16th:
November 17th:
November 30th:
December 1st:
December 14th:
December 15th:

If you have dates which you prefer, please advise me as soon as possible.

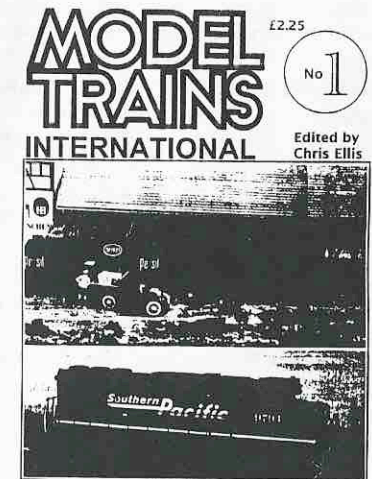
## New Magazine launched

A new magazine Model Trains International is now on sale at some model shops or by subscription. It has been produced by Chris Ellis who previously edited Scale Model Trains, which recently was taken over by Model Rail Enthusiast.

Costing £2.50 the first copy has been mailed to clubs and our example is now in the club library.

Annual subscriptions are available for £27.

Details on the noticeboard.



**IN THIS ISSUE**  
 Modelling Bavarian branch lines - with a 'lakeside' layout project  
 Detailing and improving Athearn's new HO GP60 loco  
 Oldbury Basin - an N gauge layout anyone can build  
 French branch line loco in HO by Giles Barnabe  
 - and lots more!