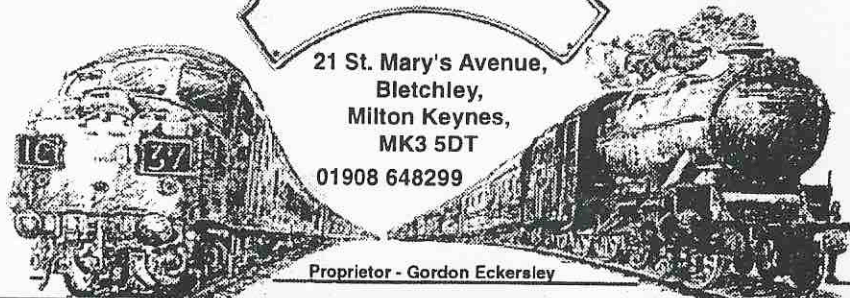


BLETCHLEY RAILWAYANA

21 St. Mary's Avenue,
Bletchley,
Milton Keynes,
MK3 5DT

01908 648299

Proprietor - Gordon Eckersley



Model Railways, Railway books, Ephemera and Relics BOUGHT AND SOLD

We buy or part exchange unbuilt or part built kits

MODELS

Gauge O - Try a kit or ready to run model - we stock both. The following O gauge ranges are in stock: Slaters, RJH, Janick, Mendip Models, Parkside Dundas, Connoisseur, Mikes Models, Oakville, Pocket Money Kits, Scorpio, Alan Gibson, Westdale.

OO gauge models by: Lima, Bachmann, Dapol, Ratio, Hornby, Slaters, Peco.

N Gauge models by: Graham Farish, Minitrix, Ratio, Peco, Slaters, KRS.

We also stock - paints by Humbrol and Railmatch, transfers by Fox, Howes and Woodhead. Nameplates from CGW and Jackson Evans. Electrical items by Seep and Gaugemaster. Try us for tools, drills, cutting mats, soldering irons, flux, glues and sundela board.

Mail order service available.

BOOKS

A good selection of new and secondhand books and magazines always in stock. We can also order books for you.

PAINTINGS

Commissioned railway paintings. Original oil paintings, drawings, pastels, watercolours, prints and acrylics. Picture framing service.

RAILWAYANA

Locomotive name and numberplates, lineside and station signs, signalling, handlamps, station lamps, railway silverware, station furniture, glass and china, uniforms, buttons, badges and clocks - bought and sold.

Telephone for details.

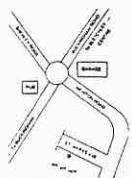
PRINTS

Photographic prints and post-cards always in stock to please the collector.

WANTED

Commercially made trains in all gauges, clockwork, steam and electric by Hornby (Dublo & O), Bassett Lowke, Trix, Bing, Marklin etc. Also early brass, tinsplate, wood or cast iron trains, stations and accessories. Also required more recent models by Airfix, Lima, Mainline etc. American & Continental also purchased.

Where to find us



Open 6 days a week

Mondays	1000 - 1730
Tuesdays	1000 - 1730
Wednesdays	Closed
Thursdays	1000 - 1730
Fridays	1000 - 1730
Saturdays	1000 - 1730
Sundays	1000 - 1300

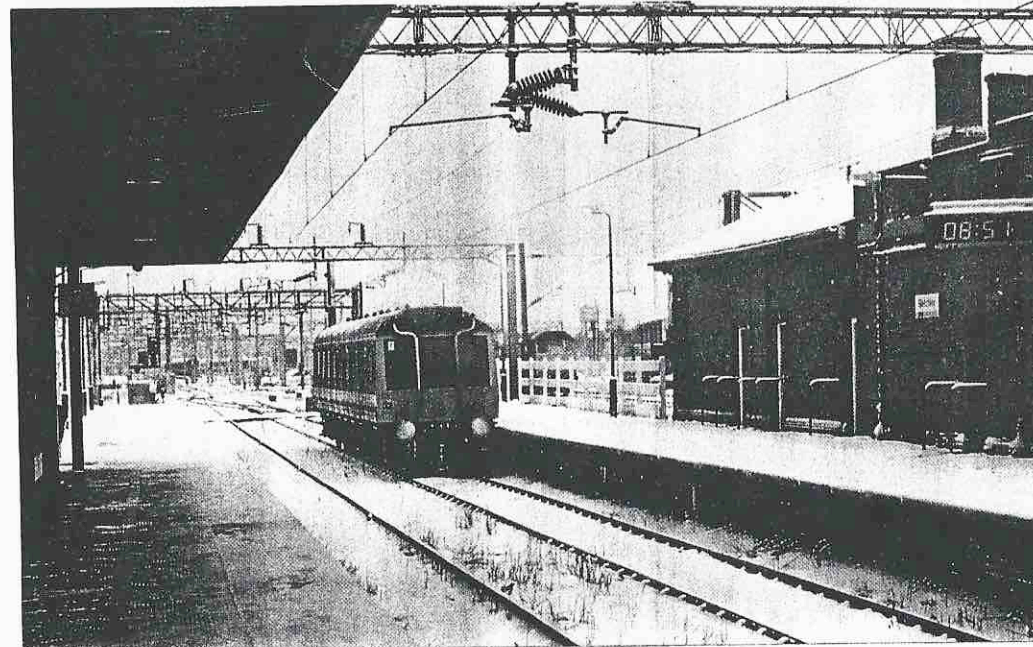
Free parking outside shop.



MKMRS NEWS

No. 47

FEBRUARY 1996



A train for Bedford leaves Bletchley in the snow

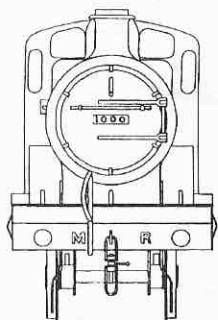
Published by Dennis Lovett, Chairman, Milton Keynes Model Railway Society

Telephone 01908 376750



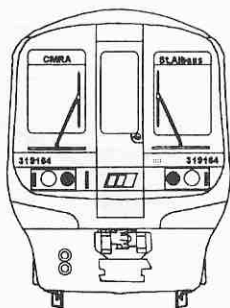
ST ALBANS MODEL RAILWAY EXHIBITION

Sat 13th & Sun 14th January 1996
10.00 am to 5.30 pm
at the Alban Arena, St Peters Street



Adults £2.50
Concessions £1.50
Children £1.00
Family (2 + 4) £5.50

Avoid the queue! Advance
tickets from the box office
01727 44488
from 11th December,
cash and cheques only.



Free vintage bus service between the Arena
and the City station, courtesy of the 712 Preservation Group.
Supplementary service via the Abbey station on the Sunday.

Trade Stands Demonstrations
Refreshments and Bar

20+ Layouts



Exhibition insurance sponsored by Traffords Ltd., 153 Hatfield Road, St Albans
For all your insurance requirements call 01727 833241

MILTON KEYNES MODEL RAILWAY SOCIETY

Founded 1969

President	Jim Wood	Committee	Geoff Bell
Vice Presidents	Les Wood		Chris Garner
	Gordon Etherington		Chris Lester
Chairman	Dennis Lovett	Librarian	Colin Jamieson
Vice Chairman	Fred Collins	Museum Co-ord.	John Hatton
Secretary	Chris Hughes	CMRA Rep.	Chris Lester
Treasurer	Eric Bowman		

The Democratic process

AGM night is once again fast approaching. It is the time when we look back on the past year and outline our plans and aspirations for the next.

It is the time when, you the members, have the democratic right to elect your officers and committee and to express your views on the direction we have taken,

The past 12 months have been very hectic. It is hard to realise that this will only be the second AGM to be held at Bletchley Park and we are now very much an integral part of that operation. We have had some difficulties but none which cannot be overcome and we are now in the business of building layouts to entertain visitors, many of whom have little experience of our hobby. We have had to change our thinking and this is now reflected in the layouts built or being built. We have yet to find a home for the large O gauge layout, but I can assure you that we have not been idle in this respect. We have taken every opportunity to show the Trustees what we can do and we intend to win through in the end.

I realise that some members are not convinced that we had to move and that Bletchley Park is the answer. Some have expressed these views and I appreciate them and thank them for letting me know the situation. All relationships have to be worked at and the one between MKMRS and Bletchley Park is no different. I appreciate that we have had to open up our

rooms for visitors and that this has come as a shock to some of us. In true MKMRS tradition we have learnt the museum business quickly and we have a lot more to learn yet.

This AGM is taking place because we managed to survive two fairly difficult periods in our history. The first was the termination of our lease on Victoria Road, all done eventually with a smile and a handshake, but it could have been very different. The loss on our recent exhibition would have closed down many other clubs. MKMRS is now a very different operation from the one I and many others joined on the opening night.

Change is a word that is widely used in the current railway industry. My old boss, Chris Green, called BR world leaders in "Change Management", because we had to do it so often! MKMRS does have more freedom than the real railways, but change has still come as a shock. We are having to learn new skills, rethink our strategy on exhibitions and so on. We are very much removed from the old days of MKMRS - but then the models are different and so are the layouts we run them on!

I believe that the transition we are going through is the right one. If you disagree then you have the democratic right to tell me so on the 30th January. See you there.


Dennis Lovett, Chairman.

Club Notices

HMRS Diary 1995/6 Season

MKMRS members are welcome to attend the meetings held in our club room free of charge. The programme is published well in advance to enable you to book dates in your diary. Meetings are held on Wednesday evenings in our main club room, commencing at 7.30 pm.

28th February - MKMRS Club Room

Master of the lining pen - Bob Moore will be giving a practical "hands on" session on how to line your models. Pens will be available for sale if you fancy your chances after all the demonstrations. PS. The last "demo" job I attended on soldering, we all had a go. I've still got the burnt fingers to prove it!

24th April - MKMRS Club Room

The Barry Railway by C. Chapman

Following the interesting talk he gave on the Taff Vale Railway, the speaker returns to give the history and an operating review of the Barry Railway in South Wales. The movement of coal both for inland use and for export was the principal function of the Barry Railway.

MKMRS members are invited to attend the meetings free of charge. Further details from Eric Bowman.

Timber

Thanks to the generosity of a local timber merchant, we now have plenty of timber in store for future projects.

The Bletchley Park duty roster now appears on Page 4. Your support is greatly appreciated. John Hatton will explain the procedures and how to operate layouts.

Swapmeet dates

A swapmeet will take place at Woughton Campus on the following dates during 1996;

11th February
14th April
7th July
13th October
8th December

Opening times are 1100 - 1500. Admission is 60p, child/senior citizens 30p.

CMRA Exhibition

The Chiltern Model Railway Association's Annual Model Railway Exhibition will take place on Saturday/Sunday 13th/14th January at the Alban Arena, St. Albans.

MKMRS AGM

Members are reminded of the AGM and competition on Tuesday January 30th. Please see separate notice.

Fenny Stratford

The N Gauge team are working on the layout to meet our commitments to have it on display at the 14th September. there is still room for volunteers. Please see Chris Garner.

Workshop

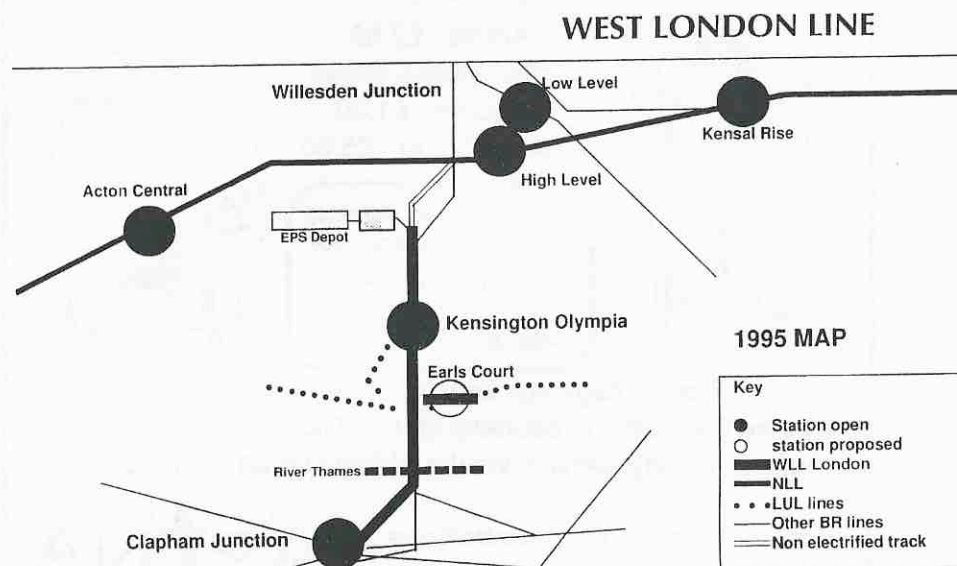
Thanks to Ernie and his helpers, the workshop is now taking shape. Also thanks to Ernie for the special club pencils which can be used in the workshop. Any tools etc. borrowed should be returned to the appropriate place

East Croydon. The London, Brighton & South Coast operated a Kensington - West Croydon service, whilst the London & South Western concentrated on the Kensington - Clapham Junction shuttle.

The London & North Western introduced a service from Euston to London Bridge via Kensington in July 1865. It used the line across what is now Waterloo concourse which joined with the South Eastern railway at today's Waterloo East. In 1867, it was diverted to Cannon Street but ceased altogether a year later. From 1875 until 1893 a service was operated to Waterloo.

A station opened at West Brompton on 1st September, 1866. The Metropolitan District Railway platforms (now served by London Underground's District Line Wimbledon branch) opened three years later in April, 1869. Here passengers could interchange when the District Railway

To be continued



The West London Railway (Willesden - Kensington)

Part 1

By Dennis Lovett

The West London Railway began life in 1836 as the Birmingham, Bristol and Thames Junction Railway. It had assumed its West London name by 1840 but did not open until 27th May, 1844. It was built to connect the London & Birmingham and the Great Western Railway with the basin of the Kensington Canal and the Thames boat traffic. Financed by both companies it was built as a mixed gauge line with both the standard gauge of 4' 8 1/2" and the Great Western Railway broad gauge of 7' 0 1/4". It ran from a point near the yet to be built Willesden Junction to the canal basin at Kensington 2.5 miles away. Although built principally for freight traffic, a passenger service operated every 30 minutes although patronage was poor despite the provision of stations at West London Junction (south of the current Willesden Junction station), Mitre Bridge, Shepherds Bush and Kensington.

The passenger service was soon withdrawn on 30th November, 1844 as considerable operating difficulties had been experienced trying to cross the Great Western Railway main line from Reading to Paddington on the "flat" at Old Oak Common. This level crossing had to be replaced by a bridge, which was done in 1860.

The line ceased to be of any great importance until it was linked with the West London Extension Railway (see Section 6:). Passenger services were reintroduced at Kensington from June 1862, although intermediate stations were not reopened. A station was opened at Uxbridge Road on 1st November, 1869, close to the site of the former Shepherds Bush station, and at Wormwood Scrubs

on 1st August, 1871. This was renamed St Quintins Park & Wormwood Scrubs in August, 1892. The first station closed on 1st November, 1893 and was replaced by another station with the same name on located to the north of the former structure.

The West London Extension Railway (Kensington - Clapham Junction)

Built on the route of the in filled Kensington Canal (only a short portion of which remained to serve Chelsea Basin), this line was built as a joint operation and was owned by four companies. The Great Western Railway and London & North Western Railway both owned a third each with the London & South Western Railway and the London, Brighton & South Coast Railway each owning a sixth. It ran south from Kensington to Clapham Junction.

Opened on 2nd March, 1863, it was mixed gauge (*see West London Railway above*) Intermediate stations were open from the start of services at Chelsea and Battersea. The Great Western Railway ran through trains from Southall to Victoria from 1st April, 1863 formed of standard gauge stock from the start. The main line to Victoria and the branch to Falcon junction were mixed gauge. Broad gauge trains of the Great Western used the route from Reading and Windsor to Victoria until October 1866, when they were formed of standard gauge stock. In the early days the longer distant trains had their coaches detached from Paddington bound expresses at Old Oak Common. Broad gauge freight trains continued to run to the GWR freight depot at Chelsea Basin. The Great Western abandoned the Broad Gauge in 1892, but continued to use Victoria until 1915.

A service was operated jointly from the beginning by the London & North Western and London, Brighton & South Coast to

Notice of Annual General Meeting

In accordance with the requirement of the club rules, I am giving in excess of the 21 days notice needed to notify you that the Annual General Meeting of the Milton Keynes Model Railway Society will take place as follows:

Tuesday 30th January, 1996
Commencing at 8pm
at the MKMRS Club Room, Bletchley Park

The nomination form for the appointment of club officers will be circulated by me in due course. These should be completed and handed to myself before the start of the meeting on the date specified above.

Chris Hughes
Secretary
8th November, 1995

The club competition will take place on the same evening. Full details are given below:

Club Competition

As usual, the club modelling competition will be run in conjunction with the Annual General Meeting, so now is the time to start finishing off your models.

The classes of competition are as follows:

- 4mm or less scratchbuilt locomotive (**for George Barratt Memorial Trophy**)
- 7mm or above scratchbuilt locomotive (**For T. Wilson Trophy**)
- 2mm or less kitbuilt or modified ready to run locomotive (**For P & D Marsh Trophy**)
- 4mm or less kit built or modified ready to run locomotive
- 4mm or less scratchbuilt rolling stock
- 7mm or above scratchbuilt rolling stock (**For Moorcroft Shield**)
- Scenic Items (any scale) (**For Rail Trophy**)

The rules of the competition state:

- 1 - No entry shall have previously been entered in a club competition**
- 2 - The person submitting the entry shall be a fully paid up club member at the time of entry**

The competition will be judged during the AGM and prizes awarded afterwards

Chris Hughes
Secretary
8th November, 1995

Bletchley Park Roster Board

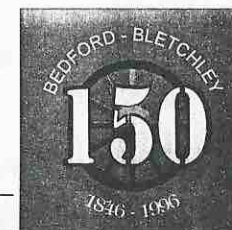
By the Chief Roster Clerk

1996 Open Days and staff arrangements

January 13th:	July 13th:	
January 14th:	July 14th:	
January 27th:	July 27th:	
January 28th:	July 28th:	
February 10th:	August 10th:	
February 11th:	August 11th:	
February 24th:	August 24th:	
February 25th:	August 25th:	Bletchley Park show
	August 26th:	
March 9th:	September 7th:	
March 10th:	September 8th:	
March 23rd:	September 21st:	
March 24th:	September 22nd:	
April 6th:	October 5th:	
April 7th:	October 6th:	
April 20th:	October 19th:	
April 21st:	October 20th:	
May 4th:	November 2nd:	
May 5th: Tattoo Weekend	November 3rd:	
May 6th:	November 16th:	
May 18th:	November 17th:	
May 19th:	November 30th:	
June 1st:	December 1st:	
June 2nd:	December 14th:	
June 8th:	December 15th:	
June 9th: Military 96 Weekend		
June 15th:		
June 16th:		If you have dates which you prefer, please advise me as soon as possible.
June 29th: Boat Club Weekend		
June 30th:		If you are unable to work the day allocated please arrange a "swop" with another

Bedford - Bletchley 150

By Colin Jamieson



Diary of Events

5th January

Talk - Oxford to Cambridge - Then and Now at the Kettering Locomotive Club

7th February

Talk - Bedfords Railway Age at Kempston Ladies Guild

21st March

AGM of the Bedford to Bletchley Rail Users Association, Lidington.

27th March

Talk - Bedfords Railway Age at the Historical Model Railway Society

3rd April

Talk - Bedfords Railway Age at Toddington Methodist Church

21st May

Talk - Bedfords Railway Age at Bedford U3A Group

1st July

Talk - Bedfords Railway Age at Bedford U3A Group

Saturday 21st September

Model Railway Exhibition Fulbrook School, Woburn Sands

Of importance to our club is the model railway exhibition at Woburn Sands on Saturday 21st September, 1996, which MKMRS will be organising on behalf of the celebration committee.

30th September - 12th October

Bletchley - Bedford 150 Exhibition Bedford Library

12th October - 4th November

Bletchley - Bedford 150 Exhibition Bedford Museum

October

Special Trains on the line (provisional)

16th November

BBRUA Rail Day
Civic Theatre, Bedford
John Huntley Film Show
Civic Theatre, Bedford

Saturday 16th November (provisional)

Re-enactment of the Opening Ceremony

Sunday 17th November (provisional)

Special Train to Civic Service etc at St Pauls Church, Bedford.