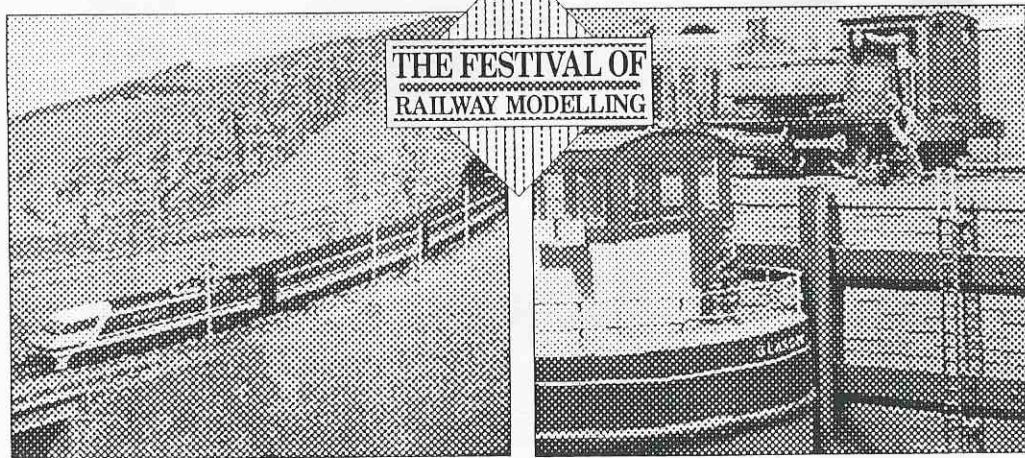
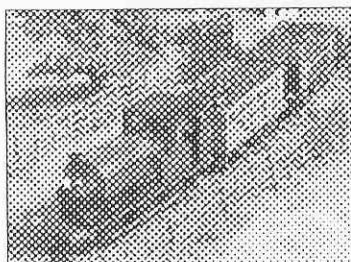


# The best of both worlds AT A GREAT NEW SHOW



Featuring more than 30 working layouts from 'N' to 'O' gauge – as featured in British Railway Modelling:  
This exhibition is sure to be a major event for model railway enthusiasts – make certain you

**DON'T MISS IT!**

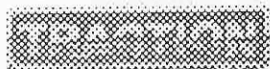


**FEBRUARY  
15th & 16th  
1 9 9 7**

**DONCASTER  
EXHIBITION CENTRE  
THE RACECOURSE,  
DONCASTER**

*From the publishers  
of two great magazines*

**BRITISH RAILWAY  
MODELLING**



Over 50 trade stands selling a variety of models, accessories, videos and books

Vintage bus shuttle from Mainline Railway Station via Town Centre for shopping

Loco-Clinic – Bring along your broken models



Plus upstairs in a separate hall a vintage toy collection organised by Toyman Fairs, with displays and sales of vintage and obsolete (pre-1975) tin-plate toy and model trains from UK top traders

**Kids** – drive Thomas the Tank Engine

**Free parking • Restaurant  
Licensed bar**

**ADMISSION PRICES**

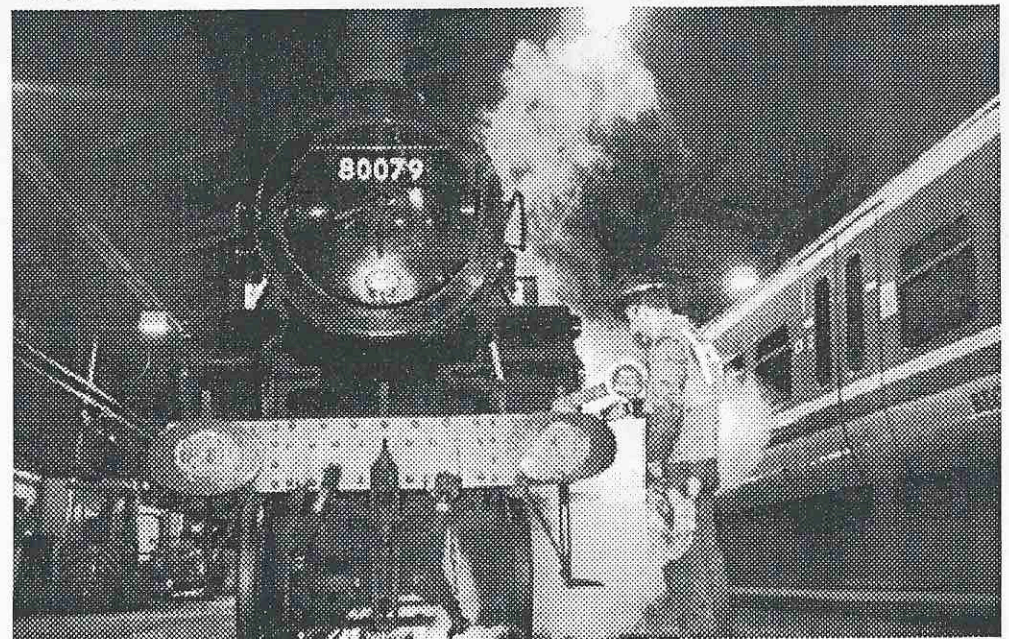
£5.00 Adults • £2.00 Child (under 14)  
£4.00 OAP • £13.00 Family Ticket (2+3)



# MKMRS NEWS

No. 59

FEBRUARY 1997



Steam returns to Bletchley Depot. No. 80079 on shed complete with "1E" shedplate stands on No.4 road at Bletchley TMD on 19/12/96. Photo: DAL

**Published by Dennis Lovett, Chairman, Milton Keynes Model  
Railway Society.**

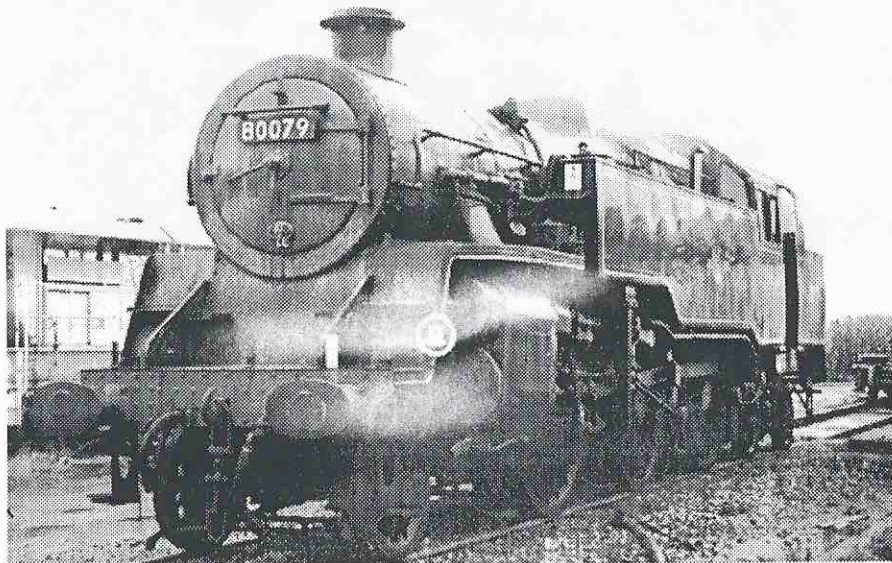
Telephone 01908 376750



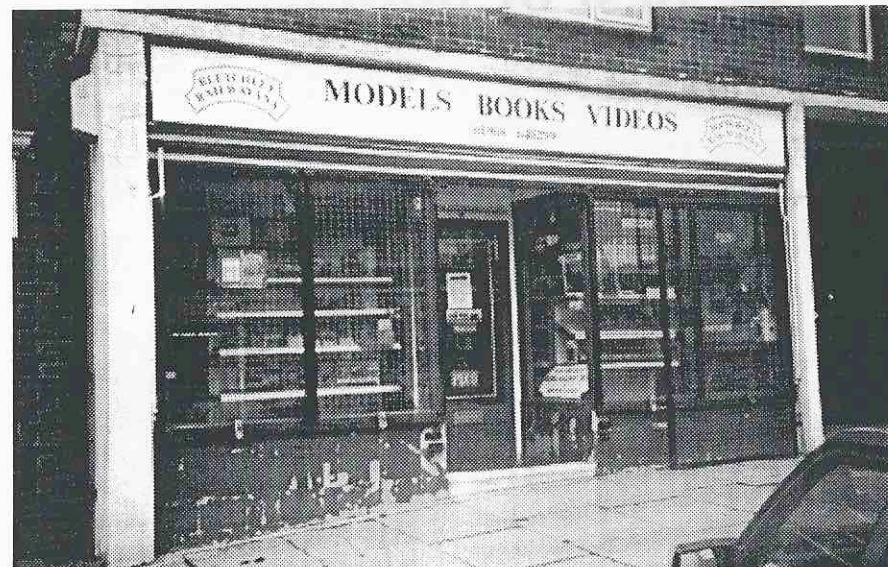
## Steam returns to Bletchley for Bedford-Bletchley 150 Celebrations



Two views of No.80079 being prepared on Bletchley TMD on Friday 20th December by the Severn Valley Railway Support Crew. This was the first steam locomotive in over 30 years to carry the "1E" shedplate. A replica plate has been donated by Bletchley Railwayana for display at Bletchley Park.



## Bletchley Railwayana bows out in style



On Saturday 30th November, Bletchley Railwayana closed its smokebox door for the last time before being reallocated to the North Norfolk Railway at Sheringham. Our news reporter caught some customers stocking up on items before closure. Sadly, we no longer have a specialist model railway shop trading locally. St. Marys Avenue has had two different model railway businesses trading from the same shop. Bletchley Railwayana continues to trade in Norfolk, although the change of location has required a name change to GE Models.





# Notice of Annual General Meeting

In accordance with the requirement of the club rules, hereby give advance notification of the 1997 Annual General Meeting of the Milton Keynes Model Railway Society will be held on

**Tuesday 28th January, 1997**  
**Commencing at 8pm**  
**at the MKMRS Club Room, Bletchley Park**

Nomination forms for the appointment of club officers will be available from me in due course. These should be completed and handed to myself before the start of the meeting on the date specified above.

Chris Hughes  
Secretary  
23rd October, 1996

The club competition will take place on the same evening. Full details are given below:

## Club Competition

As usual, the club modelling competition will be run in conjunction with the Annual General Meeting, so now is the time to start finishing off your models.

The classes of competition are as follows:

- 4mm or less scratchbuilt locomotive (for **George Barratt Memorial Trophy**)
- 7mm or above scratchbuilt locomotive (for **T. Wilson Trophy**)
- 2mm or less kitbuilt or modified ready to run locomotive (for **P & D Marsh Trophy**)
- 4mm or less kit built or modified ready to run locomotive (for **Jim Armstrong Trophy**)
- 7mm or above kit built or modified ready to run locomotive
- 4mm or less scratchbuilt rolling stock (for **Sylvia Armstrong Trophy**)
- 7mm or above scratchbuilt rolling stock (for **Moorcroft Shield**)
- 4mm or less kitbuilt or modified ready to run rolling stock
- 7mm or above kitbuilt or modified ready to run rolling stock
- Scenic Items (any scale) (for **Rail Trophy**)

The rules of the competition state:

- 1 - No entry shall have previously been entered in a club competition
- 2 - The person submitting the entry shall be a fully paid up club member at the time of entry

*The competition will be judged during the AGM and prizes awarded afterwards*

Chris Hughes  
Secretary  
23rd October, 1996

## MILTON KEYNES MODEL RAILWAY SOCIETY Founded 1969

President	Jim Wood	Committee	Geoff Bell
Vice Presidents	Les Wood		Chris Garner
	Gordon Etherington		Chris Lester
Chairman	Dennis Lovett		Colin Jamieson
Vice Chairman	Fred Collins	Librarian	Mark Wilson
Secretary	Chris Hughes	Museum Co-ord.	John Hatton
Treasurer	Eric Bowman	CMRA Rep.	Chris Lester

*MKMRS is a member of the Chiltern Model Railway Association and the Model Railway Club.*

## AGM Time

Annual General Meetings seem to come round much quicker than they used to - perhaps this is a sign of the Chairman getting older. They are, and always have been, however, an important part of our club life. It is your opportunity to elect your committee for the next year, to ask questions and receive information on future developments at the Park and of our future club activities.

Some organisations endure very stormy AGM's. We have been very fortunate in that we are the opposite. As members, we all have the opportunity to elect our officers, committee and auditors. We do not hide anything - one major model railway club would be in a far healthier state today, if it had opened its books to auditors, nominated from within its own membership to ensure that all was well.

AGM's also give us the opportunity to review what has happened over the past year. At Bletchley Park, the evidence is there for all to see

and we have come on leaps and bounds since this time last year! We now have a far better knowledge of museums than before and we are anxious to learn more. Our membership, after taking a few initial hesitant steps, is now used to open days and gets a great deal of pleasure from them.

Over the past two years we have seen more projects develop than at any other time in the history of the club. After the AGM work starts on Verney Junction and this will form the next of our projected visitor attractions. Fenny Stratford is nearing completion, whilst the O gauge awaits only somewhere large enough to display it! The EM project continues, whilst Mandlebury has received, thanks to Tony Winn, a major overhaul of the electrics after keeping the flag flying during 18 months of extensive operation at Bletchley Park.

The test tracks have now developed into a major layout attraction in their own rights

and have rewritten model railway text books on layout planning - since no plans have ever appeared - which should upset a few of our leading model railway authors! This layout, now safely secured behind Fred's excellent handiwork, is now a visitors favourite and I look out for future developments (almost on a weekly basis!!).

Over the years, we have reacted to changes within the hobby and we are now a very different outfit from the one I joined back in 1969. I trust we have got it right - if not I am sure that someone will soon tell me on AGM night!!

The AGM is also Competition Night, so bring along your latest efforts. Details appear elsewhere in this issue.

I look forward to seeing you all at the AGM. It is your opportunity to have your say in how we develop in the next 12 months

  
Dennis Lovett  
Chairman

# Club notes

## Swapmeet dates

A swapmeet will take place at Woughton Campus on the following date during 1997:

**February 9th**  
**April 13th**  
**June 29th**  
**September 21st**  
**November 23rd**

Opening times are 1100 - 1500. Admission is 70p, child/senior citizens 30p

## Gauge O Guild - Spring Convention 8th March 1997

The Gauge O Guild will be returning to Bletchley Leisure Centre after a gap of a couple of years for their Spring Convention - next March.

Due to the unexpected illness of the nominated organiser, I have for my sins been "persuaded?" to act as exhibition manager for this occasion. Before someone asks, I am doing this one event only and no I am not organising Telford!

You can please reduce the pressure by ensuring the date is in your diary!

Dennis Lovett, Chairman.

## AGM Notice

A separate notice giving details of the AGM and competition appears elsewhere in this issue.

## HMRS - February meeting

The HMRS will be at our club rooms on Wednesday 26th February at 1930 hrs when the subject will be "Caledonian Boat Trains". MKMRS members are invited to attend these meetings. Further details from Eric Bowman.

## Bletchley Park duties

**The Bletchley Park duty roster now appears on the next page. Your support is greatly appreciated. John Hatton will explain the procedures and how to operate layouts. A new roster for 1997 will appear shortly.**

## Bletchley Park photo passes

These are now available once more. If you are not in the possession of one of the blue ID passes with a photograph please provide the Chairman with two passport size photographs.

I appreciate that some of you have done this previously and they were lost outside of our control. Please resubmit them as production is now done on site and they are normally back within a few days.

## Honorary Membership

Following the closure of Bletchley Railwayana and Gordon Eckersley moving to Norfolk, your committee agreed to bestow Gordon with Honorary membership of MKMRS. A framed membership card was handed over by Les Wood, our Vice President. MKMRS acknowledge Gordon's contribution over many years. Gordon has helped many of our projects to progress by his generous discounts for bulk purchasing and we intend to continue to acquire items by mail order from Gordon as and when required in future.

## Thanks

to all those who turned out for the special Daily Telegraph event on the 22nd December. 400 out of the 1500 on site visited us.

# Bletchley Park Roster Board

By the Chief Roster Clerk

A new roster is currently being assembled and will be published in the next issue. January is expected to be a quiet period and will be resourced accordingly by club officers and volunteers! Full details from Chris at the AGM.

January continued.

25th  
26th

Dennis Lovett, Chairman

February

Dates are given for information:

8th  
9th

January

11th  
12th

**JH = John Hatton (Museum co-ordinator).**

If you are unable to work the day allocated please arrange a "swap" with another.

## Doug Moorcroft Honorary Member

It is with regret that I have to inform members of the death on Boxing Day of our long term friend and honorary member Doug Moorcroft.

Many members of MKMRS recall Doug's enthusiasm for model railways. A latecomer to the hobby, Doug was born in Chester in 1933, one of thirteen children, the son of a local builder and contractor.

After extensive Army service in Germany, Korea (the forgotten war), Cyprus and Malaya he left in 1959. After marriage to Grace, he entered the catering and hotel business.

Doug joined the Gauge O Guild in 1975. He held the first of the Taunton meetings in 1979 and in 1980 set up the Somerset Group

of the Guild, quickly building an extensive test track. Layouts Grace Road and Tauntonian followed and it was with the latter that MKMRS first encountered him. After borrowing Messrs Daly and Eckersley at the Truro Exhibition, he became well known to us. Not long afterwards, Doug was appointed to the Events Committee of the Guild and became its Exhibition Manager. He had heard all about a certain Bletchley Leisure Centre and the rest is history. Doug was always grateful for the assistance we gave him and remained a firm and enthusiastic supporter of MKMRS. Doug was later very proud to be appointed an honorary member of MKMRS and he always ensured that the club was thanked for its efforts in supporting the Guild.

Doug will be sadly missed. It was fitting that Gordon Eckersley our latest honorary member should represent us at the funeral in Taunton.

DAL

## N Gauge Society heads for Bletchley

The N Gauge Society is holding its 30th Anniversary at Bletchley Leisure Centre on 22/23 November, 1997. Details Ken James.

## Repair shops up and running

Austin Daly, well known for his ability to repair trains at Bletchley Railwayana has set up a repair facility. Details on 01908 376389.