

The Association of **16mm Narrow Gauge Modellers, Bedfordshire Area Group**

present

'Steam in Beds.'

An Exhibition

OF

Narrow Gauge Model Railways

in most popular scales, at

Parkside Hall, Ampthill, Beds.

Saturday 5th December 1998.

10.00am - 5.00pm.

Admission £2.00 and £1.00

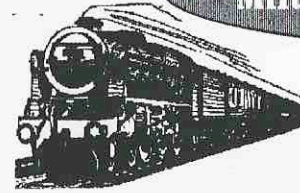
Featuring live steam locomotives.

With a full range of specialist suppliers
for the Railway Modeller and Narrow Gauge
enthusiast.

Members of the Chiltern Model Railway Association and the Southern Federation of Model Engineers

C HUGHES

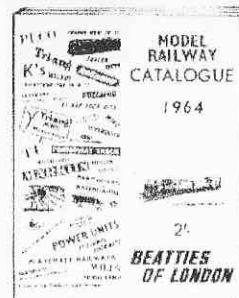
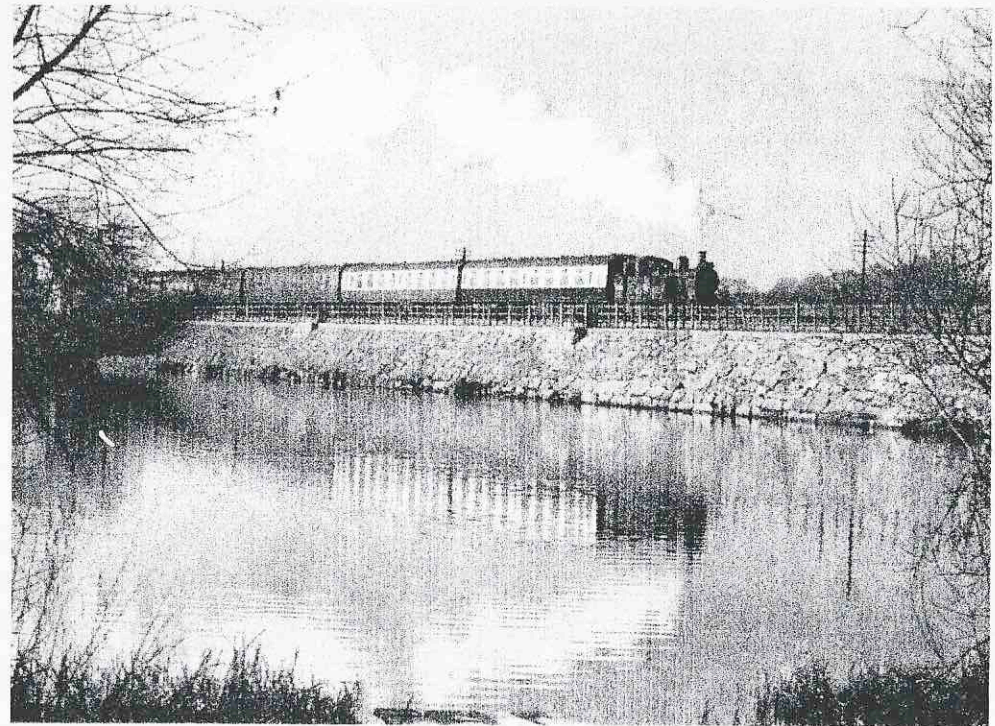
Milton Keynes Model Railway Society



Newsletter ...

No. 81

December 1998



The MKMRS is a member of:

- The Chiltern Model Railway Association
- The Model Railway Club
- The World War II Railway Study Group

THE LIVING LINESIDE by Dax

No. 4 THE LAZY LAMPLIGHTER

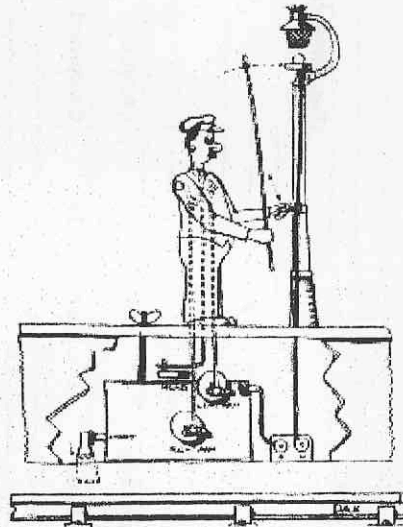
A working model with a surprising ending. The lazy lamplighter turns on the gas to the platform lamp when the train arrives, but regardless of escaping gas chats with the engine driver. His conversation complete, the lamplighter applies his lighting rod to the lamp. The lamp explodes with violence.

Complete with lamplighter, lamp, contactor and six electro-sensitive gunpowder pellets, £21/17/6.

Optional extra: Extra loud pellets (nitro-glycerine), 8/- for six.

Alternative type: Special model in which lamp remains intact but lamplighter explodes.

NOTE: Firearms certificate is required.



THE LIVING LINESIDE by Dax

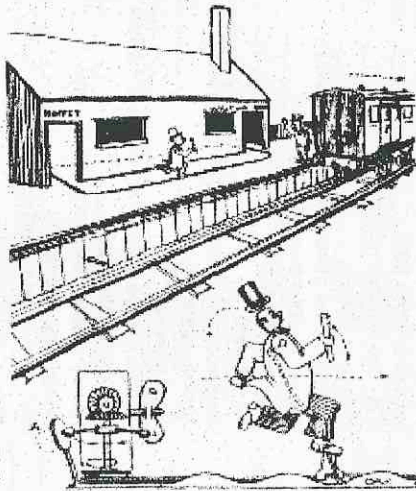
No. 6 THE MISSED TRAIN

A simple but effective portrayal of an everyday occurrence. Brings the last drop of realism to your layout. As train leaves station, portly passenger runs from buffet and chases the train down platform. Fended off by vigilant porter, he is deflected into waiting room.

Complete with building, portly passenger, porter and special high-speed mechanism.

Optional extra: special version for down trains, in which passenger starts from waiting room and ends in buffet.

These light-hearted suggestions are offered in the hope that they may prove useful to modeller and manufacturer.



Bletchley Park Roster – December 1998

Sat Dec 12th Mark Wilson, Ken James Sun Dec 13th Gordon Shrimpton, Chris and Nick Hughes

Have a happy Christmas and good health in the coming year – J.D.

Milton Keynes
Model Railway
Society– 1969

President:
Jim Wood

Vice President:
Les Wood

Chairman:
Dennis Lovett

Vice Chairman:
Fred Collins

Secretary:
Chris Hughes

Treasurer:
Eric Bowman

Committee:
Geoff Bell
Colin Jamieson
Bruce Garwood
Gordon Shrimpton

CMRA Rep:
Chris Lester

Museum Curator:
John Hatton

Librarians:
Ray Cousins
Richard Cousins

Newsletter:
John Dibben

**Published by/
Contact Point:**
Dennis Lovett
Chairman
☎ 01908 376750

Cover Picture:
‘Jinty’ 47327 on a
‘Santa Special’ past
Butterley Reservoir
in 1994.

Keeping up appearances

By the time that you read this, we will be close to having had 10,000 visitors through our doors during 1998. To put this into perspective, it equates to the Saturday attendance at the recent Warley MRC show at the NEC.

Since opening our doors, we have seen a continuous increase in the yearly attendance figures. Last year it was 9,800. As Bletchley Park becomes better known (remember there is a major tv programme due soon and the Robert Harris book Enigma still to be filmed, the rights being owned by Mick Jagger of Rolling Stones fame), we can expect these numbers to be radically improve in the next few years.

Each year we open up more rooms and improve the décor and displays. We must ensure the public rooms are kept clean and tidy and avoid undue mess. It is essential that any mess in these areas is cleared up on the Tuesday before the next open weekend.

When it is raining outside, we are already crowded in the Summer months and I can visualise that we shall need to open up the main clubroom, but how we do this is another matter! A lot depends on finding suitable accommodation for the O gauge layout and members are aware of the work that we have done to lay the foundations for taking over part of the building next door, which is not currently released to the Bletchley Park Trustees. Once it is, then it will be necessary for someone to have the money, enthusiasm and inclination to put it right and I am sure that we will have all three available by then, as most of the other projects will be nearing completion.

In the meantime we are clearing out the main store room in an effort to create yet another visitor attraction in the future. This means tidying out some of the other stores and removing items no longer to the storage yards elsewhere on the site.

We know our efforts are appreciated by the feedback we receive. We must continue to ensure that we have the desire to improve further and that we improve the quality of displays. Small items like labels in display cabinets are one way of achieving a more professional approach. Next time you visit a preserved railway or museum take note of any ideas that we have missed. Best practise can be incorporated into our own efforts.

Keep up the good work for 1999 will be equally as busy and we have achieved so much in a short time. It will be our 30th Anniversary and will give us the window to publicise our activities even more.

Finally, I wish you and your families a Happy and peaceful Christmas and a prosperous new year.

Dennis Lovett
Chairman

Diary



DECEMBER

1998

6

Northampton Swapmeet

JANUARY

1999

24

Woughton Swapmeet

26

AGM 8pm

Club Competition

As usual, the club modelling competition will be run in conjunction with the Annual General Meeting, so now is the time to start finishing off your models.

The classes of competition areas follows:

Scratchbuilt locomotive	7mm or above	T. Wilson Trophy
Kitbuilt or modified ready to run locomotive		
Scratchbuilt rolling stock		Moorcroft Shield
Kitbuilt or modified ready to run rolling stock		
Scratchbuilt locomotive	4mm or less	George Barret Memorial Trophy
Kitbuilt or modified ready to run locomotive		Jim Armstrong Trophy
Scratchbuilt rolling stock		Sylvia Armstrong Trophy
Kitbuilt or modified ready to run rolling stock		
Kitbuilt or modified ready to run locomotive	2mm or less	P & D Marsh Trophy
Scenic Items	Any scale	Rail Trophy

Jobs to be done

The chairman has a list of jobs looking for volunteers to complete them. Some are simple tasks and some have already been completed. Chris, one of our newer members has installed Perspex over the loo windows which has resulted in a dramatic change in temperature, whilst Reg and Bernard have been removing the old heating unit from the large store room.

I would hate anyone to miss out on the excitement – so please volunteer before the Chairman catches you first!!! A list appears elsewhere in this issue..

	Perspex to be fitted over window frames behind existing bars			
Main store room (behind shop)	Tidy and remove rubbish	On-going		
Workshop	Maintain tidyness		Chris	Two completed as at 18/1/1998
	Perspex to be fitted over window frames behind existing bars			
Locked store	Tidy and make more accessible	Long term		
Kitchen	Redecorate			
	Perspex to be fitted over window frames behind existing bars			
Toilet	Door needed ?			
	Perspex to be fitted over window frames behind existing bars	Short term	Chris	Completed
Small store	Needs major tidy, removal of surplus boards by relocating	Mid term	Dennis / John	Completed
	Relocate dexion shelving from large store			
Passageway	Needs tidying up	Short term		
Large store	Needs tidying up - removal of machine. ?			
	Long term use as additional exhibition area			
	Perspex to be fitted over window frames behind existing bars		Reg / Bernard	
	Electrics - installation of sockets / heater			
	Decoration			
Main Club room	Long term use only. Tidy and continue as at present			
	Perspex to be fitted over window frames behind existing bars			
	Emergency door to be mended			
Outdoors	Greenhouse windows to be repaired			
	Greenhouse door to be fitted ?			
	Greenhouse shutters to be fitted to entrance holes to stop wind blowing in leaves / birds / squirrels etc.			
	Shed - old outdoor layout boards - decision to be taken as to future use?			

JOBS TO BE DONE	For details see Club News			
Verney Room	Layout - install Buckingham branch, revise fiddle yard pointwork and complete scenics	Short term		Easter 1999
	Display cabinets - install glass fronts and install models of local interest. Relocate O gauge local models from main lobby case	Short term		Christmas
	Install bracket for Brian's lamp	Short term		Christmas
	Install display of Casseney pictures from Colin Stacey	Short term	Pictures ordered from photographer	Christmas
	Paint screen (stain?)	Short term		
	Perspex to be fitted over window frames behind existing bars			
	Complete scenics to Wilton	Short term		
Mandlebury room	Move N gauge cupboard to allow video console to fit in room better	Short term		November 1998 (after Warley)
	Perspex to be fitted over window frames behind existing bars			
	Install Railwayana (As obtained)			
Main lobby	Install club trophies in cabinet which currently displays O gauge local models			
	Shop sign			
	Modify door to be integral with shop - perspex panel (Black board behind to take manufacturers stickers)			
	Base for 10 1/4 inch gauge track to take			
	Minic locomotive			
	Install spring to door from entrance lobby so it is self shutting			
	Complete door panel	Being done		
	Perspex to be fitted over window frames behind existing bars			
Entrance lobby	Complete scenics to Sherwood			URGENT - Winter approaching

Notice Board

MANDLEBURY AT NEC

Mandlebury our N gauge layout appeared at the Warley Exhibition being held at the NEC during the weekend 8th/9th November. Thanks to Bruce Garwood, Gordon Shrimpton, John Hatton, Dave Andrews, Dave Lean and Dennis Lovett for staffing the layout and providing plenty of trains to run on it.

By the large crowd watching the layout throughout the exhibition, we must of done it well! The show was attended by a record crowd of over 15,000.

CHRISTMAS OPENINGS

The club rooms will be open as usual on Tuesdays 22nd and 29th December. Please note that we shall be closed on Fridays December 25th and January 1st.

SWAPMEET DATES

Northampton - 6th December, Northampton Moat House, Silver Street. 1100 - 1530.

Woughton - 24th January, Woughton Campus. 1100 - 1500. Admission 80p Adult, 40p children/Senior Citizens and £1.60 Family (2 adults and children).

AGM

The 1999 AGM will be held on 26th January at 2000. Please see formal notice for details.

HMRS Meeting

The next HMRS meeting at our clubrooms will be held on February 24th and is on the subject of "GWR coaches and passenger services" and the talk is by D.L. Hyde.

Meetings commence at 1930 prompt.

M&GN 40th Anniversary - Nth. N'folk Rly.

Our honorary member for Norfolk, Gordon Eckersley, has invited MKMRS to take part in the model railway exhibition being held on various parts of the North Norfolk Railway on the first weekend of June 1999. Anyone who is able to offer a layout for transportation is invited to speak to our John Hatton who is co-ordinating the event. Several layout owners have already indicated a willingness to take part. Accommodation will be provided by the NNR and all layouts transported in a large vehicle by Gordon Shrimpton.

Gauge O Guild Auction (Saturday 13th February 1999)

The club has been invited to host this event at Bletchley Park. The auction, in the CAA Hall and will be open to members only. We shall need assistance with stewarding, car parking etc. Although it is a non open weekend, we have agreed to open our premises on that day, so that GOG members can visit our complex. Details from Dennis Lovett.