

WARLEY  
NATIONAL MODEL  
RAILWAY EXHIBITION

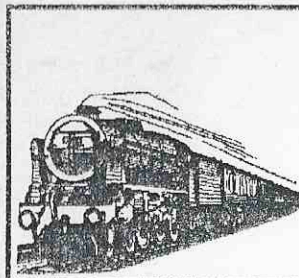
SATURDAY 9th &  
SUNDAY 10th  
OCTOBER 1999

HALL 9,  
NEC BIRMINGHAM

SATURDAY 10 am to 6 pm  
SUNDAY 10 am to 5 pm

Sponsored By:  
Peco, Graham Farish, Bachmann Branch-Line and  
Midland Counties Publications.

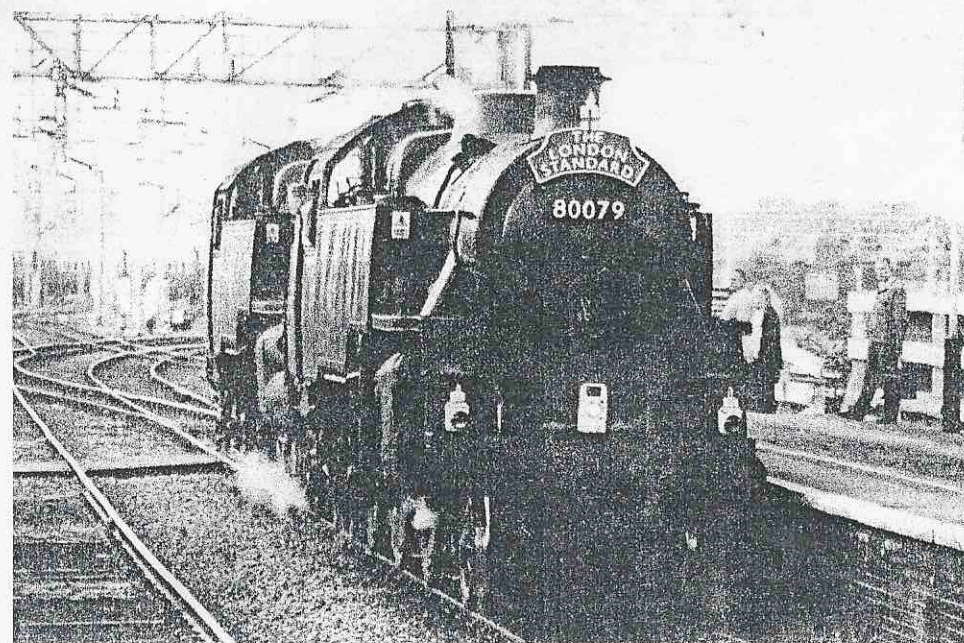
Full details inside



# Milton Keynes Model Railway Society

Newsletter

No. 89 August 1999



The MKMRS is a member of:

- The Chiltern Model Railway Association
- The Model Railway Club
- The World War II Railway Study Group

Working within the Bletchley Park Museum

**Milton Keynes  
Model Railway  
Society- 1969**

**President:**  
Jim Wood

**Vice President:**  
Les Wood

**Chairman:**  
Dennis Lovett

**Vice Chairman:**  
Fred Collins

**Secretary:**  
Chris Hughes

**Treasurer:**  
Eric Bowman

**CMRA Rep:**  
Chris Lester

**Museum Curator:**  
John Hatton

**Editor:**  
John Dibben

**Committee:**  
Geoff Bell  
Colin Jamieson  
Bruce Garwood  
Gordon Shrimpton

**Librarians:**  
Ray Cousins  
Richard Cousins

**Published by/  
Contact Point:**  
Dennis Lovett  
Chairman

**Cover Picture:**  
The pair of BR  
Standard Class 4  
tanks which visited  
Bletchley on 1st  
May, 1999.  
Photo:  
Chris Lester.

**30 not out!**

By the time you read this the MKMRS will be 30 years old. Pardon the cricketing 'pun' but it is still the 'cricket season' as far as I am concerned!

Over the last few months, these pages have been filled with articles concerning this event. It is significant, as not many organisations in the area have lasted this long. However, it is now probably the time to look to the future. The 'railway modelling world' has changed significantly and today's young are distracted by 'technological wizardry'. Railways do not occupy the same the same place in the 'nations' hearts and minds' as was previously the case.

This has been offset by an increase in 'nostalgia' and items associated with our childhood. The Railway Modeller recently carried an advert for a Wrenn 'West Country' pacific at £850! I have decided 'nostalgia' is too expensive!

However, this aspect of our hobby is increasingly popular and gives pleasure to many. The MKMRS reflects this admirably, devoting much effort to layouts and displays on this theme.

The standard of layouts, seen at exhibitions and in the model railway press, has improved tremendously and the MKMRS has also reflected this.

The future of the hobby will probably see a greater 'specialisation' with more emphasis on Conventions dedicated to specific branches or gauges. A trend which has already begun.

It will be a 'challenging' time but I am confident that the MKMRS will meet it.

At a recent committee meeting, it was agreed by most members that 'compromise' was the key. This is very important if you cater for a wide range of activities with only 'finite' space, a limit to that which you could reasonably expect the members to contribute and desire to maintain a 'healthy' bank balance.

I am pleased that with the continued generosity of the Bletchley Park Museum and a little reorganisation, I have been able to save approximately 80% of the cost of producing the newsletter which amounts to well in excess of £100pa. This exceeds the previous 'unwitting sponsorship' of Network South East!

The past is important and should be celebrated but cannot be changed, unlike the future!

*J. Dibben*

John Dibben  
Editor

**BLETCHLEY PARK ROSTER 1999**

**JUNE TO DECEMBER**

Saturday	12-Jun	Chris Symonds	Martin Shenton	Geoff Hammond	RNL WEEKEND	others who 'turn up'
Sunday	13-Jun	Dennis Lovett	Les Wood	Phil Gilbert	MILITARY WEEKEND	
Saturday	19-Jun	Chris Lester	Tim Davey	Nick Hughes	MILITARY WEEKEND	
Sunday	20-Jun	Gordon Shrimpton	Chris Hughes	John Dibben	MILITARY WEEKEND	
Saturday	26-Jun	Tony Winn	Paul Wakley	Steve Ellingham	VINTAGE CAR PICNIC	
Sunday	27-Jun	Dennis Lovett	Ian Smith	Eric Preston	PICNIC/ FIRE ENGINES	
Saturday	10-Jul	Eric Bowman	Ken James	John Dibben	POLISH WEEKEND	
Sunday	11-Jul	Bruce Garwood	Ken Wiggins	John Dibben		
Saturday	24-Jul	Fred Collins	Phil Wood	Tracey Broyd	BATTLE OF BRITAIN	
Sunday	25-Jul	Dennis Lovett	Les Wood	Nick Hughes	BATTLE OF BRITAIN	
Saturday	07-Aug	Geoff Bell	Colin Jamieson	Geoff Hammond	WOMEN'S WEEKEND	
Sunday	08-Aug	Gordon Shrimpton	Chris Hughes	Steve Ellingham	WOMEN'S WEEKEND	
Saturday	21-Aug	Ray Cousins	Richard Cousins	John Dibben	2nd CRAFT FAIR	
Sunday	22-Aug	Gordon Shrimpton	Dennis Lovett	Chris Symonds	2nd CRAFT FAIR	
Saturday	04-Sep	Tim Davey	Mark Wilson	Ian Harrison		
Sunday	05-Sep	Roger Blackburn	Ian Leigh	Martin Shenton		
Saturday	18-Sep	Chris Lester	Les Wood	Gordon Shrimpton		
Sunday	19-Sep	Dennis Lovett	Tony Winn	Brian Barnes		
Saturday	02-Oct	Eric Bowman	Bernard Worden	Steve Ellingham		
Sunday	03-Oct	Chris Hughes	Nick Hughes	John Dibben		
Saturday	09-Oct	Mick Clements	Stan Pennington	Nick Hughes		
Sunday	10-Oct	Ray Cousins	Richard Cousins	Richard Cousins		
Saturday	16-Oct	Eric Preston	Tim Davey	Paul Wakley		
Sunday	17-Oct	Gordon Shrimpton	Chris Hughes	Martin Shenton		
Saturday	30-Oct	Chris Symonds	Ray Cousins	Steve Ellingham		
Sunday	31-Oct	Bruce Garwood	Ken Wiggins	Mark Wilson		
Saturday	13-Nov	Colin Jamieson	Geoff Bell	John Dibben		
Sunday	14-Nov	Phil Gilbert	Chris Lester	John Dibben		
Saturday	27-Nov	Eric Bowman	Tony Winn	John Dibben		
Sunday	28-Nov	Dennis Lovett	Les Wood	Nick Hughes		
Saturday	11-Dec	Bernard Worden	Ken James	John Dibben		
Sunday	12-Dec	Gordon Shrimpton	Chris Hughes	Nick Hughes		

## News

**QGM** – The midsummer QGM was held at the end of July. Dennis gave an update on events and a general summary of the position of the MKMRS as it stood at present.

Chris Hughes gave a brief summary of his activities since the last meeting and Eric reported on the club's finances. Reports on the progress of layouts were given by those responsible. Details appear below.

**30th Anniversary Bar-B-Que** – This will be held on Saturday the 18th September, 1999. It will be held in the evening but exact time and details are unavailable at present.

**'Tea – Money'** – The 20p charge for a cup of tea or coffee and a biscuit (*or two*), remains the same but will now apply to Friday nights as well. The monies obtained from the provision of tea or coffee go into the 'tea-fund' and the level of charge is designed only to 'cover the costs' incurred.

The number of people attending on Friday had increased and tea or coffee is provided free on 'open weekends'. This had caused the tea-fund to run at a deficit.

The committee felt that as Friday, whilst not 'officially' a club night, it has almost become such and is used by members who cannot attend on Tuesdays. It was felt that it would be better to make a charge for Friday nights rather than increase the charge on Tuesdays.

**'Christmas Social Evening'** - It was announced that Tuesday 21st December, 1999 would be a 'social evening' for members with 'festivities' laid on. More details nearer the time.

Finally, **'Mandleburys'** - This layout, pictured below, which has served the club so well, is for sale at £800 o.n.o. This is to provide space and funds for another project. If you know of someone who might be interested, please contact Bruce Garwood.

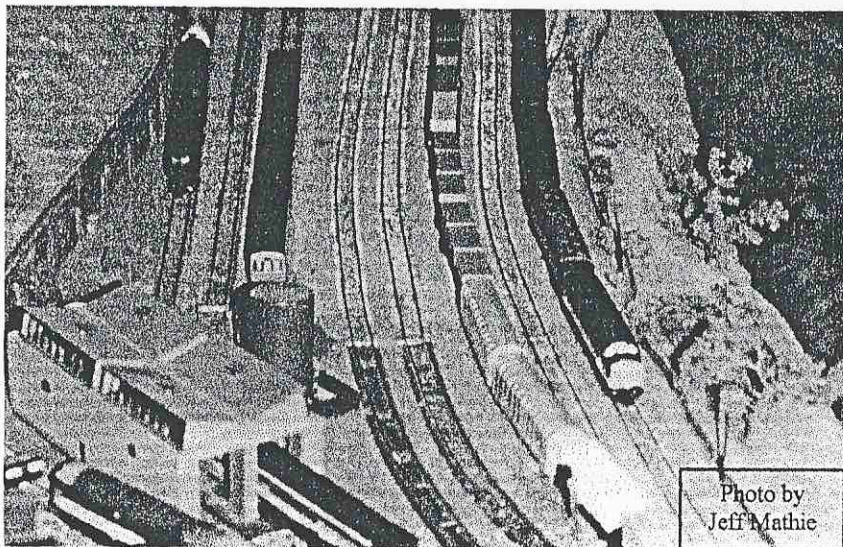


Photo by  
Jeff Mathie

## Museum News

A couple of items were mentioned at the last 'group meeting' which concern the MKMRS.

The first was the lack of information circulated to members concerning the events within the 'Park' on the Polish Weekend, causing some frustration to members on duty in the clubroom. This was a matter which affected other groups and it was noted and arrangements were made to avoid a reoccurrence of the situation. It was no fault of any club member.

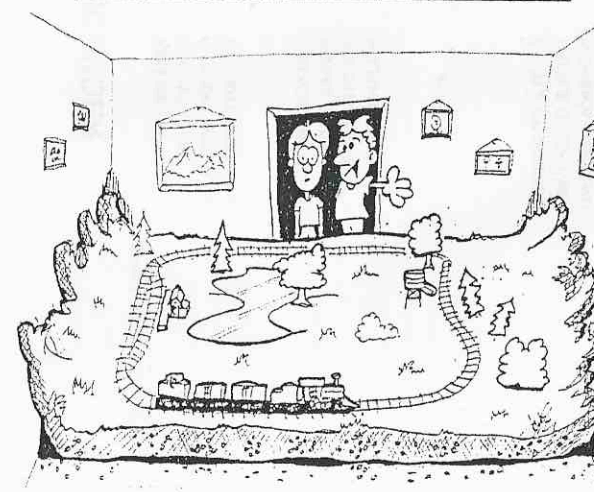
The closure of the 'mansion' over that weekend also caused considerable concern to the Polish visitors but the Park was not responsible for this decision.

The other matter was that of 'manning the gate'. A request went out to all groups for volunteers. In fact a request was also made in the 'Citizen'. This matter has arisen before but Chris Hughes, 'standing in' for Fred Collins at the meeting, expressed the view that members should be made aware of the situation. We are all BP volunteers and members are encouraged to help the 'Park' within the club. If they would also be prepared to volunteer to help on the 'gate', this would be a very positive way of expressing support for an organisation to whom we owe so much.

The 'Trust' is only asking for volunteers to man the 'gate' alongside more experienced staff and only for an hour or two. Some people may not feel comfortable handling money but volunteers are also required to hand out leaflets or to show people where to park.

If you would like to volunteer, please contact Chris, Fred or John or simply wander into the mansion. You will be assured a warm welcome!

Cartoon supplied by Steve and Jacqui Dennison



'It's only temporary – I'll move it back outside in the spring'

### And Finally ...

I hope you like the 'new look' newsletter which is aimed at providing more 'relevant' information. There is a lot happening and no space for an article this month but please keep them coming in! My thanks to all those who have supplied me with information which includes those previously mentioned plus Dennis, Fred and John Hatton – J.D.

**GIANT 1999**

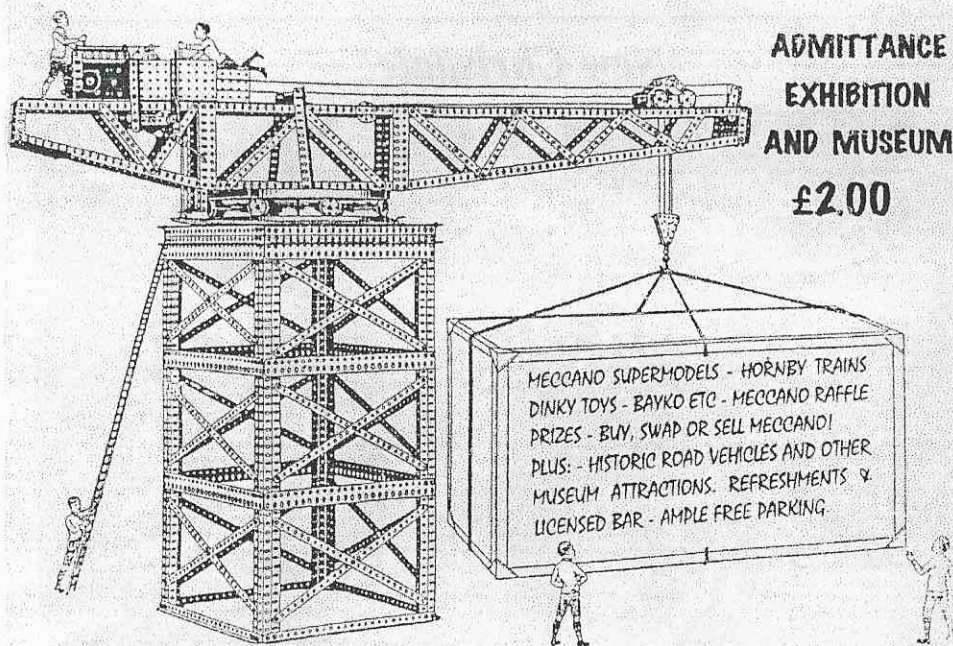
# MECCANO

**AND HORNBY RAILWAYS!**

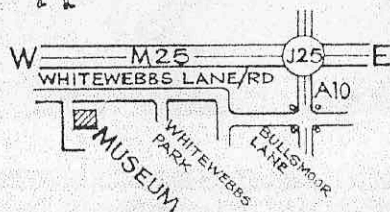
## EXHIBITION

### 11th & 12th SEPTEMBER

SATURDAY & SUNDAY 10am - 5pm



**The  
Whitewebbs  
MUSEUM  
of TRANSPORT**  
WHITEWEBBS ROAD  
ENFIELD MIDDX



ORGANISED BY NORTH EAST  
LONDON MECCANO CLUB  
FURTHER DETAILS FROM  
DAVE TAYLOR 01371 875012

## Notices

### MKMRS Sweatshirts and Polo-shirts

Gordon Shrimpton is still taking orders for MKMRS sweatshirts and polo-shirts at £14.50 and £12.50 respectively. They can be supplied with your name embroidered on them for an extra £3.00

*My apologies for last months error concerning the price of 'personalised' named sweatshirts and polo-shirts. My mistake, do not blame Gordon - J.D.*

### The Historical Model Railway Society

Our links with the HMRS go back many years and their popular talks, half of which are held in our club rooms, will recommence in the Autumn. A list will appear in a future issue.

Eric Bowman, our Treasurer, is our contact and is always happy to answer any enquiries on the subject.

### For Sale

John Tennant's son, Ian, who runs ASK models in St. Mary's Avenue, Bletchley, has decided to cease selling model railway items and to concentrate on sci-fi and military modelling.

He has offered his entire model railway stock to club members who may wish to purchase them for themselves or for someone else. All items are 'very reasonably priced' and compare 'very favourably' with those advertised in the model railway press.

There is a large amount of stock for sale and for space reasons a complete list cannot be published. However, Dennis and I have a full list of items and prices. If you wish to view the items, please contact Dennis, John or myself.

A summary of the goods on offer appears below.

PECO - TRACK, WAGONS and ACCESSORIES - OO and N

WILLS/RATIO KITS - OO

PHEONIX - ACCESSORIES - O

DAPOL KITS - OO

DART CASTINGS

HORNBY ACCESSORIES

GRAHAM FARISH - LOCOS, ROLLING STOCK and BUILDINGS

## Events

**Sunday 22nd August, 1999 – Northampton 2nd Active Fire Station Model Railway Exhibition and Extravaganza** – Mereway Fire Station, A45, just off Jcn 15 M1, Northampton. 10.30 – 1700. Adults £1.50, Senior Citizens 80p, Family £4.00. At least 15 layouts including Bruce Garwood's 'New Chrisdale'. Model boat display. Guest appearance – Jordan F1 Racing Car.

**Sunday 29th August, 1999 – Hoddesdon Model Railway Club Model Boat and Garden Railway Special** – Lee Valley Caravan Park, Essex road, Hoddesdon. 1030 – 1700 Admission 50p.

**Monday 30th August, 1999 – Bourton-on-the-Water Model Railway Exhibition** – Victoria Hall, Bourton-in-the-Water. 1100-1700. Adults £1.25, Senior Citizens 75p, Children 75p (unaccompanied).

**Saturday 5th September, 1999 – Northampton Swapmeet** – The Moat House Hotel, Silver Street, (off Horsemarket). 1100-1530. The final swapmeet of 1999 will be held on December 19th.

**Sunday 26th September, 1999 – Woughton Swapmeet** – Woughton Campus. 1100-1500. Admission 80p Adults, 40p Children/Senior Citizens and £1.60 Family (2 adults and children). The final swapmeet of 1999 will be held on November 14th.

**Saturday 18th October, 1999 – Hoddesdon Railway Circle Model Railway Exhibition** – Broxbourne Civic Hall, High Street, Hoddesdon, Hertfordshire. Adjacent to Police Station. 30+ Exhibits. 18 working layouts. Adults £2.30, children and Senior Citizens £1.00. 1030-1730.

*SEPTEMBER*  
**Saturday/Sunday 18th/19th October, 1999 – Bletchley Park Museum Battle of Britain Weekend.** Flypast by 'Spitfire', Hurricane', 'Lancaster' and 'Dakota'.

**Saturday/Sunday 9th/10th October, 1999 – Bletchley Park Museum 2nd Craft Fair.**

**Saturday/Sunday 9th/10th October, 1999 – Warley Model Railway Exhibition, Birmingham NEC** – see rear cover.

**Saturday 16th October, 1999 – Bedford to Bletchley Rail Users' Association 1999 Rail Day, Bow Brickhill Village Hall.** Details to follow. Mandleburys final outing.

### Bletchley Park Museum – Polish Weekend

Our thanks to Phil Gilbert for arranging a display in the clubroom for the 'Polish Weekend'. It took the theme of Polish Railways and wartime in the form of pictures and captions containing much information with some items of 'memorabilia'.

Fred Collins painted one of his excellent pictures which he had framed and this was presented to the Polish representatives outside the mansion on Sunday afternoon.

## Club Layouts

Tony Winn has commenced work on the rewiring of the Sherwood Layout, (the long 'shelf' layout). When completed it will be possible to operate the layout either by two people, one at each end or by one person at one end. As you can imagine wiring this layout is not a straightforward affair owing to it passing through three rooms. One operator can only see a small proportion of the layout. The installation of Closed-circuit televisions in three locations has made things easier but it is still very awkward to 'keep track' of trains, particularly when the rooms are full of people!

I am sure Tony will do a good job and that with his electronic 'genius' and electric points the layout will be a greater pleasure to operate.

### 'New Chrisdale'

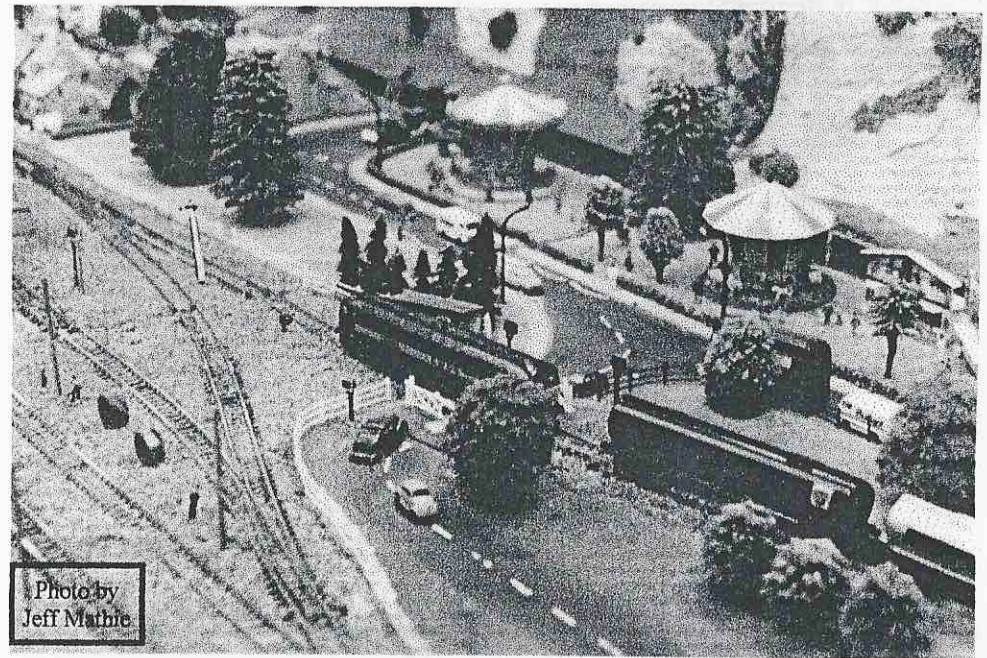


Photo by  
Jeff Mathie

Pictured above is a scene from Bruce Garwood's 'New Chrisdale' layout. Bruce purchased the layout a year ago and it has been on the exhibition circuit for some years, so some members may have seen it before Bruce purchased it.

It is an N gauge 'modern image' layout measuring 12' x 3'. It is highly portable being carried in 3 4' x 3' baseboards. It will have had eight outings this year which has kept Bruce very busy along with his work on Mandleburys. The layouts next outing will be to Northampton on 22nd August as mentioned on the previous page.