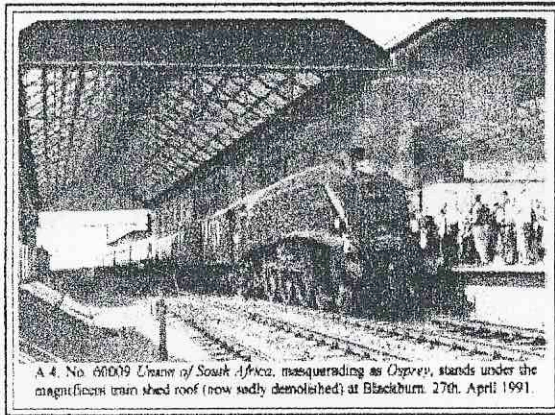


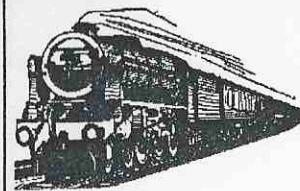
Railway Correspondence and Travel Society



A 4. No. 60019 *Uxarie of South Africa*, masquerading as *Oxprey*, stands under the magnificent train shed roof (now sadly demolished) at Blackburn. 27th. April 1991.

The Railway Correspondence and Travel Society now meets regularly at the C.I.U. Workingmens Club, London Road, Stony Stratford at 7-30 pm on the first Thursday of every month.

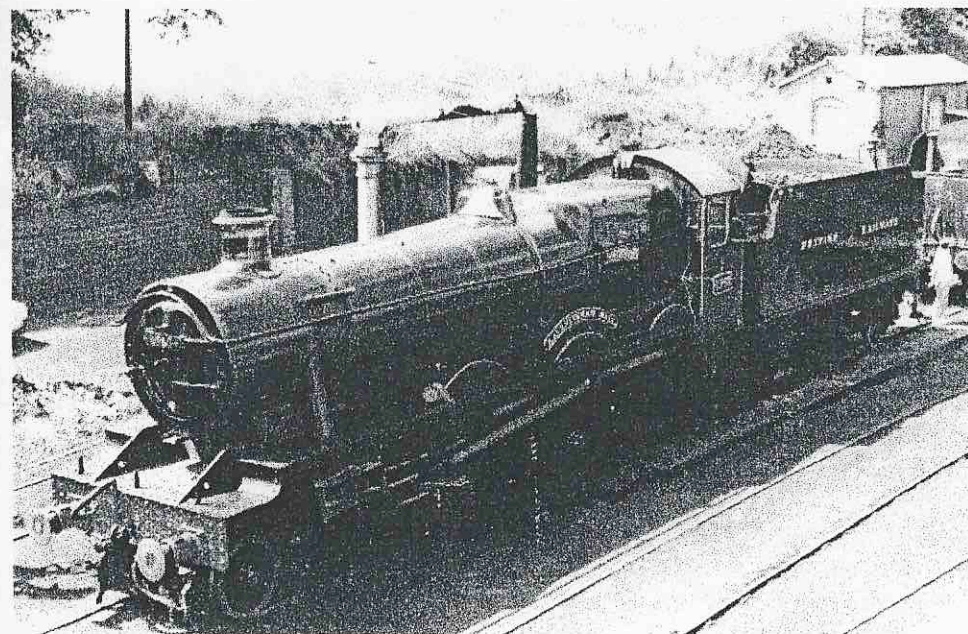
As usual all are welcome. Do come along if you can.



Milton Keynes Model Railway Society

Newsletter

No. 95 February 2000



The MKMRS is associated with:

- The Chiltern Model Railway Association
- The Model Railway Club
- The World War II Railway Study Group

Working within the Bletchley Park Museum

Museum News

A new roster, courtesy of Chris Hughes, appears below. He wishes it to be known that it is desirable that a Committee Member is present at each Opening and that members arrange their own swap if they are unable to do their rostered duty. John Hatton, John Tennant and Ken Ranns are NOT rostered separately as they attend most weekends.

Bletchley Park Roster – February to June 2000

Saturday	4 March	Geoff Bell	Ray Cousins	Richard Cousins	
Sunday	5 March	Chris Lester	Tim Davey	Phil Gilbert	
Saturday	18 March	Colin Jamieson	Paul Wakely	Jeff Mathie	Craft
Sunday	19 March	Chris Hughes	Nick Hughes	Martin Shenton	Fair
Saturday	1 April	Eric Bowman	Eric Preston	Jim Wood	
Sunday	2 April	Gordon Shrimpton	Roger Blackburn	Ian Leigh	
Saturday	15 April	Dennis Lovett	Austin Daly	Ken James	
Sunday	16 April	Fred Collins	Bernard Worden	Phil Wood	
Saturday	29 April	Geoff Bell	Stephen Walker	John Dibben	Womens
Sunday	30 April	Bruce Garwood	Ken Wiggins	Martin Shenton	Weekend
Saturday	13 May	Colin Jamieson	Tony Winn	Jeff Mathie	
Sunday	14 May	Chris Hughes	Nick Hughes	Steve Ellingham	
Saturday	27 May	Chris Lester	Tim Davey	Phil Gilbert	1940's
Sunday	28 May	Les Wood	Mark Wilson	Paul Wakely	Military
Monday	29 May				Weekend
Saturday	10 June	Eric Bowman	Jeff Mathie	Austin Daly	Challenge
Sunday	11 June	Gordon Shrimpton	Dave Ruck	Stephen Walker	Weekend
Saturday	24 June	Dennis Lovett	Ken James	John Dibben	Boat Club
Sunday	25 June	Bruce Garwood	Ken Wiggins	Tony Winn	Enduro

Milton Keynes Model Railway Society– 1969

President:
Jim Wood

Vice President:
Les Wood

Chairman:
Dennis Lovett

Vice Chairman:
Fred Collins

Secretary:
Chris Hughes

Treasurer:
Eric Bowman

CMRA Rep:
Chris Lester

Museum Curator:
John Hatton

Editor:
John Dibben

Committee:
Geoff Bell
Colin Jamieson
Bruce Garwood
Gordon Shrimpton

Librarians:
Ray Cousins
Richard Cousins

**Published by/
Contact Point:**
Dennis Lovett
Chairman

Cover Picture:

GWR 'Hall', 6960

Photo: R. Shenton.

Over and Out!

The MKMRS newsletter has now been published monthly for almost 8 years. Dennis was the editor for over 5 years with myself taking over for the latter part of the time.

In that time the MKMRS has changed in many ways. There is less emphasis on events organised by the club, for example, exhibitions and more emphasis on the museum aspect of the club. The membership has changed with a much more varied range of interests, for example, model railway 'collecting', historical interest and members whose interests centre on the museum aspect.

There are still many fine modellers within the club but its activities have become more diverse.

For some time now I have been concerned that these pages have contained news of which regular members are already aware. The AGM is a good example. The newsletter can be used by committee members to reinforce decisions in 'black and white' but 'hard copy' has not been supplied.

Committee meetings have now become three-monthly making it difficult to reflect the committee's views on a monthly basis. In the past couple of years mini-meetings of increasing length have been held at the 'tea-break'. They inform members of events long before the newsletter reaches them. To interpret the committee line from such meetings is 'risky'!

I know the MKMRS regards as important those members who cannot attend regularly and the many friends of the club. The newsletter is sent every two or three months to 20 to 30 such people but I am aware that by then it is very much 'yesterday's news'.

On a personal note, I have now engaged in voluntary work for the Bletchley Park Trust which I wish to develop and could foresee the possibility of a 'conflict of interest' occurring.

I put these points to committee members with suggestions as to the future of the newsletter some time ago.

I now feel it is time to stand aside and this is my last newsletter, although I am willing to assist any member who wishes to take up the challenge I did. I have received many kind comments and learnt a lot and can recommend the job to anyone who wishes to get more involved with the club and its members.

J. Dibben.

John Dibben
Editor

Notices

Historical Model Railway Society Meeting – Spring 2000

April 26th, 2000 – 'Modelling the London & Birmingham Railway' - Ian Forsyth.

Meetings commence at 1930, are free of charge and MKMRS members are welcome to attend.

Woughton Swapmeet

The dates for next years swapmeets are as follows:

May 14th

September 17th

December 3rd

They will be held at the Woughton Campus from 1100 – 1500. Admission is £1 Adults, 80p Concessions and Children under 18 Free.

Gauge O Guild Auction

The 'Guild Auction' was held at Bletchley Park on Saturday 12th February, 2000. The Gauge O Guild have expressed their thanks to the MKMRS members who assisted with the stewarding duties and opened the clubrooms for their members on the day.

Exhibitions

19th February

Princes Risborough

Princes Risborough & District MRC
Community Centre, Wades Park, Stratton Road,
Princes Risborough.

1000-1700 Adults: £2.00 Smr. Cts./Children: £1.00

19th February

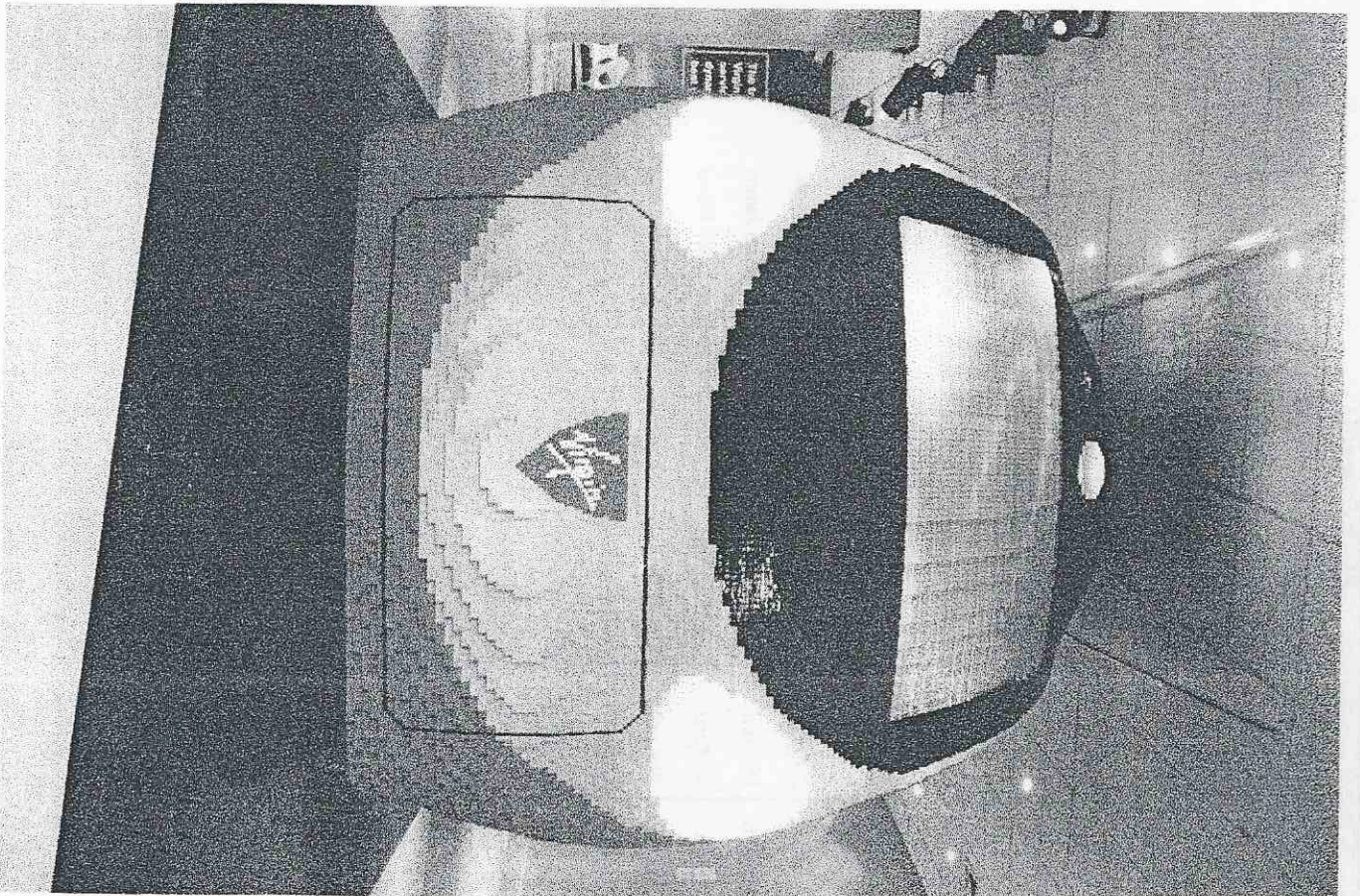
Biggleswade

East Bedfordshire MRS Exhibition
Stratton School, Eagle Farm Road, Biggleswade
1030-1730 Adults: £2.00 Children: £1.00

25th/26th March

Wembley

MRC Centenary Exhibition
Wembley Conference Centre
Saturday 1000-1800
Sunday 1000-1700
Admission: £8.00 (Pre-booking available, £6.00)
40+ Layouts



The Virgin 'tilting train' constructed from 'Lego'. Photo: R. Branson.

School Visits

Many members may be unaware of the work that is put in by Fred Collins, John Hatton and Ken Rams connection with the school visits which take place during the week. These visits are organised between Bletchley Park and Education Authorities and are intended to give a quite intellectually and structured day out for children and sixth-formers alike. They are centred on the 'Cryptology Trail' but the clubrooms form an attraction in themselves.

The visits are for less than an hour but the above are on site for a much longer period, setting things up. The best planned timetables also tend to be difficult to adhere to. It has been said the children are easier to organise than the parties of teachers which also visit Bletchley Park as the teachers tend to wander about more!

Nights on the Tiles!

This is what members can expect since Steve Dennison 'rescued' a large number of carpet floor tiles destined for the tip!

The tiles which are in very good condition will be laid in the large room in the coming months.

This will improve the look of the room immeasurably although there will be a certain amount of disruption while they are being laid.

This along with the almost new looking chairs which Chris Hughes similarly rescued will mean that our own meetings and those of the Historical Model Railway Society which are held in the large room will be able to take place in comfort.

It has been suggested that members will then be able to wear their carpet slippers in the clubroom and that Gordon Shrimpton, our 'fashion guru' might be able to supply MKMRS carpet slippers to add to our ensemble!

MKMRS Sweatshirts and Polo-shirts at Last Years Prices!

Sweatshirts	£14.50
Polo-shirts	£12.50

'Personalised' with names embroidered
£3.00 extra.

Orders to Gordon Shrimpton

Sheringham Exhibition

On the weekend of 17th and 18th June there will be another model railway exhibition on the North Norfolk Railway at Sheringham. A number of members attended last year with layouts and thoroughly enjoyed themselves. The MKMRS will again be involved this year and details will be available nearer the time.

Layout News

Below is a summary of news of the club's layouts with developments over the past few months:

Sherwood (Shelf layout)

The new control panel is in place and Tony Winn busily rewiring the layout, electrifying the points and enabling it to be operated from one or both ends.

Verney Junction

Further restrictions have been imposed on access to the layout and stock that can be run on it for a variety of reasons. The team involved in its renovation have the details.

Penny Stratford

This has now been erected in the place where Mandlebury stood. There is still much work to be done on the layout which was stored for some while.

Tinplate Layout

Stan, Brian and Mick have moved in and are busy tracklaying. It is all looking very professional and the curtains go up next week!

Tramway Layout

The late Don Pigott's Tramway layout is having its track replaced as it was showing signs of wear. It has been replaced in the lobby by a toddlers Tomy Train Set!

Mandlebury

Mandlebury still languishes in the corner of the big room. This layout is the best the club has ever built and deserves a better fate!

The EM Layout which must be considered the club's long term project and the next Club layout is steadily taking shape. The O Gauge Layout is stored. The Outside Layout will probably see more activity now the days are getting longer and the clocks go forward in a month.

AGM

On Tuesday 25th of January, the MKMRS held its Annual General Meeting. It has to be said the 'flu got the better of the Chairman and the Secretary who were present on the night and events did not run as smoothly as they might of wished. This was offset by the lighthearted manner of the members when events did not go according to plan.

On a serious note, as is customary Don Pigott who sadly died in early 1999 was remembered by a minutes silence at the beginning of the meeting.

The meeting continued and business was dealt with in the usual way.

The previous year's accounts were read out, discussed and agreed upon and the budget for next year was formally announced and is as follows:

Fenny Stratford	£50	Verney Junction	£50
EM Layout	£100	Sherwood (shelf layout)	£75
Table Room	£50	Outdoor Layout	£375

It was explained that the N gauge Bletchley layout was regarded as a long-term aim and resources were not available in the short term.

As for the all important decision about subscriptions, the members agreed with the Committee's proposal that they should remain unchanged and are as follows:

18-65	£30	O.A.P.	£20	Affiliated Membership	£17
-------	-----	--------	-----	-----------------------	-----

The Chairman then gave his address before the re-election of the previous years committee. The Vice-President, Les Wood deputised for the President, Jim Wood and gave his address covering the achievements of the MKMRS over the past 30 years. He highlighted the issue of recruitment which has occupied the minds of many members of the past few years and this subject was taken up by members from the floor later in the meeting.

Over 40 members were present which is a large proportion of the club's membership.

Member of the Year

This award, the first of which was given last year is a recognition of a member's services to the MKMRS and includes free membership for a year.

After some deliberation, it was felt by the Committee that both John Tennant and Ernie Johnson should become joint members of the year although both are deserving in their own right.

John Tennant joined the MKMRS back in the early days and has supported the club for many years and since the club's move to Bletchley Park has turned up at almost every open day.

Ernie Johnson is a comparative newcomer but could also be seen in the clubroom at almost every weekend until prevented by illness. He has also contributed much to the renovation of the

Clubrooms. He has also made a great contribution to the scenic side of the Sherwood layout.

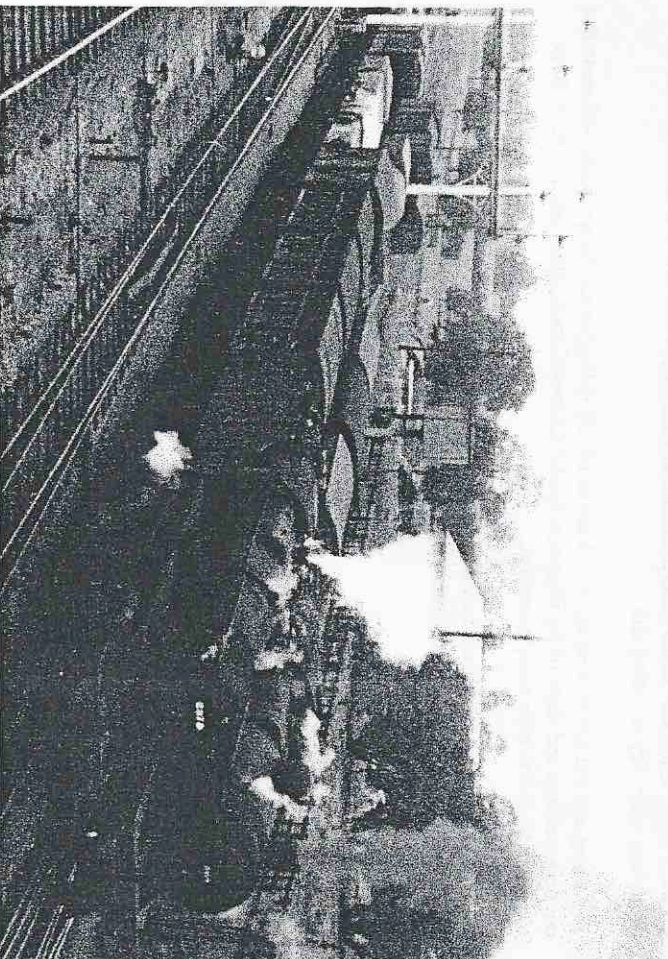
With reference to last months newsletter I would like to make it clear that the large amount of Ernie's stock on the Verney layout was a gift to the club! - J.D.

Club Competition

As is customary, the Club Competition is held on the same night as the AGM. This year Mike Vincent, a great friend of the club, again officiated. The number of entries was down to 13, half that of last year although he emphasised that this did not reflect on the quality of the entries.

At the prize-giving the affects of the 'flu really 'kicked-in' and the results were hopefully as follows:

4mm Scratchbuilt Rolling Stock	Driving Van Trailer (Virgin Livery)	Steve Ellingham
7mm Kibbutil/Modified Locomotive	RES Iveried Class 47 diesel	Mark Agnew
4mm Kibbutil/Modified Locomotive	LNWR Locomotive/Inspection Saloon	Ernie Johnson
7mm Kibbutil/Modified Rolling Stock	Gresley Full Brake	Les Wood
4mm Kibbutil/Modified Rolling Stock	GWR Restaurant Car (Maroon Livery)	Chris Lester
Scenic Item	Handmade Trees	Chris Hughes



LMS 'Crab' 2973 and 'Compound' 364 on freight duties. Photo: R. Shenton