



2016 EXHIBITION SPECIAL

Our 2016 exhibition has maintained the high standards that people come to expect from the annual MKMRS exhibition. This Special Newsletter gives you all an insight into some of the layouts at this year's exhibition.

N Gauge

Dentdale

Wayne Webb

Award-winning (Warley 2015 Best N Gauge layout!) Settle and Carlisle-based layout which runs from the Coal Road Bridge to Blea Moor Tunnel and includes features such as Dent station and sidings, Arten Gill viaduct and St Leonard's Church.



Garsdale Head

Michael Le Marie

Represents the Settle and Carlisle railway in the post-privatisation era. Based on Garsdale station, the mainline has been completely relaid using concrete sleepers and track and Yoredale Railway Preservation Society has relaid the line to Hawes.



Additional Items

During the exhibition Chris Hughes took videos of the layouts on display. He has now edited these videos and placed them on YouTube for others to enjoy.

If you are reading this and have access to the Internet, then clicking on the links below you will be able to view these videos.

Part 1 – N and Z Gauge and 009

<https://www.youtube.com/watch?v=GRcpRqtDJH8>

Part 2 – EM and OO Gauge

<https://www.youtube.com/watch?v=TyYABydIYtl>

Part 3 – OO and HO Gauge

<https://www.youtube.com/watch?v=x3IjCd6yUE>

Part 4 – O Gauge

<https://www.youtube.com/watch?v=6KTEQuccnOY> .

Thanks to Chris Hughes for these super videos.

Ride-on railway

A chance to ride on a real railway, courtesy of our friends and near neighbours at Milton Keynes Model Engineering Society. Sit tight as your train glides along the gallery corridor!



View of the Hall 1 shows just how busy it was from the start.



All of the photographs for this special edition newsletter were kindly taken by Adrian Court for the club.

Webber Heights

Gareth Homersley

Freelance layout constructed in 2mm/ft scale and built with KATO, UNITRACK and KATO UNITRAM. The layout is continuous and features four running lines plus two running tram tracks and a four platform station. An airport diorama has also been constructed on a separate board.

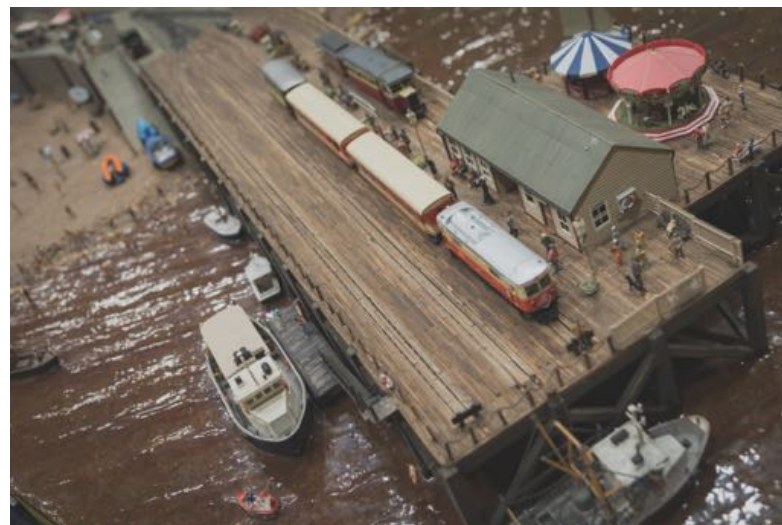


009 Scale

Avyn-a-Llyn

Andrew Bailey, Alison Bailey

The layout has Welsh origins hence the name, although you will realise the name isn't Welsh if you say it the English way! Avyn-a-llyn has won numerous trophies and since 2012 has been undergoing a gradual refurbishment to keep it looking fresh.



Other Scales

Brickville Town Harbour

Martin Shenton

Lego layout featuring harbour, beach and train ferry!



G Scale

Hampton End

Dale Gillard

A small branch line link serving a small village (HAMPTON END). Most of the freight that used the line was fish from the quayside. Following closure, a group of local rail enthusiasts have reinstalled the tracks & buildings and purchased a few foreign engines & stock...



HO Gauge

Auerbach Yard

Graham Sturman

Auerbach Yard is a fictional urban switching yard on the Gulf, Mobile & Ohio RR, “somewhere in Illinois”, set in the early 1970’s prior to GM&O’s merger with Illinois Central RR in 1972.



Salz ÖBB

Michael Watts www.austrianrailwaygroup.co.uk

Salz ÖBB is at 800m, 10km south from Salzburg. The line was built for timber & stone freight between Weißbach and Mitterau. Tourist trains with bicycle wagons now predominate, and preserved heritage trains provide added attraction.



Willowbrook Marsh

Nigel Adams

Small goods depot and maltings complex, situated on the borders of the Midland and Eastern regions of British Railways just to the north of Peterborough during the mid 1950-60's. The location is typical of fenland scenery with plenty of space and traditional buildings for the area. Traffic consists of unfitted and fitted goods workings plus special consists for the local maltings.



Medborough

Roger Tozer

Depicts the Great Central Railway during the transition from steam to diesel. Based upon Brackley station, the layout features award winning scenic dioramas.



OO Gauge

Bradfield Gloucester Square

Robert Longman

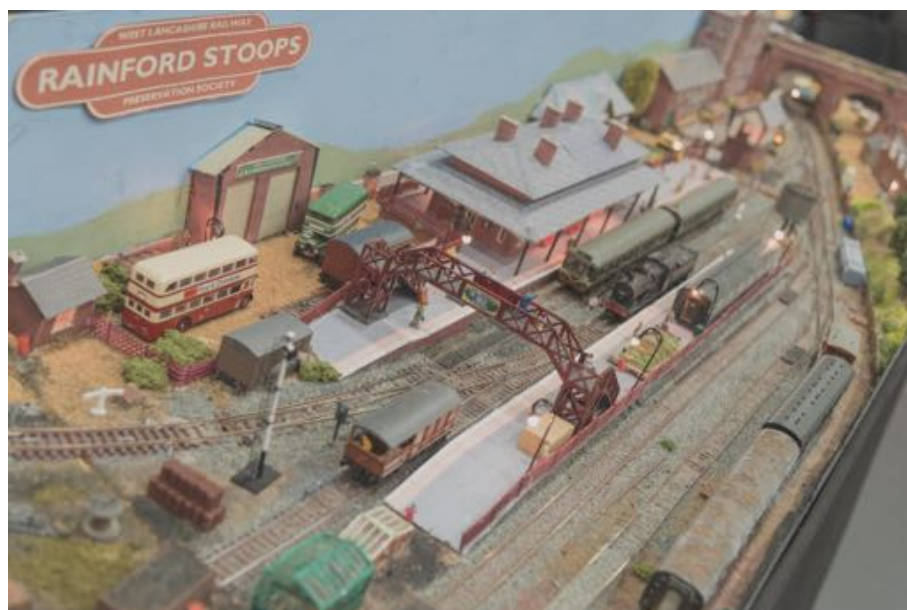
Terminus to fiddle yard layout based on Bradford Foster Square, reflecting its architectural style and the atmosphere of a jaded West Riding mainline terminus in the 1950/60s.



Rainford Stoops

Trevor Powell

Rainford Stoops is the HQ of the fictional heritage West Lancashire Railway. The station layout at Rainford Stoops is loosely based on the main operational area at Tenterden on the Kent & East Sussex Railway, where the modeller was a guard during the nineties.



Thomas at Silverfox Island

Gareth Homersley

A DCC layout built for children to operate. A double track loop passing through scenery – come and try your driving skills using DCC operation.



O Gauge

Eastbridge

Les Pace

Imaginary small London Midland Railway terminus which would have been found somewhere in the West Midlands during the late 1940s (just prior to nationalisation). Locos are brass kits and stock is mainly Parkside Dundas and Slaters with some brass kit goods wagons.



EM Gauge

Milton Quays

MKMRS

Quayside, set on the Southern Region of British Railways in the late 1950s. Location based on ex-LSWR between Southampton and Weymouth.



Towcester

John Norton, George Woodstock

The year is 1977 and Towcester still has a railway presence although on a reduced scale. The remaining line carries passenger services between Northampton, Banbury and Oxford although the intermediate stations have long closed.



Wandlebury Road

Dan Deathe

Modern day diesel depot with a variety of diesel freight and passenger locomotives.



Whitehall

Roger White, Don Hall

Typical large example of the 'perfect tabletop' railway as advertised by Meccano Ltd in the 40s and 50s for the Hornby Dublo three rail system. Features locos and rolling stock with accessories.



Winters Lane

Richard Timms

A small fictitious motive power depot set 'somewhere' in the North of England. Squeezed into a small patch of ground between housing and industry, it is a compact and for the time, relatively modern facility with mechanical ash plant, large coaler and a medium sized shed.

