



Issue 195

Summer 2018

CHAIRMAN'S NEWS

As you read these notes I hope to be part way through a Grand Tour of Europe by train. We are scheduled to travel from Berlin to Budapest on the Hungaria, one of the oldest express services still in operation, having begun in May 1960. It is made up of eight 1st class carriages of MAV (Hungarian) stock and one 2nd class provided by DB. Usually a DB class 101 electric loco takes the train from Berlin to Dresden where a Czech loco takes over as far as Prague. Here a Slovakian loco takes over for the final stretch through Slovakia and on to Budapest Keleti station in Hungary.

We leave Budapest on another Eurocity service through Vienna to Graz where we take in a couple of the Austrian narrow gauge lines, before travelling on the 'Transalpin' Eurocity service through Lichtenstein to Basel in Switzerland. The final leg back to Köln is aboard the 'Rätia' Eurocity service along the Rhein Gorge, passing the famous Lorelei Rock.

In the Spring edition of these notes I was looking forward to attending the Trier steam festival in Germany, and the chance

to ride behind several steam locos. As German heritage carriages have large drop down windows it was a case of on with the protective goggles and hanging out for mile after mile getting covered in smuts. We enjoyed sustained 75mph running on a run out to Saarbrücken and back behind 01 202, a 2-cylinder Pacific class built in 1936 by Henschel & Son. Although the loco is capable of 130km/hr (81mph) with its 2m diameter driving wheels, the coaching stock used is only rated at 120km/hr (75mph) but it was nevertheless an impressive performance. The following day we made the same trip behind 03 1010, a slightly less powerful pacific which still gave a memorable run.



What's going on here???

** *answer later in this edition*

Chris Hughes

Chairman

FENNY STRATFORD

Part 4 By Peter Ellis

As the winter months approached we took the decision to ballast the trackwork. We used a dark grey granite N gauge ballast from Natural Scenics Ltd. When it arrived, we were extremely pleased with the colour and size. We carefully applied it and the result was exactly what we wanted. However, once we started to fix the ballast using the normal method to our horror the grey ballast turned black, not at all what we expected. We left it sometime to see if the colour would change when it had dried. Unfortunately, it did not do so, we decided to put aside working on the layout in the garage until Spring arrived. Given the weather we had it was a good decision.

Over this period all our efforts were directed to constructing the key buildings for the layout. Dave elected to carry out the mammoth task of modelling the station building, with all its fine timbering.



We took the decision to 3D print the side walk supports and the bargeboards as these are extremely detailed to model by hand. The printing was a huge success and we would use it again if required. The

stationmaster's wife is to be found pegging out the washing in the courtyard.



I had the relatively simple task of building the signal box, complete with interior fittings and the 'bobby'. This was followed by the construction of the gatekeeper's cottage and a section of the old police station. There are knotted sheets leading from an upstairs open window of the police station. The custody sergeant will have some explaining to do in the morning in front of the local magistrate.



Dave has commenced the construction of the Rowland buildings which will include a saw mill visible through open doors. We would have liked to include a facsimile of Bruce as a young lad gazing out of the office window, unfortunately we could not find a model that represented his proud features! The final painting of the building is still to be completed.



Also included in the Rowland's scene is a goliath crane and a large timber building used as a drying shed. The pictures below show these at the work in progress stage.



The buildings have been constructed from 1mm thick Plastikard covered with Slaters embossed brick, timber and slate sheets. Windows are from the Will's range or constructed from plastic strip as appropriate. The buildings are painted in acrylic and we have tried to reflect the general tones and hues of the various building materials.

Within the goods yard area we have also used a number of Will's kits (some modified to suit) to meet the layout of the buildings as defined in the 1950's.

All the main buildings will have lighting and here warm white LED ribbon has been cut into sections to light specific rooms.

There are buildings yet to be completed, such as the Rowland owner's house, various yard buildings and the canal cottages. These will be the subject of a future report.

The Trier Dampfspektakel 2018

By Chris Hughes

Every few years in Germany the regional transport authorities have put on a weekend of special trains hauled by steam locomotives. The last one based around Trier was ten years ago, and in 2014 there was a Plandampf at Neustadt. Until this year these special trains mirrored timetabled services so anyone with a valid ticket could choose which service to use, making for some very crowded trains. This year the event was based on Trier again, however to avoid overcrowding, it was necessary to purchase special tickets, either for specific trains or a full weekend ticket costing 199 Euro.

Seven steam locos were rostered, the oldest being an ex-Prussian 4-6-4 Baltic tank, built in 1923. There were three Pacifics, and four Kriegslok 2-10-0's a German V200 (Warship) diesel and 2 heritage electrics putting in an appearance. We were on an organised tour and travelled from Köln to Trier on a special train hauled by the V200, and a Pacific with the Baltic tank tacked on at the rear.



V200 & 01.1 en route to Trier



V200 & BR 1.1 H0 scale

The V200 Class were built in 1956 and were the basis of the British Warship Class



E103 electric loco with TEE stock



E103 with TEE stock H0 scale

The E103 Class were the main motive power for express trains from 1970 until 2003



BR78 ex-Prussian Baltic Tank awaits departure from Speicher on the Eiffel Route

The 4-6-4 Baltic wheel arrangement was not very common in the UK but led to some fairly large tank locomotives. Fleischmann used to make a model of this class but it has been out of the catalogue for several years.



BR 52 Kriegslok 2-10-0 waits at Wittlich



BR 52 Kriegslok 2-10-0 in H0 scale

Over 6700 Kriegslok (War Locomotives) were made during the war by over a dozen different manufacturers, including Skoda. They were a simplified version of the similar looking Class BR 50, using less material and requiring less maintenance, thus saving on manpower during the War. After the War many of them ended up in Russia, but Poland, Romania, Bulgaria, Norway, Yugoslavia and Turkey all had stocks of the class. With so many built it is not surprising that there are over 120 still in existence in Germany alone. I have seen 70 of them, including working examples in Holland and Norway. They were the only class of loco permitted to run the same speed (50mph) backwards as forward. Other distinctive characteristics were the semi-circular tender tank, and (usually) solid front bogie wheels.

The other locos in use were all German Pacifics, even though one is now based in Switzerland and another in the Netherlands.



3-Cylinder Pacific, 01 1075 with 5-axle tender. Originally oil-fired but rebuilt and converted to coal firing in 1996 now preserved in the Netherlands. The H0 model an oil-fired example



Two shots of 01 202 at Saarbrücken after its sustained 75mph running. The loco is now based in Switzerland after a forty year restoration.



The final Pacific was the 3-cylinder BR03 03 1010 posing at Saarbrücken and in H0 scale on the Club layout

*** the men in the field were lined up to photograph and film a train at a preserved line*

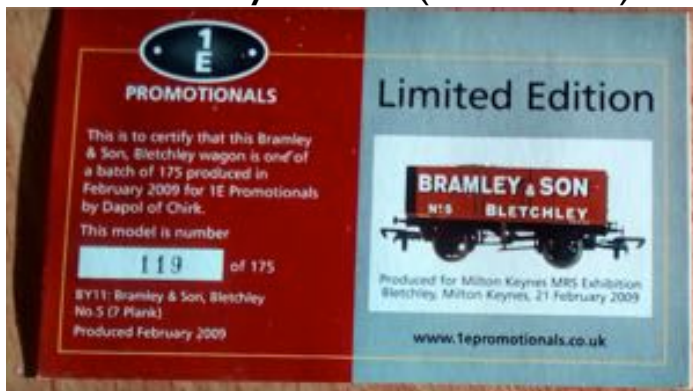
For Sale

The following items are available from David Wills, the descriptions he has provided are –

- IE coal wagons (Dennis Lovett) that were produced for your club
- 2008 Sharpe of Bletchley (4 in stock)



- 2009 Bramley & Son (7 in stock)



- Bletchley Rail Users this is a van
- IE coal wagons for the counties of Bedfordshire, Buckinghamshire, Oxfordshire and Hertfordshire

These are offered at a price of £8.75 each with the postage according on how many are ordered.

If you are interested please contact David Wills directly on 07803 229235 or email davidwills@hotmail.co.uk.

Forthcoming Events

Date	Event
02 June 2018	Nene Valley Model Railway Show. Nene Valley Railway Ltd, Wansford Station, Sibbington Peterborough, Cambridgeshire PE8 6LR. Saturday 9:30 to 17:00 and Sunday 9:00 to 17:00. Adults £5, Concessions £3 and Children £3.
09 June 2018	Trains at Trinity 2018. Trinity Methodist Church, Shortmead Street, Biggleswade, Bedfordshire. 10:30 to 16:00. Adults £4 and Concessions £3.
15 June 2018	Great Central Railway - Model Event. Quorn & Woodhouse Station, Woodhouse Road, Quorn, Leicestershire. Friday and Saturday 10:00 to 17:00, Sunday 10:00 to 16:00. Adults £20, Concessions £20 and Children £9.
19 June 2018	Committee Meeting
30 June 2018	Market Harborough Model Railway Group - Open Day. Christchurch, Clarendon Park Road, Leicester. 10:00 to 16:00.
07 July 2018	Beaconsfield & District MRC - Beaconsfield Model Railway Exhibition. The Beaconsfield School, Wattledon Road, Beaconsfield, Buckinghamshire. 10:30 to 17:00 Adults £5 children £2.50
07 July 2018	Risborough and District Model Railway Club - Festirail Model Railway Exhibition. Community Centre, Wades Park, Stratton Road, Princess Risborough. 11:00 to 16:00
17 July 2018	Committee Meeting
28 July 2018	Northampton & District Model Railway Club _ Open Day. Hardingstone Village Hall, High Street, Hardingstone, Northamptonshire NN4 6DA. 10:00 to 16:00 Adults £2

Date	Event
04 August 2018	Train Collections Society - Model Rail and Toy Train Exhibition. Stoke Mandeville Stadium, Guttman Road, Aylesbury. 10:30 to 17:00 Adults £5.
05 August 2018	Leighton Buzzard Narrow Gauge Railway - The EngineShed Model Railway Show. Pages Park Station, Billington Road, Leighton Buzzard. 10:30 to 16:30. Entry is FREE with a valid ticket for a train ride (£10.50 for adult return, £6.50 for children aged 2-17), or £5.00 adults and £3.00 for children for entry to the exhibition only.
11 August 2018	Silverfox MRC - 2018 Model Railway Exhibition. Oakgrove Secondary School, Venturer Gate, Middleton, Brickhill Street, Milton Keynes. 10:00 to 16:00. Adults £6 and Children £2.
18 August 2018	Northampton & District Model Railway Club - Annual Exhibition. Cogenhoe Village Hall, York Avenue, Cogenhoe, Northamptonshire. 10:00 to 16:00. Adults £3, Children £2 and Family £8.

Ceynix - Scale Model Railway Trees



30% discount on all trees for MKMRS members, email or at shows just produce your membership card when you see me at an exhibition.

Phone Number
Email
Website

Contact Details

020 8864 6596

jacqui@railwaytrees.co.uk

www.railwaytrees.co.uk

Member Updates

Please join us in welcoming the following new members to the club. If you see them in the clubroom please introduce yourself.



Christopher Billingham



The MKMRS Quarterly Newsletter will only survive with your help, we need you to provide articles -

- ❖ These can be write-ups on exhibitions you have attended, modeling titbits, or anything that you think other members would find interesting.
- ❖ If you would like to be included in our “Meet the Members” articles in a future Newsletter, please send in your notes for inclusion.
- ❖ The articles need to be sent in by email to Newsletter@MKMRS.org.uk they need to be the words that you want to appear, include any pictures that you want in the article. All can be sent to the above email address for inclusion.
- ❖ Hoping for lots of copy for the newsletter.

Deadline for articles for the Autumn Edition is the 24th August 2018 with the Newsletter being published by the 31st August 2018.